

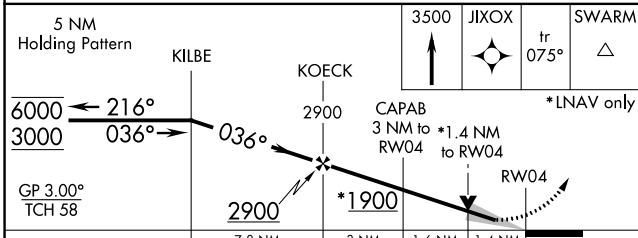
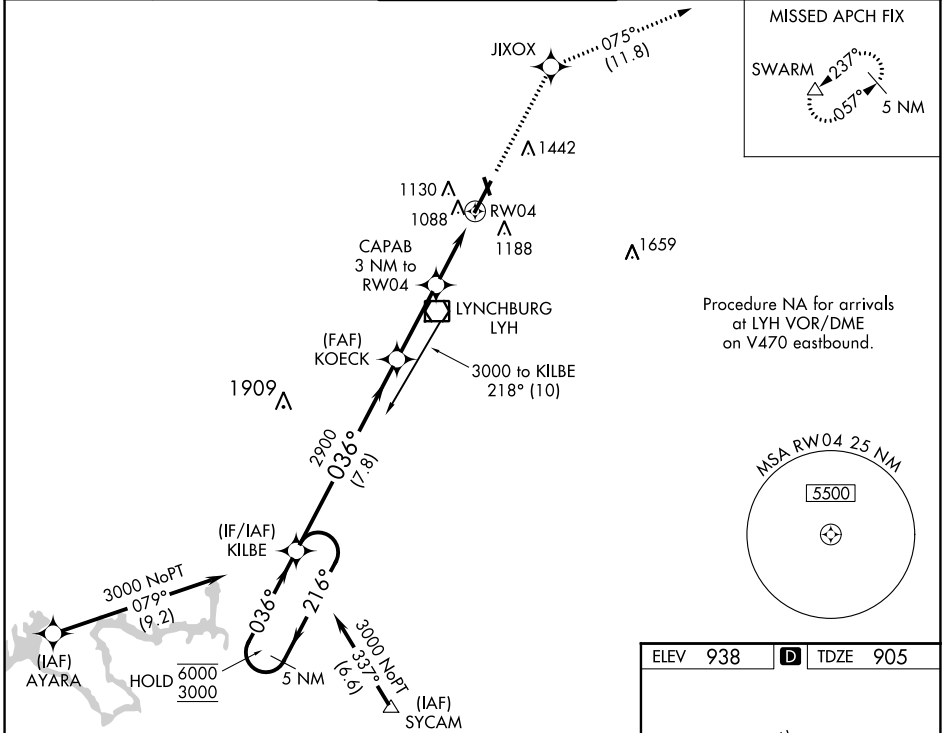
WAAS CH 58205	APP CRS 036°	Rwy Idg TDZE Apt Elev	6800 905 938
-------------------------	------------------------	-----------------------------	---

RNAV (GPS) RWY 4

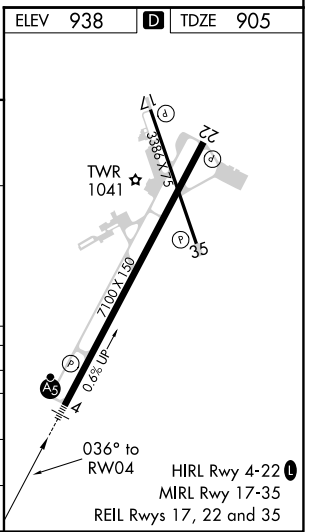
LYNCHBURG RGNL/PRESTON GLENN FLD (LYH)

RNP APCH.	MALSRL	MISSED APPROACH: Climb to 3500 direct JIXOX and track 075° to SWARM and hold.
<p>▼ For uncompensated Baro-VNAV systems, LNAV/VNAV NA below -16°C or above 47°C. For inop ALS, increase LNAV Cat A and B visibility to RVR 5000.</p> <p>▲ Circling Rwy 17 NA at night.</p>		

ATIS 119.8	ROANOKE APP CON 135.0 254.325	LYNCHBURG TOWER ★ 127.65 (CTAF) 0 257.8	GND CON 121.9	UNICOM 122.95
----------------------	---	---	-------------------------	-------------------------



CATEGORY		A	B	C	D
LPV	DA	1175/40		270 (300-¾)	
LNAV/VNAV	DA	1394/60		489 (500-1¼)	
LNAV MDA		1400/40	495 (500-¾)	1400/50	495 (500-1)
CIRCLING		1660-1	1780-1¼	1800-2½	1800-2¾
		722 (800-1)	842 (900-1¼)	862 (900-2½)	862 (900-2¾)



NE-3, 03 NOV 2022 to 01 DEC 2022

NE-3, 03 NOV 2022 to 01 DEC 2022