

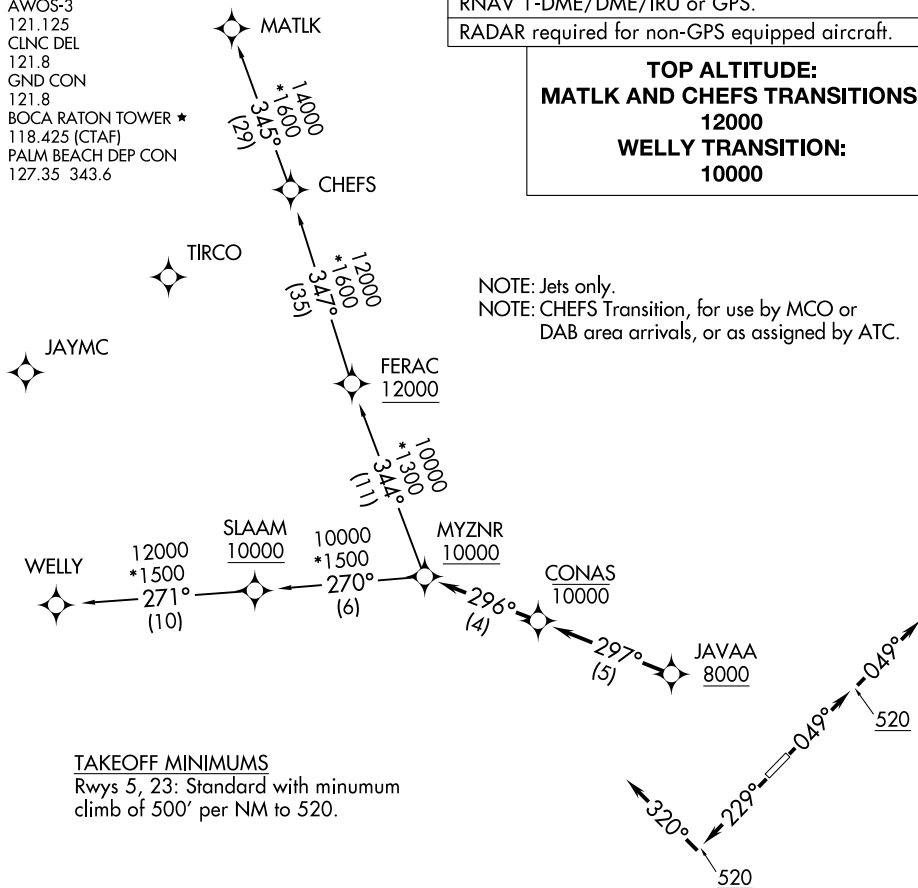
## MYZNR TWO DEPARTURE (RNAV)

AWOS-3  
121.125  
CLNC DEL  
121.8  
GND CON  
121.8  
BOCA RATON TOWER ★  
118.425 (CTAF)  
PALM BEACH DEP CON  
127.35 343.6

RNAV 1-DME/DME/IRU or GPS.

RADAR required for non-GPS equipped aircraft.

**TOP ALTITUDE:**  
**MATLK AND CHEFS TRANSITIONS:**  
12000  
**WELLY TRANSITION:**  
10000



NOTE: Chart not to scale.

## DEPARTURE ROUTE DESCRIPTION

**TAKEOFF RUNWAY 5:** Climb on heading 049° to 520, then on heading 049° or as assigned by ATC, for vectors to cross JAVAA at or above 8000, thence. . .

**TAKEOFF RUNWAY 23:** Climb on heading 229° to 520, then on heading 320° or as assigned by ATC, for vectors to cross JAVAA at or above 8000, thence. . .

...on track 297° to cross CONAS at or below 10000, then on track 296° to cross MYZNR at or above 10000. Maintain ATC assigned altitude, expect clearance to filed altitude within 10 minutes after departure.

CHEFS TRANSITION (MYZNR2.CHEFS)

MATLK TRANSITION (MYZNR2.MATLK)

## WELLY TRANSITION (MYZNR2.WELLY)

MYZNR TWO DEPARTURE (RNAV)  
(MYZNR2.MYZNR) 19MAY22

BOCA RATON, FLORIDA  
BOCA RATON (BCT)

SE-3, 03 NOV 2022 to 01 DEC 2022