

WAAS CH 77813 W32A	APP CRS 321°	Rwy Idg 6513 TDZE 712 Apt Elev 721
--	------------------------	---

RNAV (GPS) RWY 32

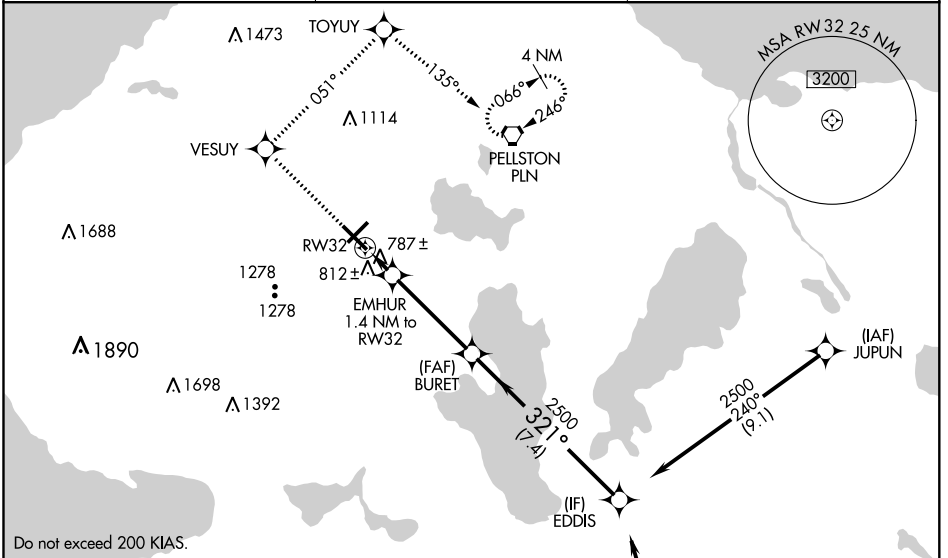
PELLSTON RGNL/EMMET COUNTY (PLN)

⚠ Baro-VNAV NA when using Harbor Springs altimeter setting. For uncompensated Baro-VNAV systems, LNAV/VNAV NA below -16°C (4°F) or above 47°C (116°F). DME/DME RNP-0.3 NA. When local altimeter setting not received, use Harbor Springs altimeter setting and increase LPV DA to 942 feet, LNAV/VNAV DA to 1086 feet, and all MDA 40 feet. Circling Rwy 5, 14, 23 NA at night. For inop MALSRS when using Harbor Springs altimeter setting, increase LNAV visibility Cats C/D to 1 ½ mile.

MALSRS

MISSED APPROACH: Climb to 2600 direct VESUY and via track 051° to TOYUY and via track 135° to PLN VORTAC and hold.

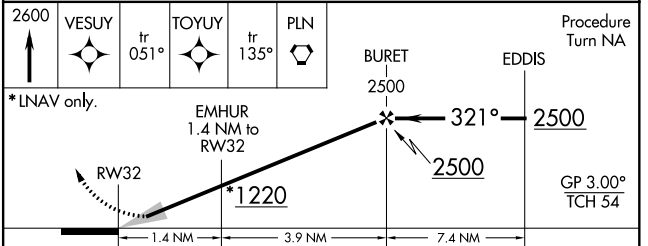
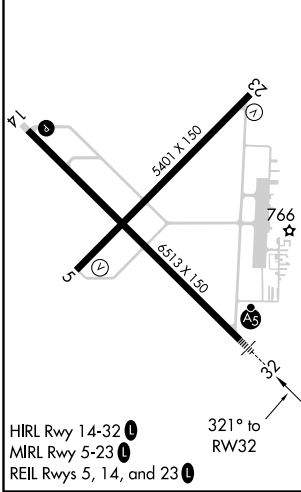
ASOS 119.025	MINNEAPOLIS CENTER 134.6 354.05	UNICOM 123.0 (CTAF) 0
------------------------	---	---------------------------------



ELEV 721	D	TDZE 712
----------	----------	----------

Procedure NA for arrivals at RONDO via V609 southbound.

2600	VESUY	tr 051°	TOYUY	tr 135°	PLN	Procedure Turn NA
------	-------	---------	-------	---------	-----	-------------------



CATEGORY	A	B	C	D
LPV DA		912-½	200 (200-½)	
LNAV/VNAV DA		1056-⅝	344 (400-⅝)	
LNAV MDA	1080-½	368 (400-½)	1080-⅝	368 (400-⅝)
CIRCLING	1280-1 559 (600-1)	1320-1 599 (600-1)	1560-2½ 839 (900-2½)	1660-3 939 (1000-3)

EC-1, 03 NOV 2022 to 01 DEC 2022

EC-1, 03 NOV 2022 to 01 DEC 2022