

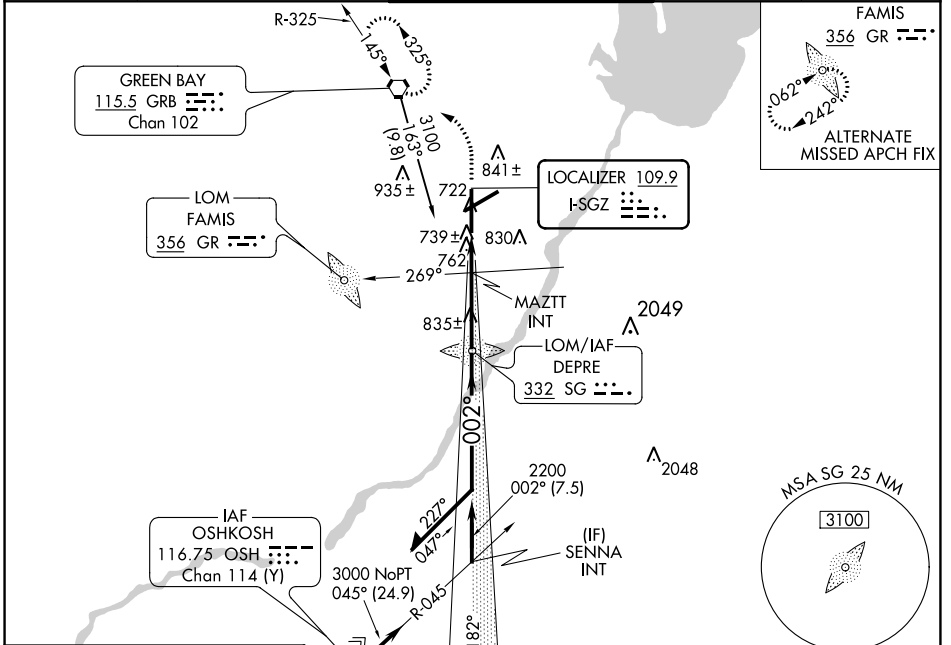
LOC I-SGZ <b>109.9</b>	APP CRS <b>002°</b>	Rwy Idg <b>8201</b>
		TDZE <b>684</b>
		Apt Elev <b>695</b>

# ILS or LOC RWY 36

GREEN BAY/AUSTIN STRAUBEL INTL (GRB)

<p><b>NA</b> For inop ALS, increase S-LOC 36 Cats C/D visibility to 1<math>\frac{1}{8}</math> SM.  <b>ASR</b> **RVR 1800 authorized with the use of FD or AP or HUD to DA.</p>	<p><b>MALSR</b></p>	<p><b>MISSED APPROACH:</b> Climb to 1400 then climbing left turn to 2500 direct GRB VORTAC and hold.</p>
--	---------------------	--

ATIS <b>124.1</b>	GREEN BAY APP CON * <b>119.4 338.2</b>	GREEN BAY TOWER * <b>118.7 (CTAF) 257.8</b>	GND CON <b>121.9</b>	CLNC DEL <b>121.75</b>
----------------------	---	--	-------------------------	---------------------------



ELEV 695 TDZE 684

REIL Rwy 18  
HIRL Rwys 6-24 and 18-36

Diagram showing the runway layout with Tower (TWR) at 796 ft. The runway is 8700 x 150 ft. The FAF is 4.3 NM from the runway.

Knots	60	90	120	150	180
Min:Sec	4:18	2:52	2:09	1:43	1:26

1400	2500	GRB	SG LOM	3100	Remain within 10 NM
*LOC only		MAZTT INT	2116	182°	2700
*1200		2200	002°	GS 3.00° TCH 50	
1.5 NM		2.8 NM			
CATEGORY	A	B	C	D	
S-ILS 36	**884/24				200 (200- $\frac{1}{2}$ )
S-LOC 36	1200/24	516 (600- $\frac{1}{2}$ )	1200/55	516 (600-1)	
<b>C</b> CIRCLING	1200-1	505 (600-1)	1300-1 $\frac{3}{4}$ 605 (700-1 $\frac{3}{4}$ )	1300-2 605 (700-2)	
MAZTT FIX MINIMUMS					
S-LOC 36	1020/24	336 (400- $\frac{1}{2}$ )	1020/26	336 (400- $\frac{1}{2}$ )	
<b>C</b> CIRCLING	1200-1	505 (600-1)	1200-1 $\frac{1}{2}$ 505 (600- $\frac{1}{2}$ )	1260-2 565 (600-2)	

EC-3, 03 NOV 2022 to 01 DEC 2022

EC-3, 03 NOV 2022 to 01 DEC 2022