

WAAS CH <b>65900</b> <b>W04A</b>	APP CRS <b>044°</b>	Rwy Idg TDZE Apt Elev	<b>5200</b> <b>83</b> <b>83</b>
--	------------------------	-----------------------------	---------------------------------------

# RNAV (GPS) RWY 4

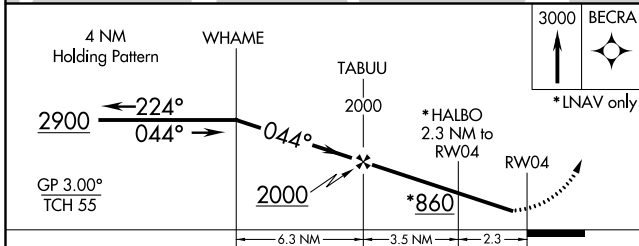
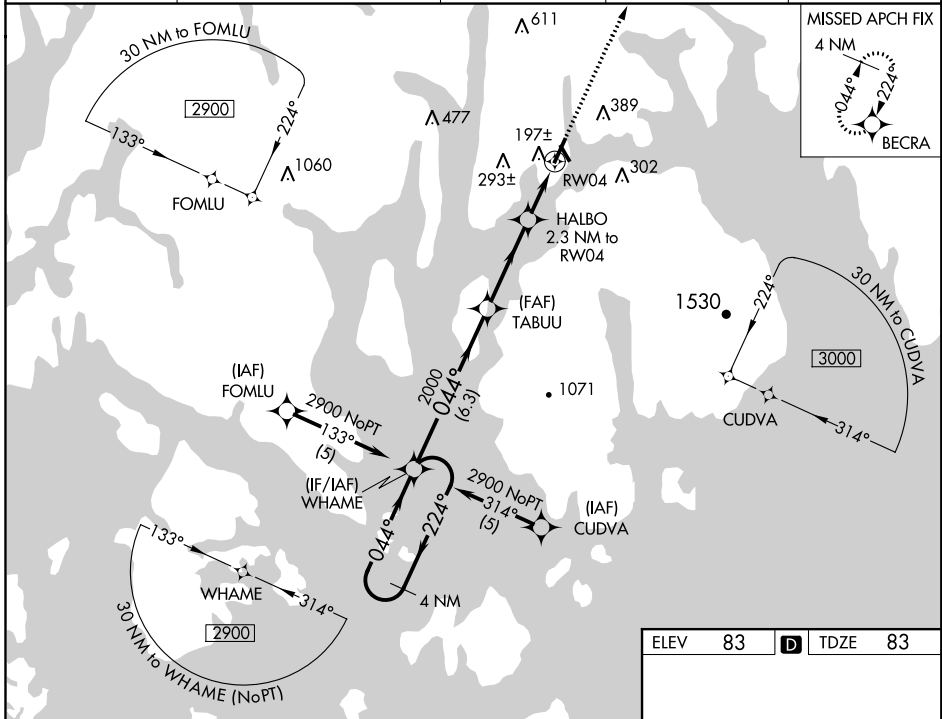
HANCOCK COUNTY/BAR HARBOR (BHB)

RNP APCH - GPS

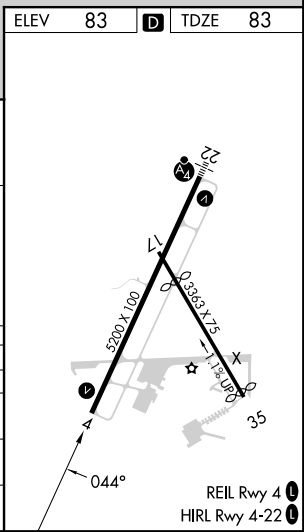
Baro-VNAV NA when using Bangor altimeter setting. For uncompensated Baro-VNAV systems, LNAV/VNAV NA below -15°C or above 49°C. When local altimeter setting not received, use Bangor altimeter setting and increase LPV DA to 416 feet, increase LNAV/VNAV DA to 547 feet, and all visibilities ¼ SM. Increase all MDAs 100 feet and LNAV visibility Cats C/D, and Circling visibility Cats C/D ¼ SM. Circling Rwy 17, 35 NA at night. Rwy 4 helicopter visibility reduction below ¼ SM NA.

MISSED APPROACH:  
Climb to 3000 direct  
BECRA and hold.

AWOS-3PT <b>118.35</b>	BANGOR APP CON <b>133.6 284.65</b>	CLNC DEL <b>119.9</b>	UNICOM <b>123.0 (CTAF)</b>	<b>122.7</b>
---------------------------	---------------------------------------	--------------------------	-------------------------------	--------------



CATEGORY	A	B	C	D
LPV DA		333-¾	250 (300-¾)	
LNAV/VNAV DA		464-1½	381 (400-1½)	
LNAV MDA	480-1	397 (400-1)	480-1½	397 (400-1½)
CIRCLING	600-1 517 (600-1)	720-1 637 (700-1)	720-1¾ 637 (700-1¾)	840-2½ 757 (800-2½)



NE-1, 03 NOV 2022 to 01 DEC 2022

NE-1, 03 NOV 2022 to 01 DEC 2022