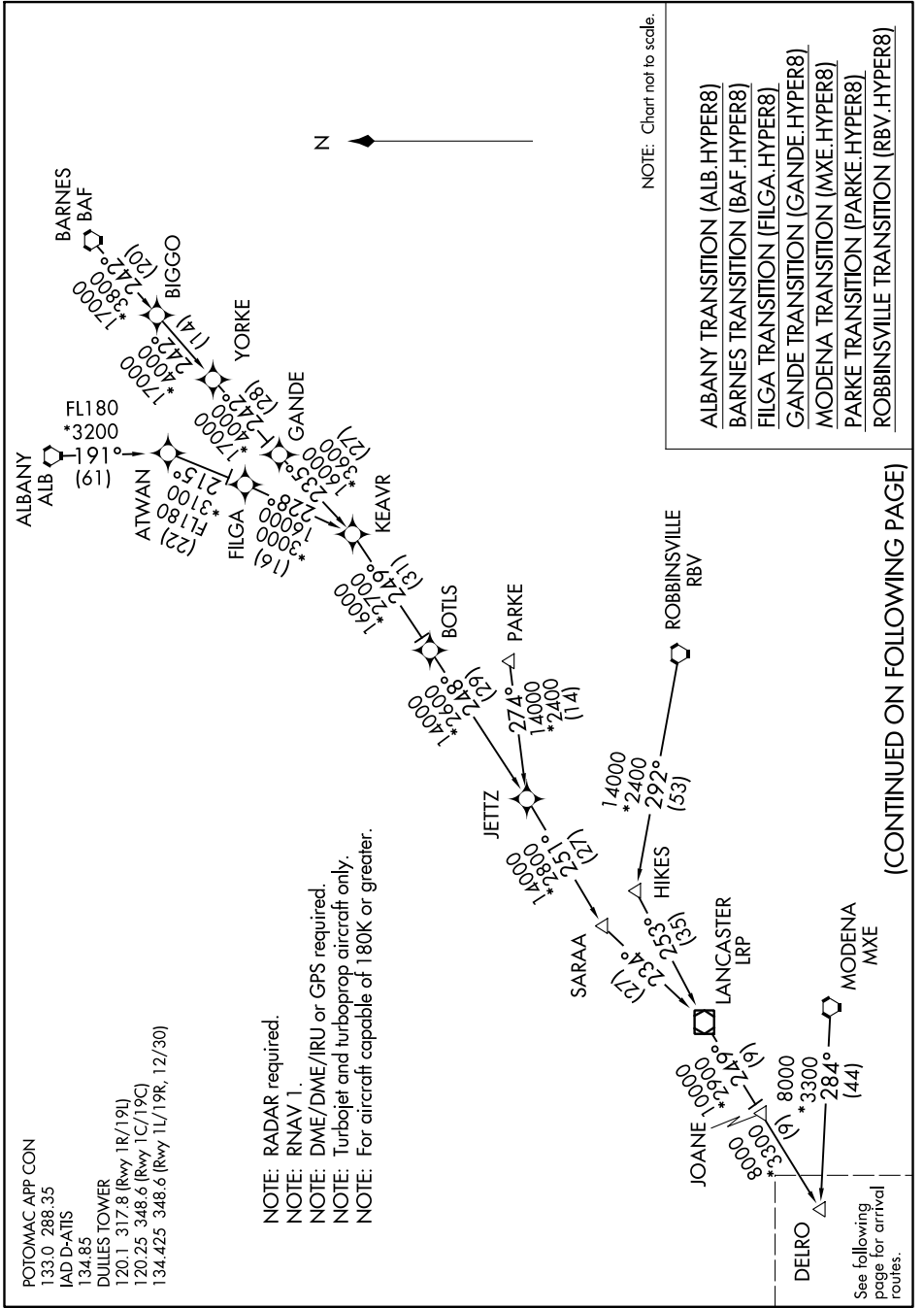


HYPER EIGHT ARRIVAL (RNAV) Transition Routes

WASHINGTON, DC

NE-3, 03 NOV 2022 to 01 DEC 2022



(CONTINUED ON FOLLOWING PAGE)

NE-3, 03 NOV 2022 to 01 DEC 2022

HYPER EIGHT ARRIVAL (RNAV) Transition Routes

WASHINGTON, DC

See following page for arrival routes.

POTOMAC APP CON
 133.0 288.35
 IAD D-ATIS
 134.85
 DULLES TOWER
 120.1 317.8 (Rwy 1R/19L)
 120.25 348.6 (Rwy 1C/19C)
 134.425 348.6 (Rwy 1L/19R, 12/30)

NOTE: RADAR required.
 NOTE: RNAV 1.
 NOTE: DME/DME/IRU or GPS required.
 NOTE: Turbojet and turboprop aircraft only.
 NOTE: For aircraft capable of 180K or greater.

JOANE 10000
 8000
 3300
 19
 244
 19
 8000
 *3300
 28.4°
 (44)

DELO

JETTZ
 14000
 *2400
 29.2°
 (53)

ROBBINSVILLE
 RBV

BOTLS
 14000
 *3900
 27.4°
 (14)

PARKE

ALBANY
 ALB
 191
 (19)

ATWAN
 FL180
 215
 (22)

FILGA
 FL180
 215
 (19)

KEAVR
 16000
 *2288
 3000
 (16)

BOTLS
 14000
 *3900
 27.4°
 (14)

PARKE
 14000
 *2400
 27.4°
 (14)

JETTZ
 14000
 *2400
 29.2°
 (53)

SARAA
 14000
 *2511
 23.4°
 (27)

HIKES
 14000
 *2400
 29.2°
 (53)

LANCASTER
 LRP
 8000
 *2900
 19
 244
 19
 8000
 *3300
 28.4°
 (44)

MODENA
 MXE