

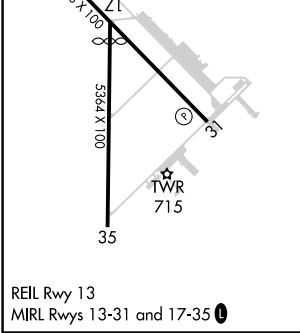
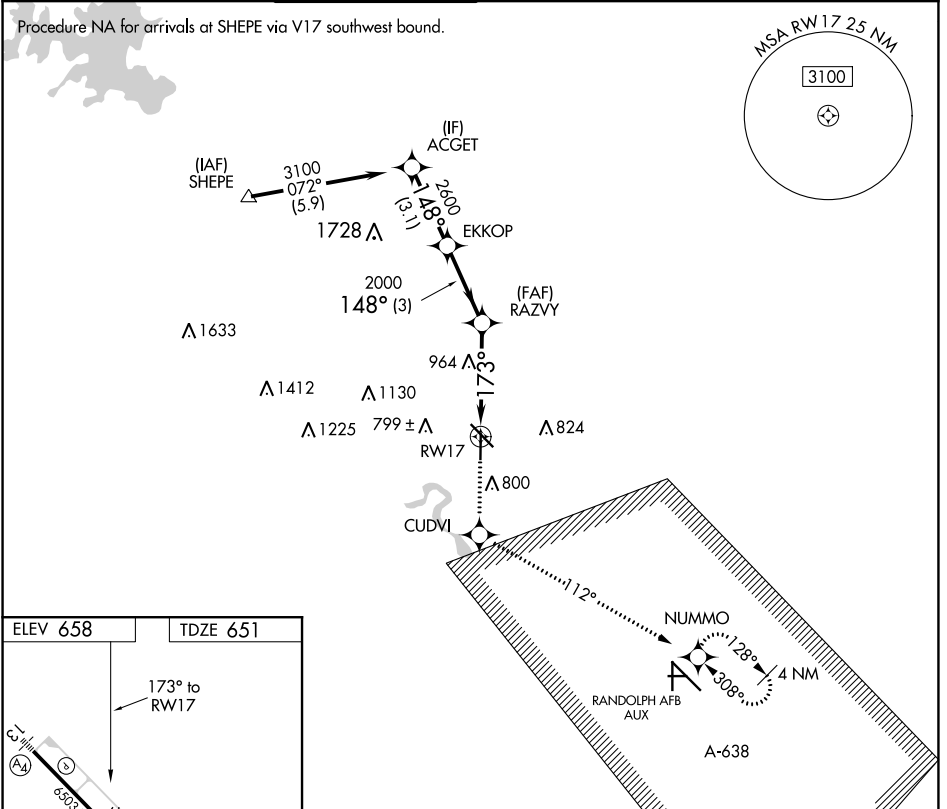
APP CRS	Rwy Idg	<b>4842</b>
<b>173°</b>	TDZE	<b>651</b>
	Apt Elev	<b>658</b>

# RNAV (GPS) RWY 17

NEW BRAUNFELS NTL (BAZ)

RNP APCH.		MISSED APPROACH: Climb to 3500 direct CUDVI and via 112° track to NUMMO and hold, continue climb-in-hold to 3500.	
<p><b>▼</b> When local altimeter setting not received, use San Marcos Rgnl altimeter setting and increase all MDAs 60 feet and visibility Cat C 1/4 SM.  <b>▲</b> VDP NA when using San Marcos Rgnl altimeter setting.</p>			

ATIS	SAN ANTONIO APP CON	NEW BRAUNFELS TOWER*	GND CON	CLNC DEL	CLNC DEL	UNICOM	CTAF
<b>119.325</b>	<b>124.45 335.625</b>	<b>127.05 285.4</b>	<b>120.175</b>	<b>134.75</b>	<b>134.75</b> (When twr closed)	<b>122.7</b>	<b>127.05</b>



3500	CUDVI	NUMMO	ACGET
↑	✧	✧	
	Ir 112°		
CATEGORY		A	B
LNVA MDA		1220-1	569 (600-1)
			C
		1220-1 <sup>5</sup> / <sub>8</sub>	1220-1 <sup>3</sup> / <sub>4</sub>
		569 (600-1 <sup>5</sup> / <sub>8</sub> )	569 (600-1 <sup>3</sup> / <sub>4</sub> )

SC-3, 03 NOV 2022 to 01 DEC 2022

SC-3, 03 NOV 2022 to 01 DEC 2022