

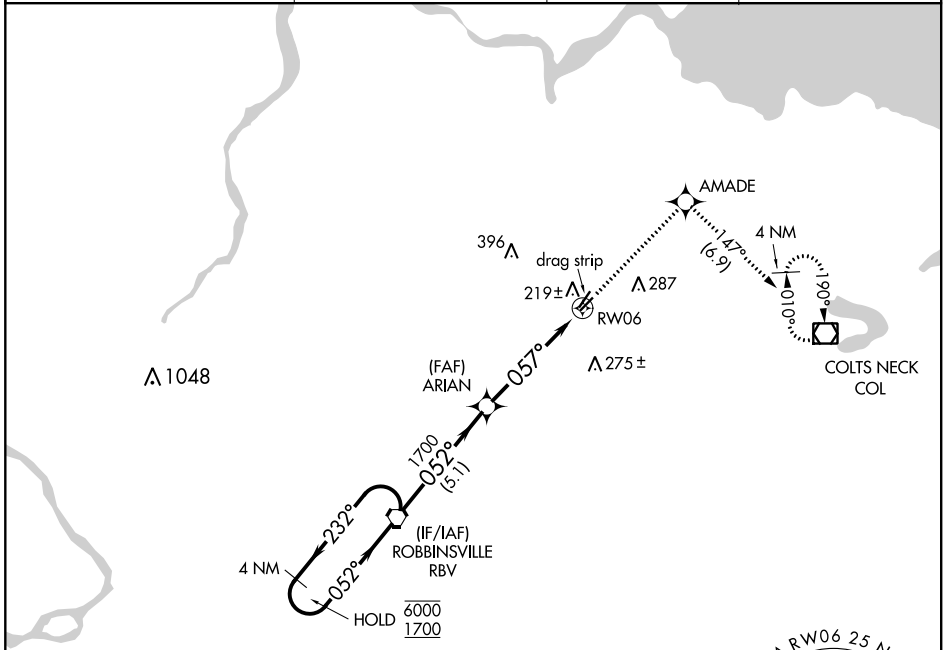
APP CRS	Rwy Idg	<b>2994</b>
<b>057°</b>	TDZE	<b>87</b>
	Apt Elev	<b>87</b>

# RNAV (GPS) RWY 6

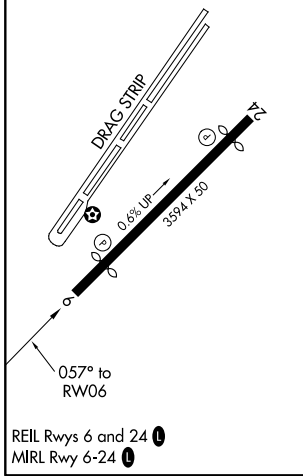
OLD BRIDGE (3N6)

RNP APCH.	Procedure NA at night. Rwy 6 helicopter visibility reduction below 1 SM NA. Use Belmar/Farmingdale altimeter setting; when not received, use Wrightstown altimeter setting and increase all MDA 20 feet.	MISSED APPROACH: Climb to 2000 direct AMADE and on track 147° to COL VOR/DME and hold.	
Procedure NA at night. Use Belmar/Farmingdale altimeter setting; when not received, use Wrightstown altimeter setting and increase all MDA 20 feet.			

BLM AWOS-3PT <b>121.625</b>	MC GUIRE APP CON <b>126.475 363.8</b>	GCO <b>121.725</b>	UNICOM <b>123.075 (CTAF)</b>
--------------------------------	--	-----------------------	---------------------------------

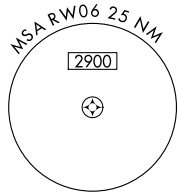


ELEV 87	TDZE 87
---------	---------



OLD BRIDGE, NEW JERSEY  
 Orig-C 15AUG19

NoPT for arrival on RBV VORTAC airway radials 238 CW 289.



Visual Segment - Obstacles.				2000	AMADE	tr 147°	COL
4 NM Holding Pattern							
RBV VORTAC 6000 ← 232° 1700 → 052°				ARIAN 1700		RWY 6 057°	
				5.1 NM		4.9 NM	
CATEGORY	A	B	C	D			
LNAV MDA	660-1 573 (600-1)			NA			

NE-2, 03 NOV 2022 to 01 DEC 2022

NE-2, 03 NOV 2022 to 01 DEC 2022