

ORANGE GROVE, TEXAS

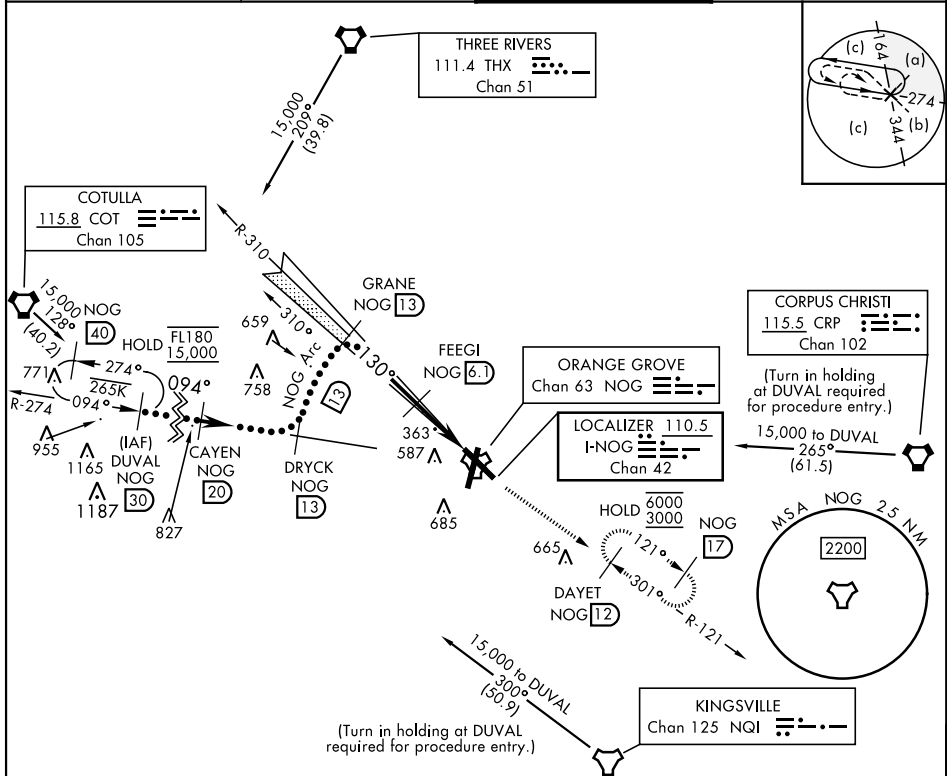
HI-ILS W or LOC/DME W RWY 13

LOC/DME I-NOG 110.5 Chan 42	APCH CRS 130°	Rwy Idg TDZE Arprt Elev 8001 257 257	AL-6553 [USN]	ORANGE GROVE NALF (KNOG)
---	-------------------------	--	---------------	--------------------------

TACAN required.

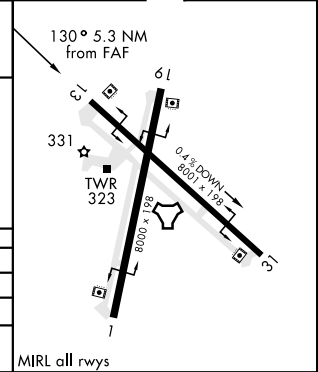
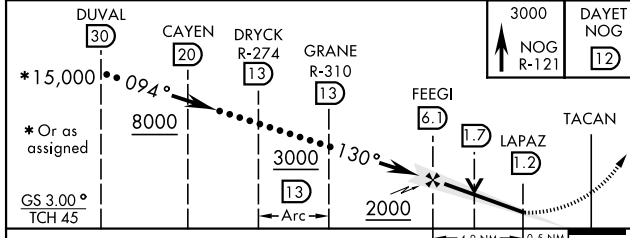
MISSED APPROACH: Climb to 3000 on NOG TACAN R-121 to DAYET and hold.

ATIS ★ 254.35	KINGSVILLE APP CON 119.90 290.45	TOWER ★ 128.4 281.425	GND CON 229.4
-------------------------	--	---------------------------------	-------------------------



EMERG SAFE ALT 100 NM 16,000

ELEV 257	TDZE 257
----------	----------



CATEGORY	C	D	E
S-ILS 13	457- $\frac{3}{4}$	200 (200- $\frac{3}{4}$)	
S-LOC 13	620-1	363 (400-1)	
CIRCLING	920-1 $\frac{3}{4}$ 663 (700-1 $\frac{3}{4}$)	1000-2 $\frac{1}{2}$ 743 (800-2 $\frac{1}{2}$)	1000-2 $\frac{3}{4}$ 743 (800-2 $\frac{3}{4}$)

MIRL all rwys

ORANGE GROVE, TEXAS 27°54'N-98°03'W ORANGE GROVE NALF (KNOG)
Orig 24MAR22

HI-ILS W or LOC/DME W RWY 13

SC-3, 03 NOV 2022 to 01 DEC 2022

SC-3, 03 NOV 2022 to 01 DEC 2022