

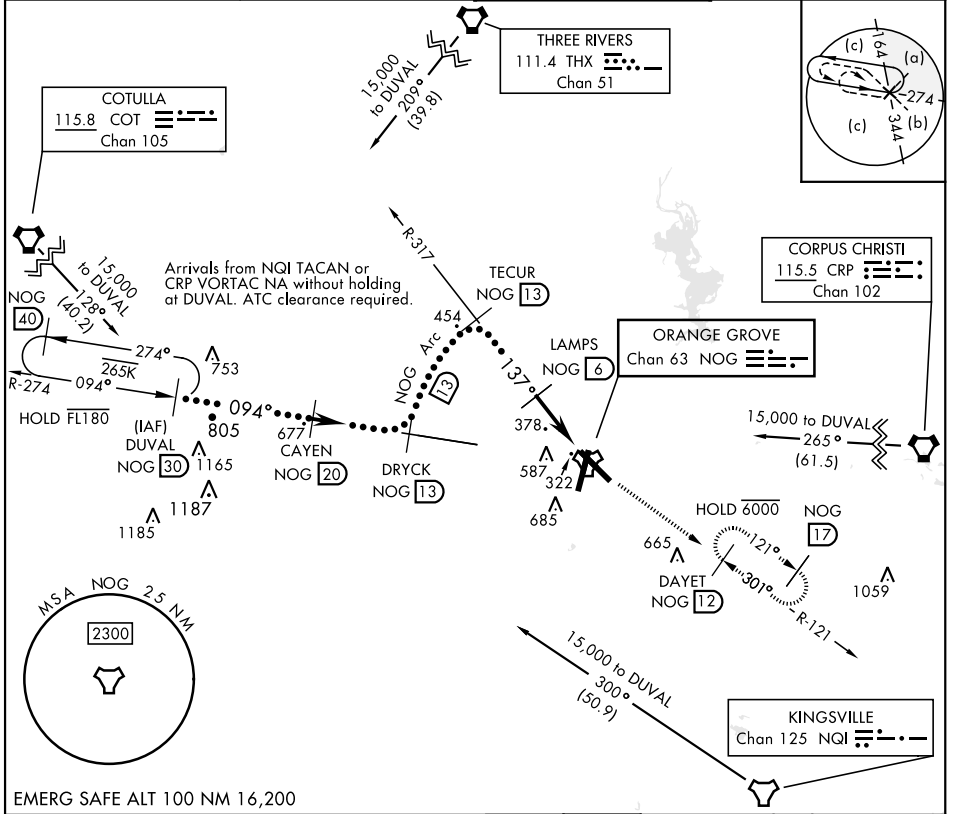
ORANGE GROVE, TEXAS

HI-TACAN Y RWY 13

TACAN Chan 63	APCH CRS 137°	Rwy Idg TDZE Arpt Elev 8001 257 257	AL-6553 [USN]	ORANGE GROVE NALF (KNOG)
-------------------------	-------------------------	---	---------------	--------------------------

MISSED APPROACH: Climbing right turn to 3000 and intercept NOG TACAN R-121 to DAYET and hold.

ATIS ★ 254.35	KINGSVILLE APP CON 119.90 290.45	TOWER ★ 128.4 281.425	GND CON 229.4
-------------------------	--	---------------------------------	-------------------------



EMERG SAFE ALT 100 NM 16,200

DUVAL NOG 30	CAYEN NOG 20	DRYCK R-274 NOG 13	TECUR R-317 NOG 13	LAMPS NOG 6	TACAN	DAYET NOG 12
* 15,000	8000	3000	2000	3000	2000	3000
* Or as assigned						

ELEV 257	TDZE 257
137° to TACAN	

CATEGORY	C	D	E
S-13	640-1 1/8	383	(400-1 1/8)
CIRCLING	920-1 1/4 663 (700-1 3/4)	1000-2 1/2 743 (800-2 1/2)	1000-2 3/4 743 (800-2 3/4)

MIRL all rwys

ORANGE GROVE, TEXAS 27°54'N-98°03'W ORANGE GROVE NALF (KNOG)

HI-TACAN Y RWY 13

SC-3, 03 NOV 2022 to 01 DEC 2022

SC-3, 03 NOV 2022 to 01 DEC 2022

