

ORANGE GROVE, TEXAS

# ILS Z or LOC/DME Z RWY 13

LOC/DME I-NOG <b>110.5</b> Chan <b>42</b>	APCH CRS <b>130°</b>	Rwy ldg TDZE Arprt Elev <b>8001</b> <b>257</b> <b>257</b>
---	-------------------------	--

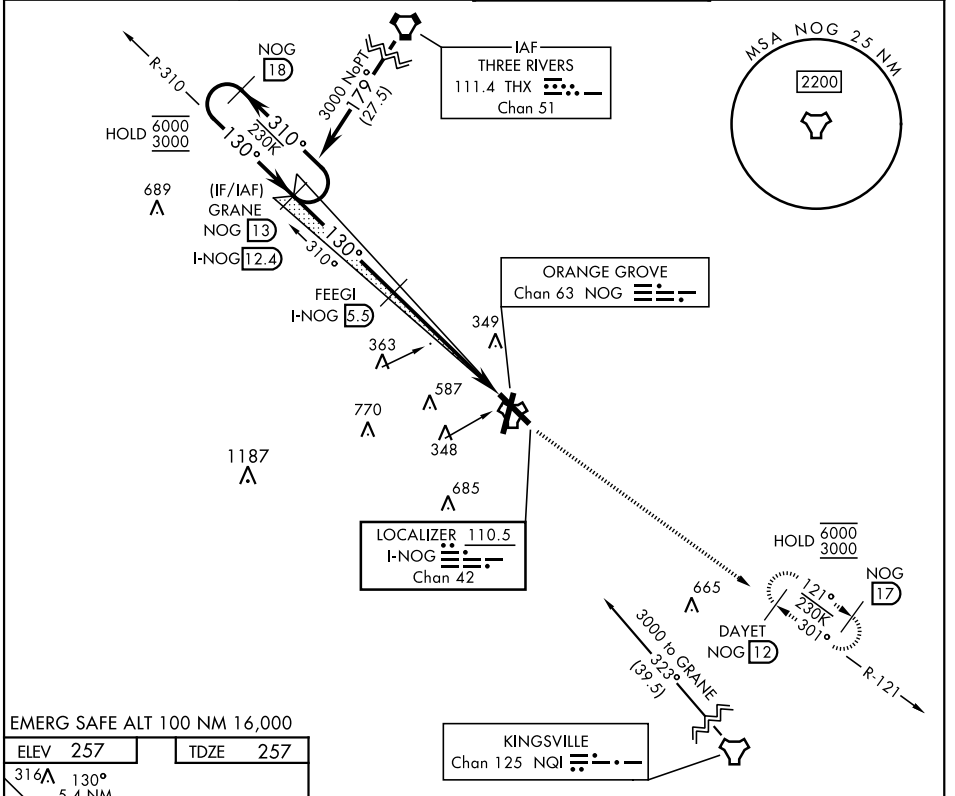
AL-6553 [USN]

ORANGE GROVE NALF (KNOG)

TACAN required.

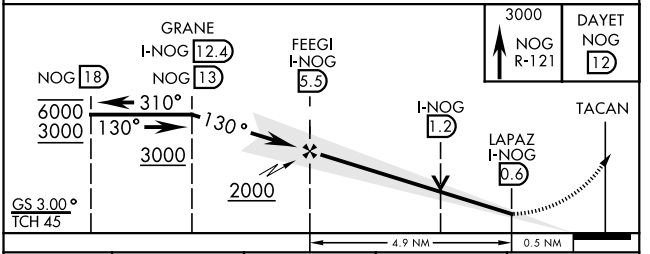
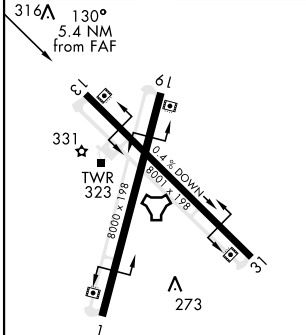
MISSED APPROACH: Climb to 3000 on NOG TACAN R-121 to DAYET and hold.

ATIS ★ <b>254.35</b>	KINGSVILLE APP CON <b>119.90 290.45</b>	TOWER ★ <b>128.4 281.425</b>	GND CON <b>229.4</b>
-------------------------	--	---------------------------------	-------------------------



EMERG SAFE ALT 100 NM 16,000

ELEV 257	TDZE 257
----------	----------



CATEGORY	A	B	C	D
S-ILS 13		457- $\frac{3}{4}$	200 (200- $\frac{3}{4}$ )	
S-LOC 13		620-1	363 (400-1)	
CIRCLING	660-1 403 (500-1)	720-1 463 (500-1)	920-1 $\frac{3}{4}$ 663 (700-1 $\frac{3}{4}$ )	1000-2 $\frac{1}{2}$ 743 (800-2 $\frac{1}{2}$ )

ORANGE GROVE, TEXAS

27°54'N-98°03'W

ORANGE GROVE NALF (KNOG)

Orig 24MAR22

# ILS Z or LOC/DME Z RWY 13

SC-3, 03 NOV 2022 to 01 DEC 2022

SC-3, 03 NOV 2022 to 01 DEC 2022