

WAAS CH <b>40124</b> <b>W21A</b>	APP CRS <b>197°</b>	Rwy Idg TDZE Apt Elev	<b>8422</b> <b>7032</b> <b>7055</b>
--	------------------------	-----------------------------	---

# RNAV (GPS) RWY 21

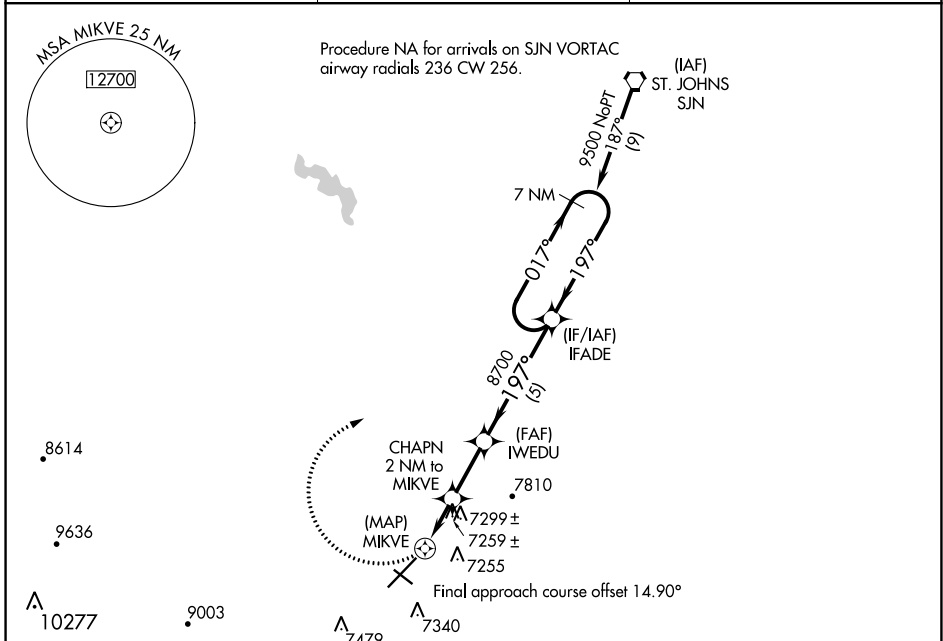
SPRINGERVILLE MUNI (JTC)

**▼** DME/DME RNP-0.3 NA. Rwy 3, 11, 29 helicopter visibility reduction below 1 SM NA. Circling Rwy 3, 11, 29 NA at night.

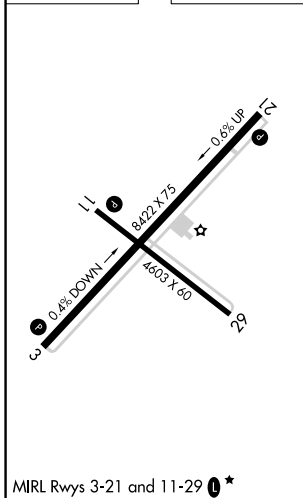
**▲** NA

MISSED APPROACH: Climbing right turn to 12000 direct IFADE and hold, continue climb-in-hold to 12000.

AWOS-3PT <b>119.65</b>	ALBUQUERQUE CENTER <b>132.9 239.05</b>	UNICOM <b>122.8</b> (CTAF) <b>0*</b>
---------------------------	---	---



ELEV 7055	TDZE 7032
-----------	-----------



12000	IFADE	VGSI and descent angles not coincident. (VGSI Angle 3.00/TCH 35)	7 NM Holding Pattern
	CHAPN 2 NM to MİKVE	IWEDU	IFADE
	MIKVE	8700	9500
	7900	017°	197°
CATEGORY	A	B	C
LP MDA	7520-1	488 (500-1)	NA
LNAV MDA	7720-1	688 (700-1)	NA
CIRCLING	7780-1 725 (800-1)	7840-1 785 (800-1)	NA

SW-4, 03 NOV 2022 to 01 DEC 2022

SW-4, 03 NOV 2022 to 01 DEC 2022