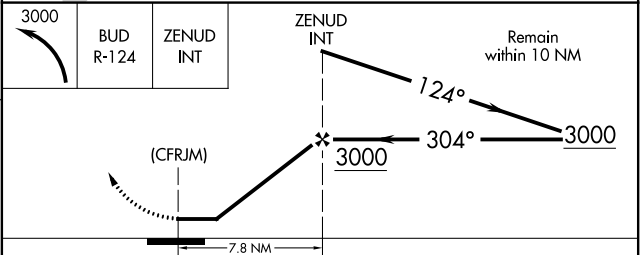
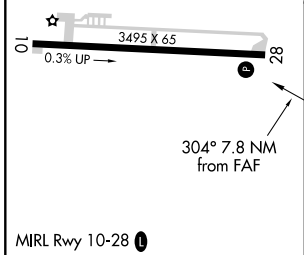
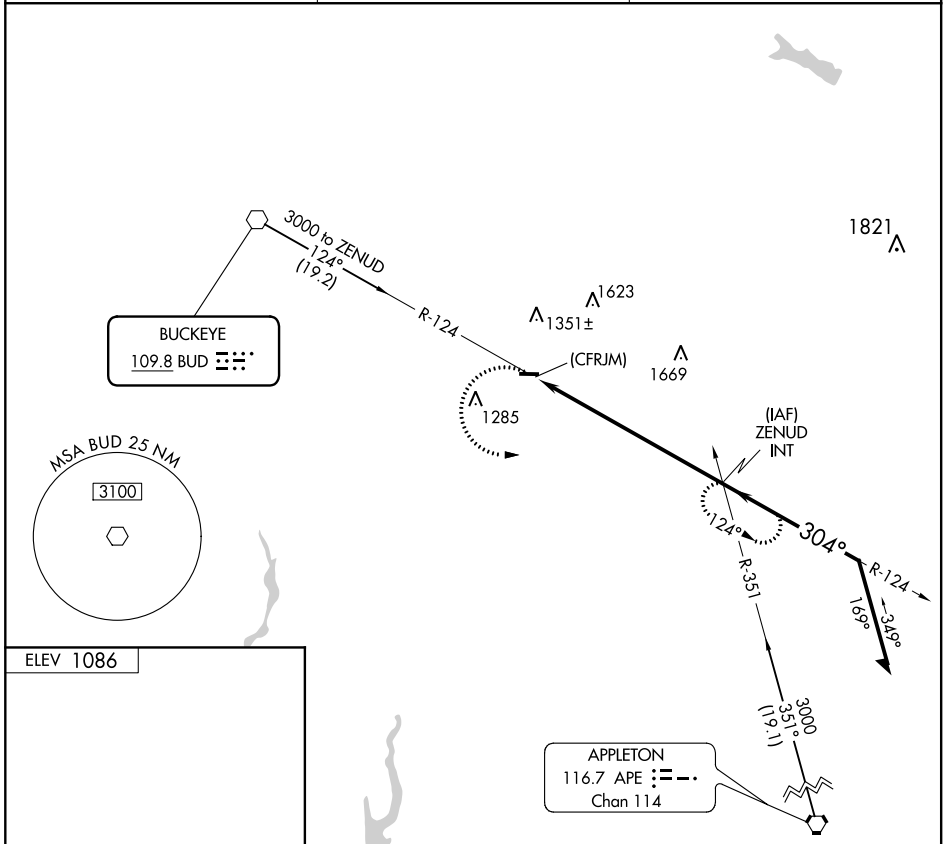


VOR BUD 109.8	APP CRS 304°	Rwy Idg TDZE Apt Elev	N/A N/A 1086
-------------------------	------------------------	-----------------------------	---

VOR-A
MORROW COUNTY (4I9)

▽ Circling Rwy 28 NA at night. Rwy 28 helicopter visibility reduction below 1 SM NA. Use Marion altimeter setting, when not received use Mansfield altimeter setting and increase all MDA 60 feet and all visibilities ¼ SM.
▲ NA MISSED APPROACH: Climbing left turn to 3000 on BUD VOR R-124 to ZENUD INT and hold.

MNN ASOS 119.975	COLUMBUS APP CON 125.95 317.775	UNICOM 122.8 (CTAF) 0
----------------------------	---	---------------------------------



FAF to MAP 7.8 NM					CATEGORY	A	B	C	D	
Knots	60	90	120	150	180	1880-1	794 (800-1)	1940-2½	854 (900-2½)	NA
Min:Sec	7:48	5:12	3:54	3:07	2:36	C CIRCLING				

EC-2, 03 NOV 2022 to 01 DEC 2022

EC-2, 03 NOV 2022 to 01 DEC 2022