

WAAS CH 90531 W07A	APP CRS 068°	Rwy Idg TDZE Apt Elev	5001 653 653
--	------------------------	-----------------------------	---

RNAV (GPS) RWY 7

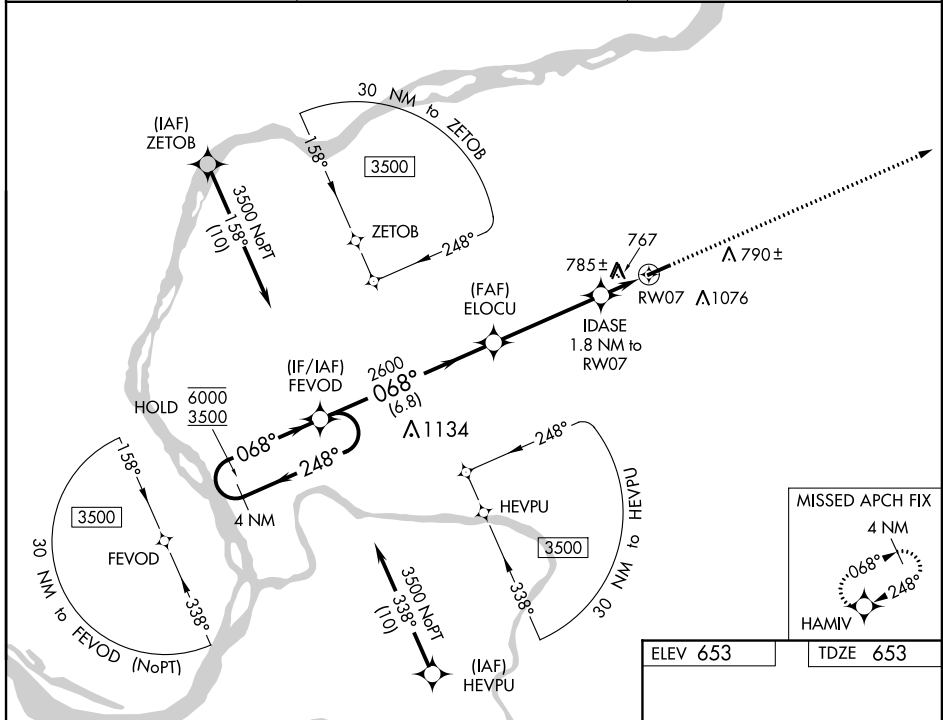
MARION-CRITTENDEN COUNTY JAMES C JOHNSON RGNL (GDA)

RNP APCH - GPS.

▼ Rwy 7 helicopter visibility reduction below 1 SM NA.
▲ For uncompensated Baro-VNAV systems, LNAV/VNAV NA below -16°C or above 54°C.
 Straight-in Rwy 7 NA at night, Circling Rwy 7 NA at night.

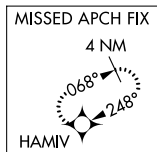
MISSED APPROACH:
 Climb to 3500 direct
 HAMIV and hold.

AWOS-3P 118.15	MEMPHIS CENTER 133.65 292.15	CTAF 122.9
--------------------------	--	----------------------

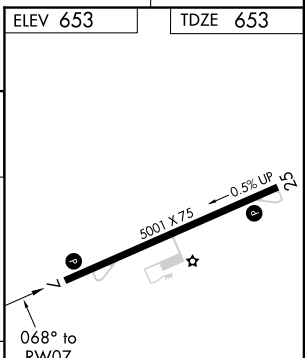
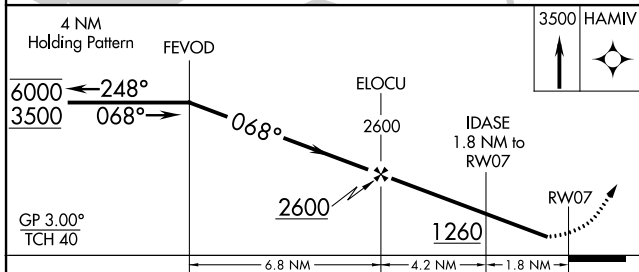


SE-1, 03 NOV 2022 to 01 DEC 2022

SE-1, 03 NOV 2022 to 01 DEC 2022



ELEV 653	TDZE 653
----------	----------



CATEGORY	A	B	C	D
LPV DA		903-1	250 (300-1)	
LNAV/VNAV DA		1132-1 1/8	479 (500-1 1/8)	
LNAV MDA	1080-1	427 (500-1)	1080-1 1/4	427 (500-1 1/4)
C CIRCLING	1180-1 527 (600-1)	1360-1 707 (800-1)	1380-2 727 (800-2)	1380-2 1/4 727 (800-2 1/4)

MIRL Rwy 7-25 **1**
 REIL Rwy 7 and 25 **1**

RNAV (GPS) RWY 7