

LOC/DME I-VOE 110.3 Chan 40	APP CRS 326°	Rwy Idg TDZE Apt Elev	7819 334 335
--	------------------------	-----------------------------	---

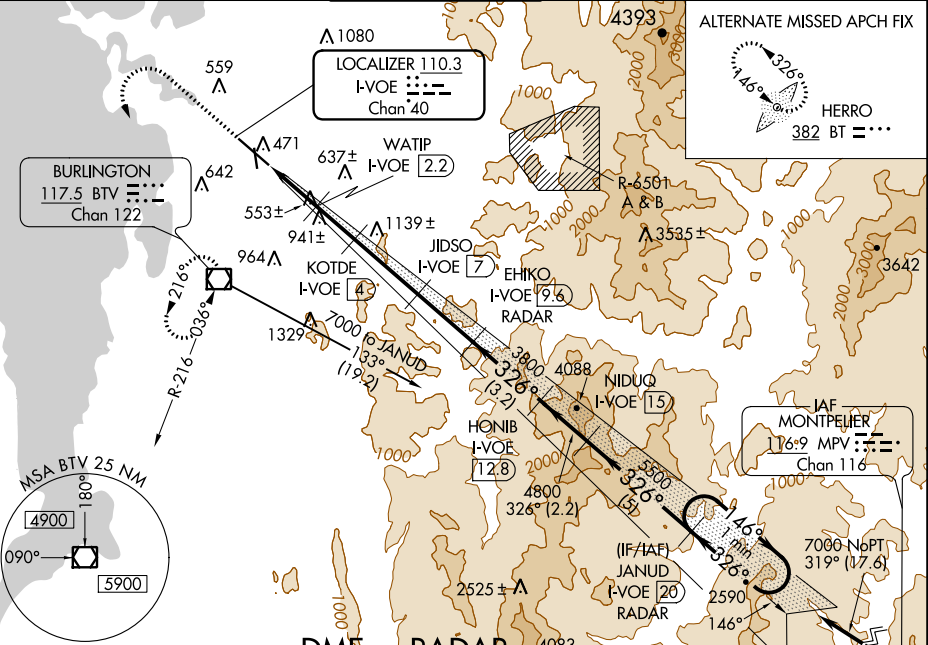
ILS or LOC/DME RWY 33

BURLINGTON INTL (BTV)

⚠ Circling to Rwy 1 NA at night. For inop ALS, increase S-ILS 33 Cat A/B visibility to RVR 4500 and S-LOC 33 Cat E to 2 SM. Rwy 33 helicopter visibility reduction below RVR 4000 NA.
❄ -10°C Autopilot coupled approaches NA.

MALSF MISSED APPROACH: Climb to 1200 then climbing left turn to 2800 direct BTV VOR/DME and hold, continue climb-in-hold to 2800.

ATIS 123.8 269.9	BURLINGTON APP CON * 121.1 278.8	BURLINGTON TOWER * 118.3 (CTAF) 257.8	GND CON 126.3 348.6	CLNC DEL 119.15	UNICOM 122.95
----------------------------	--	---	-------------------------------	---------------------------	-------------------------

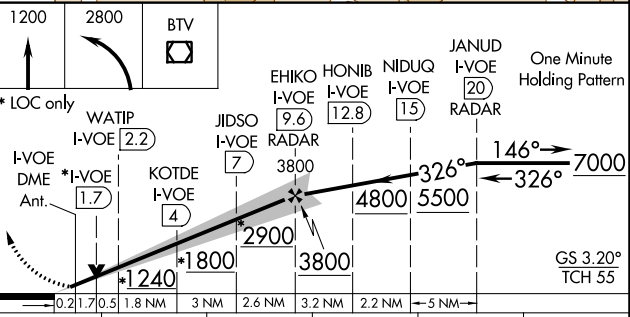
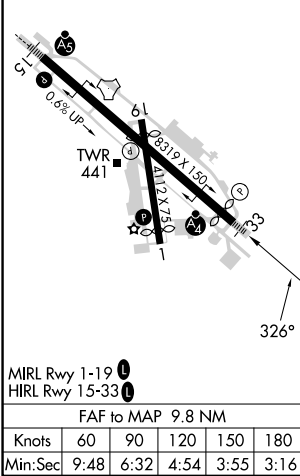


NE-1, 01 DEC 2022 to 29 DEC 2022

NE-1, 01 DEC 2022 to 29 DEC 2022

ELEV 335	D	TDZE 334
----------	----------	----------

DME or RADAR REQUIRED



CATEGORY	A	B	C	D	E
S-ILS 33	608/40	274 (300-¾)	608/50	274 (300-1)	NA
S-LOC 33	1020/40	686 (700-¾)	1020-1¾	686 (700-1¾)	
C CIRCLING	1020-1	685 (700-1)	1220-2¾ 885 (900-2¾)	1380-3	1045 (1100-3)