

# HI-TACAN RWY 13R

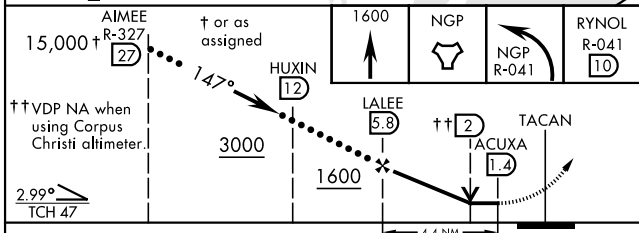
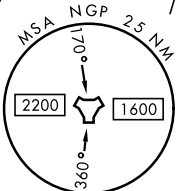
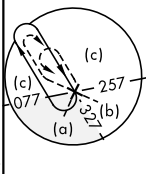
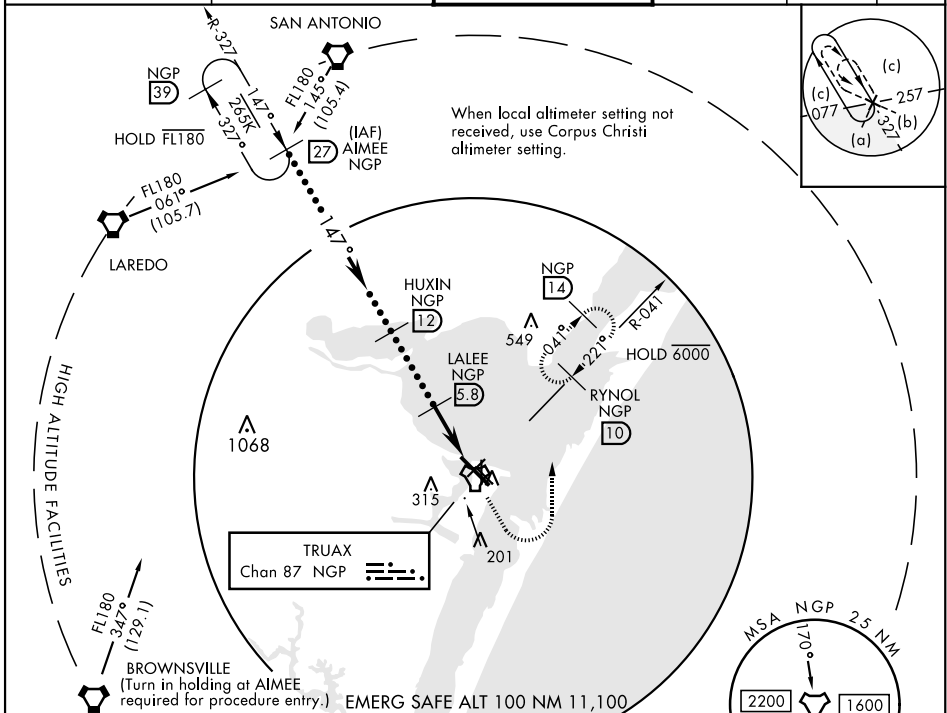
TACAN Chan <b>87</b>	NGP <b>147°</b>	APCH CRS <b>147°</b>	Rwy Idg <b>8002</b>	TDZE <b>13</b>	Arpt Elev <b>19</b>
-------------------------	--------------------	-------------------------	------------------------	-------------------	------------------------

AL-98 [USN] CORPUS CHRISTI NAS (TRUAX FLD) (KNGP)

**▼** \* When ALS inop, increase vis to 1 1/8 miles.

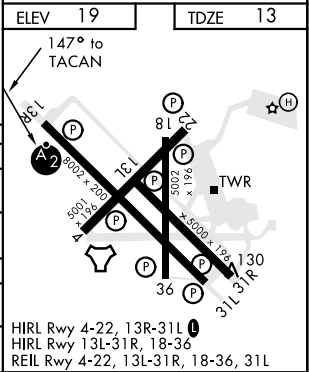
**SALSF** MISSED APPROACH: Climb to 1600 direct NGP TACAN and turn left to intercept R-041 and hold.

ATIS ★ <b>127.9 290.9</b>	CORPUS CHRISTI APP CON <b>120.9 348.725</b>	NAVY CORPUS TOWER ★ <b>134.85 0 340.2</b>	GND CON <b>118.7 257.85</b>	CLNC DEL <b>314.3</b>	ASR/ PAR
------------------------------	------------------------------------------------	----------------------------------------------	--------------------------------	--------------------------	-------------



ELEV 19	TDZE 13
---------	---------

CATEGORY	C	D	E
S-13R*	400-7/8	387 (400-7/8)	
CIRCLING	540-1 1/2 521 (600-1 1/2)	620-2 601 (700-2)	620-2 1/4 601 (700-2 1/4)
CORPUS CHRISTI ALTIMETER SETTING			
S-13R *	420-1	407 (500-1)	
CIRCLING	580-1 1/2 561 (600-1 1/2)	660-2 641 (700-2)	660-2 1/4 641 (700-2 1/4)



CORPUS CHRISTI, TEXAS 27°42'N-97°17'W CORPUS CHRISTI NAS (TRUAX FLD) (KNGP)

# HI-TACAN RWY 13R

SC-3, 01 DEC 2022 TO 29 DEC 2022

SC-3, 01 DEC 2022 TO 29 DEC 2022