

CORPUS CHRISTI, TEXAS

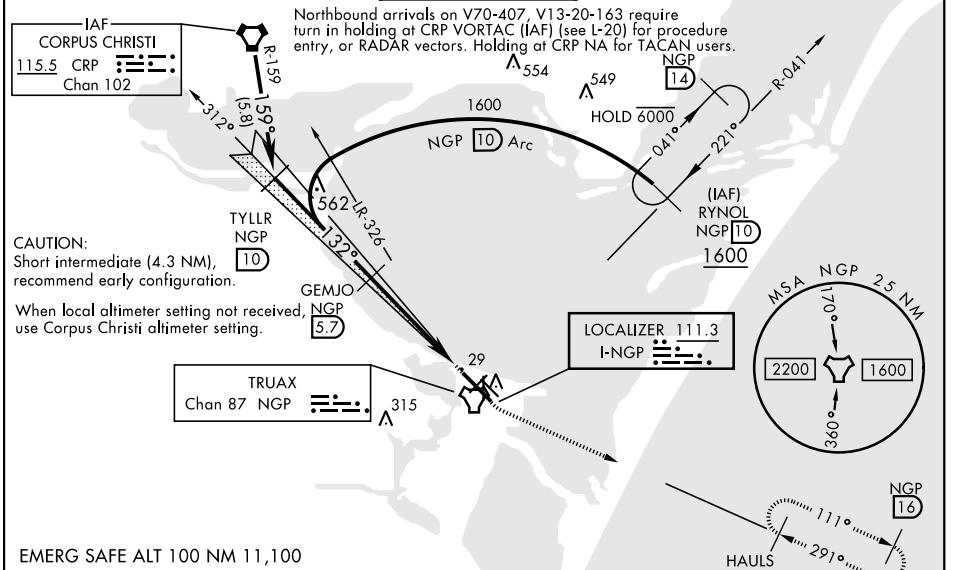
ILS Z or LOC/DME RWY 13R

LOC I-NGP 111.3	APCH CRS 132°	Rwy Ldg TDZE Arpt Elev 8002 13 19
---------------------------	-------------------------	---

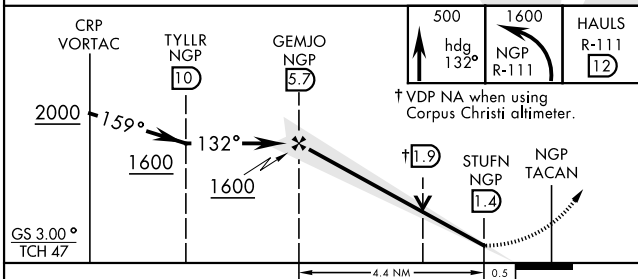
AL-98 [USN] CORPUS CHRISTI NAS (TRUAX FLD) (KNGP)

DME Required.		SALSF 	MISSED APPROACH: Climb to 500 hdg 132°, then climbing left turn to 1600 and intercept NGP TACAN R-111 to HAULS and hold.
* When ALS inop, increase vis to 1 mile. ** When ALS inop, increase CAT AB vis to 1 mile, CAT CD to 1 1/8 miles.			

ATIS★ 127.9 290.9	APP CON 128.675 343.75	NAVY CORPUS TOWER★ 134.85 340.2	GND CON 118.7 257.85	CLNC DEL 314.3	ASR/PAR
-----------------------------	----------------------------------	---	--------------------------------	--------------------------	---------

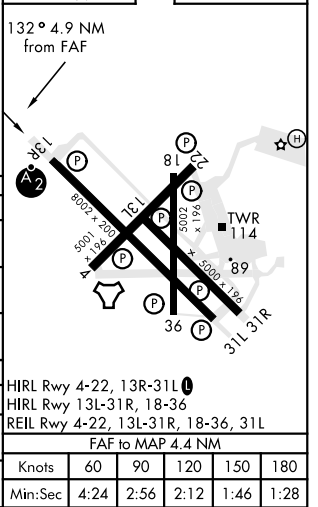


EMERG SAFE ALT 100 NM 11,100



ELEV 19	TDZE 13
---------	---------

CATEGORY	A	B	C	D
S-ILS 13R	213-3/4	200	(200-3/4)	
S-LOC/DME 13R*	380-3/4	367	(400-3/4)	
C CIRCLING	480-1 461 (500-1)		540-1 1/2 521 (600-1 1/2)	620-2 601 (700-2)
CORPUS CHRISTI ALTIMETER SETTING				
S-ILS 13R	245-3/4	232	(300-3/4)	
S-LOC/DME 13R**	420-3/4 407 (500-3/4)		420-1 407 (500-1)	
C CIRCLING	500-1 481 (500-1)	520-1 501 (600-1)	580-1 1/2 561 (600-1 1/2)	660-2 641 (700-2)



CORPUS CHRISTI, TEXAS 27°42'N-97°17'W CORPUS CHRISTI NAS (TRUAX FLD) (KNGP)

Amdt 1 16JUL20

ILS Z or LOC/DME RWY 13R

SC-3, 01 DEC 2022 to 29 DEC 2022

SC-3, 01 DEC 2022 to 29 DEC 2022