

CORPUS CHRISTI, TEXAS

RNAV (GPS) RWY 31L

CORPUS CHRISTI NAS (TRUAX FLD) (KNGP)

AL-98 [USN]

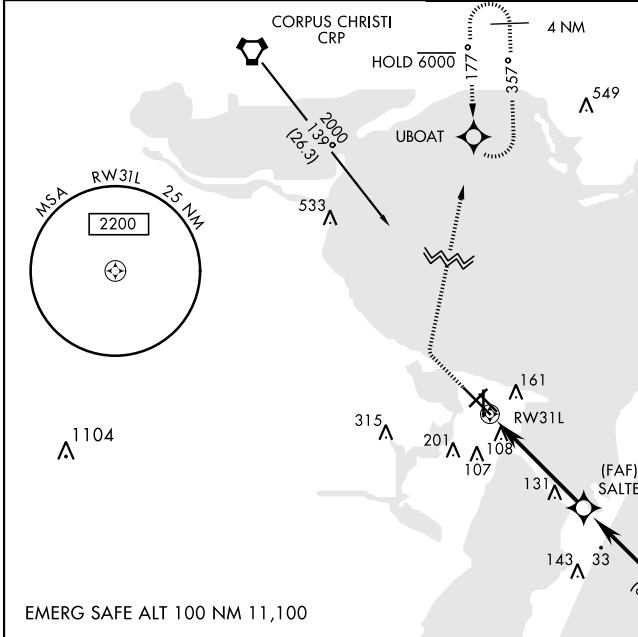
APCH CRS	Rwy Idg	8002
312°	TDZE	18
	Arprt Elev	19

RNP APCH - DME/DME RNP-0.3 NA.

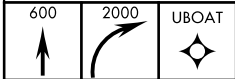
MISSED APPROACH: Climb to 600, then climbing right turn to 2000 direct UBOAT and hold.

▼ For uncompensated Baro-VNAV systems, LNAV/VNAV NA below -15°C (5°F) or above 54°C (129°F).

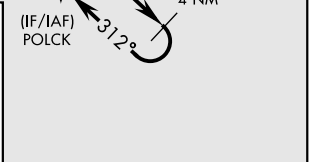
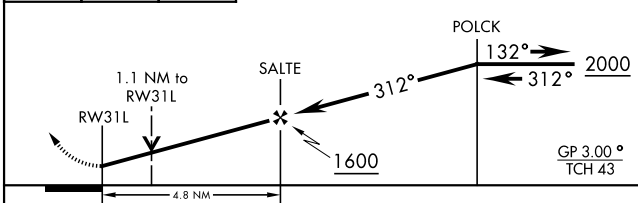
ATIS ★ 127.9 290.9	CORPUS CHRISTI APP CON 128.675 343.75	NAVY CORPUS TOWER ★ 134.85 340.2	GND CON 118.7 257.85	CLNC DEL 314.3	ASR/ PAR
------------------------------	---	--	--------------------------------	--------------------------	-------------



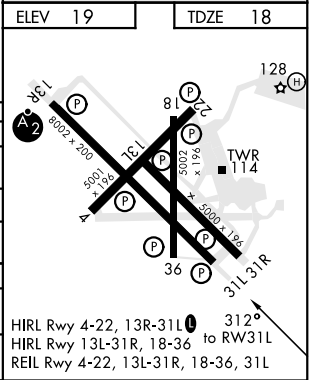
When local altimeter setting not received, use Corpus Christi altimeter setting. Baro-VNAV NA when local altimeter not available. Northbound arrivals on V70-407 and V13-20-163 require turn in holding at CRP VORTAC (See L-20), or RADAR vectors. Holding at CRP NA for TACAN users.



VDP NA when using Corpus Christi altimeter setting



CATEGORY	A	B	C	D
LNAV/VNAV DA	413-1½		395	(400-1½)
LNAV MDA	420-1	402 (500-1)	420-1½	402 (500-1½)
C CIRCLING	480-1	461 (500-1)	540-1½ 521 (600-1½)	620-2 601 (700-2)
CORPUS CHRISTI ALTIMETER SETTING				
LNAV MDA	460-1	442 (500-1)	460-1½	442 (500-1½)
C CIRCLING	500-1 481 (500-1)	520-1 501 (600-1)	580-1½ 561 (600-1½)	660-2 641 (700-2)



CORPUS CHRISTI, TEXAS
Amdt 1 16JUL20

27°42'N-97°17'W

CORPUS CHRISTI NAS (TRUAX FLD) (KNGP)

RNAV (GPS) RWY 31L

SC-3, 01 DEC 2022 to 29 DEC 2022

SC-3, 01 DEC 2022 to 29 DEC 2022