

CORPUS CHRISTI, TEXAS

# RNAV (GPS) RWY 4

CORPUS CHRISTI NAS (TRUAX FLD) (KNGP)

AL-98 [USN]

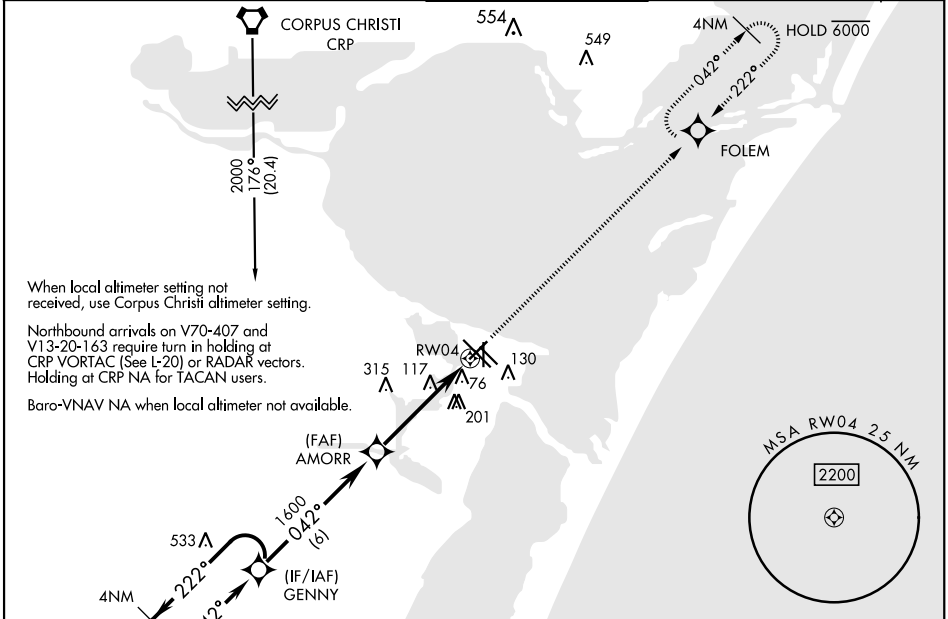
APCH CRS	Rwy ldg	5001
042°	TDZE	17
	Arpt Elev	19

RNP APCH - DME/DME RNP 0.3 NA.

▼ For uncompensated Baro-VNAV systems, LNAV/VNAV NA below -15°C (5°F) or above 42°C (108°F)

MISSED APPROACH: Climb to 2000 direct FOLEM and hold.

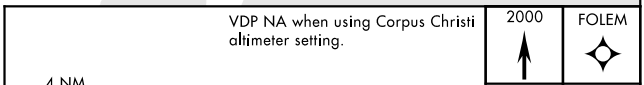
ATIS ★ <b>127.9 290.9</b>	CORPUS CHRISTI APP CON <b>128.675 343.75</b>	NAVY CORPUS TOWER ★ <b>134.85 340.2</b>	GND CON <b>118.7 257.85</b>	CLNC DEL <b>314.3</b>	ASR/ PAR
------------------------------	---	--	--------------------------------	--------------------------	-------------



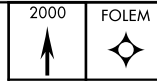
When local altimeter setting not received, use Corpus Christi altimeter setting.

Northbound arrivals on V70-407 and V13-20-163 require turn in holding at CRP VORTAC [See L-20] or RADAR vectors. Holding at CRP NA for TACAN users.

Baro-VNAV NA when local altimeter not available.

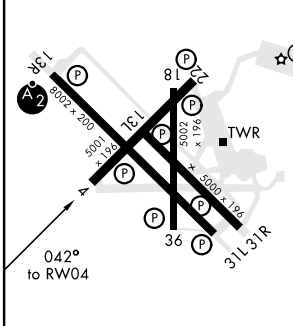


VDP NA when using Corpus Christi altimeter setting.

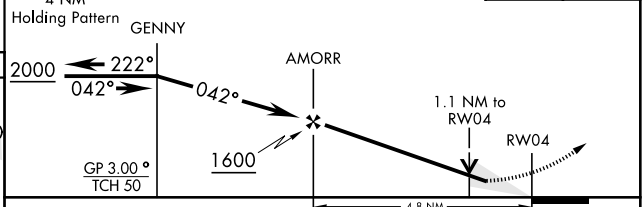


EMERG SAFE ALT 100 NM 11,100

ELEV 19	TDZE 17
---------	---------



HIRL Rwy 4-22, 13R-31L  
HIRL Rwy 13L-31R, 18-36  
REIL Rwy 4-22, 13L-31R, 18-36, 31L



CATEGORY	A	B	C	D
LNAV/VNAV DA	268- <sup>3</sup> / <sub>4</sub>		251 (300- <sup>3</sup> / <sub>4</sub> )	
LNAV MDA	420-1	403 (500-1)	420-1 <sup>1</sup> / <sub>8</sub>	403 (500-1 <sup>1</sup> / <sub>2</sub> )
CIRCLING	480-1	461 (500-1)	540-1 <sup>1</sup> / <sub>2</sub> 521 (600-1 <sup>1</sup> / <sub>2</sub> )	620-2 601 (700-2)

CORPUS CHRISTI ALTIMETER SETTING

LNAV MDA	440-1	423 (500-1)	440-1 <sup>1</sup> / <sub>4</sub>	423 (500-1 <sup>1</sup> / <sub>4</sub> )
CIRCLING	500-1 481 (500-1)	520-1 501 (600-1)	580-1 <sup>1</sup> / <sub>2</sub> 561 (600-1 <sup>1</sup> / <sub>2</sub> )	660-2 641 (700-2)

CORPUS CHRISTI, TEXAS

27°42'N-97°17'W

CORPUS CHRISTI NAS (TRUAX FLD) (KNGP)

Amtd 1 16JUL20

# RNAV (GPS) RWY 4

SC-3, 01 DEC 2022 to 29 DEC 2022

SC-3, 01 DEC 2022 to 29 DEC 2022