

TACAN Z RWY 31L

TACAN NGP Chan 87	APCH CRS 291°	Rwy Idg TDZE Arprt Elev	8002 18 19
-----------------------------	-------------------------	-------------------------------	---------------------------------------

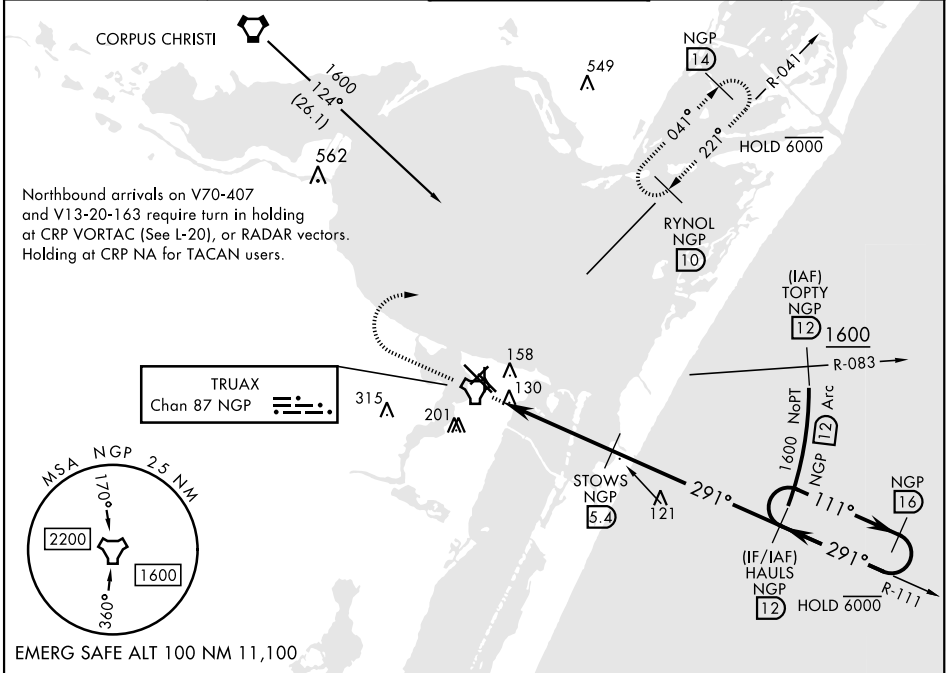
AL-98 [USN]

CORPUS CHRISTI NAS (TRUAX FLD) (KNGP)

▼ When local altimeter setting not received, use Corpus Christi altimeter setting.

MISSED APPROACH: Climb to 1600 direct NGP TACAN and turn right to intercept R-041 to RYNOL and hold.

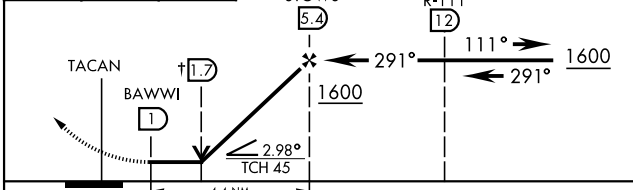
ATIS ★ 127.9 290.9	CORPUS CHRISTI APP CON 128.675 343.75	NAVY CORPUS TOWER ★ 134.85 340.2	GND CON 118.7 257.85	CLNC DEL 314.3	ASR/ PAR
------------------------------	---	--	--------------------------------	--------------------------	-------------



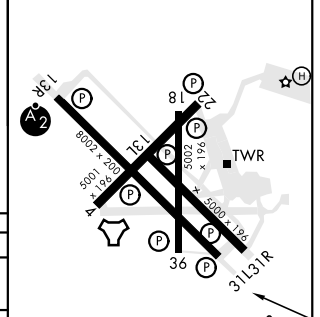
1600 NGP

↑ VDP NA when using Corpus Christi altimeter setting

NGP R-041



ELEV 19	TDZE 18
---------	---------



CATEGORY	A	B	C	D
S-31L	420-1 402 (500-1)	420-1 1/2 402 (500-1 1/2)		
CIRCLING	480-1 461 (500-1)	540-1 1/2 521 (600-1 1/2)	620-2 601 (700-2)	
CORPUS CHRISTI ALTIMETER SETTING				
S-31L	460-1 442 (500-1)	460-1 3/4 442 (500-1 3/4)		
CIRCLING	500-1 481 (500-1)	520-1 501 (600-1)	580-1 1/2 561 (600-1 1/2)	660-2 641 (700-2)

HIRL Rwy 4-22, 13R-31L

HIRL Rwy 13L-31R, 18-36

REIL Rwy 4-22, 13L-31R, 18-36, 31L

TACAN Z RWY 31L

SC-3, 01 DEC 2022 to 29 DEC 2022

SC-3, 01 DEC 2022 to 29 DEC 2022