

CORPUS CHRISTI, TEXAS

VOR/DME or TACAN Y RWY 13R

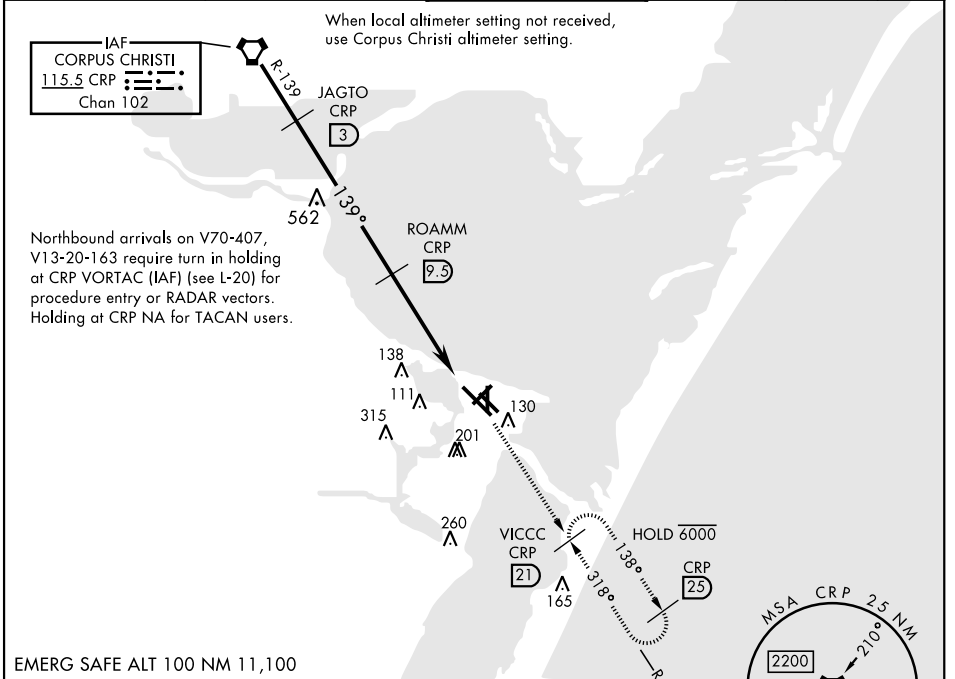
VORTAC CRP 115.5 Chan 102	APCH CRS 139°	Rwy Idg 8002 TDZE 13 Arprt Elev 19
---	-------------------------	---

AL-98 [USN]

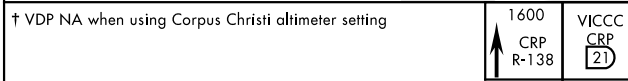
CORPUS CHRISTI NAS (TRUAX FLD) (KNGP)

<p>∇ * When ALS inop, increase CAT AB vis to 1 mile, CAT CD vis to 1½ miles. ** When ALS inop, increase CAT AB vis to 1 mile, CAT CD vis to 1¾ miles.</p>	<p>SALSF A2</p>	<p>MISSED APPROACH: Climb to 1600 on CRP VORTAC R-138 to VICCC and hold.</p>
--	----------------------------	--

<p>ATIS ★ 127.9 290.9</p>	<p>CORPUS CHRISTI APP CON 128.675 343.75</p>	<p>NAVY CORPUS TOWER ★ 134.85 340.2</p>	<p>GND CON 118.7 257.85</p>	<p>CLNC DEL 314.3</p>	<p>ASR/PAR</p>
--------------------------------------	---	--	--	----------------------------------	----------------

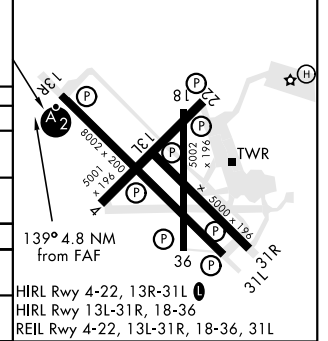


EMERG SAFE ALT 100 NM 11,100



ELEV 19	TDZE 13
---------	---------

CATEGORY	A	B	C	D
S-13R *	420-¾	407 (500-¾)	420-1	407 (500-1)
CIRCLING	480-1	461 (500-1)	540-1½ 521 (600-1½)	620-2 601 (700-2)
CORPUS CHRISTI ALTIMETER SETTING				
S-13R **	460-¾	447 (500-¾)	460-1	447 (500-1)
CIRCLING	500-1 481 (500-1)	520-1 501 (600-1)	580-1½ 561 (600-1½)	660-2 641 (700-2)



CORPUS CHRISTI, TEXAS

27°42'N-97°17'W

CORPUS CHRISTI NAS (TRUAX FLD) (KNGP)

Amdt 1 16JUL20

VOR/DME or TACAN Y RWY 13R

SC-3, 01 DEC 2022 to 29 DEC 2022

SC-3, 01 DEC 2022 to 29 DEC 2022