

OKLAHOMA CITY, OKLAHOMA

# HI-TACAN Y RWY 18

TACAN TIK Chan <b>105</b>	APCH CRS <b>176°</b>	Rwy Idg <b>11,100</b> THRE <b>1260</b> Arprt Elev <b>1291</b>
------------------------------	-------------------------	---

AL-299 [USAF]

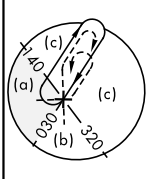
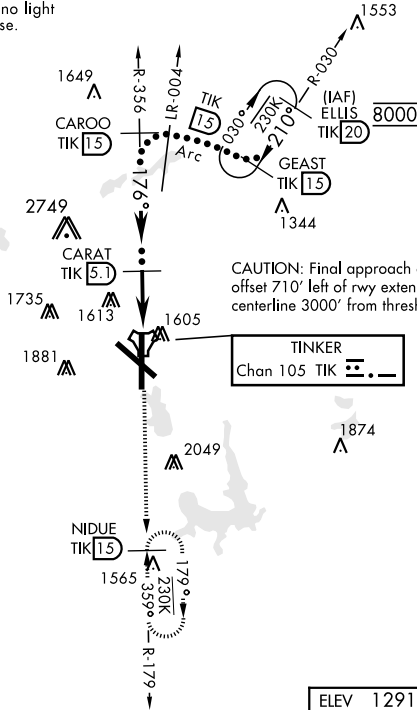
TINKER AFB (KTIK)

⚠ **\* CAT E circling not authorized in sector S of Rwy 13-31. Circling not authorized to Rwy 18.**
SALS
† MISSED APPROACH: Climb to 4000 on TIK TACAN R-179 to NIDUE and hold.

ATIS ★ <b>270.1</b>	OKE CITY APP CON <b>124.2 336.4</b>	TOWER <b>124.45 251.05</b>	GND CON <b>121.8 275.8</b>	CLNC DEL <b>119.7 335.8</b>	ASR
------------------------	--	-------------------------------	-------------------------------	--------------------------------	-----

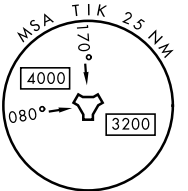
† Missed approach requires use of RNAV or ATC monitoring.

Straight-in minimum visibility increased to no light minimum due to offset final approach course.



CAUTION: Final approach course offset 710' left of rwy extended centerline 3000' from threshold.

TINKER  
Chan 105 TIK [dot-dot-dot-dot]



EMERG SAFE ALT 100 NM 4700

CATEGORY	C	D	E
	S-18 1960-1¾ 669 (700-1¾)	460 1960-2 669 (700-2)	(500-1) 1960-2¼ 669 (700-2¼)

ELEV 1291	THRE 1260
HIRL all rwys	

OKLAHOMA CITY, OKLAHOMA

35°25'N-97°23'W

TINKER AFB (KTIK)

Amtd 4 23APR20

# HI-TACAN Y RWY 18

SC-1, 01 DEC 2022 to 29 DEC 2022

SC-1, 01 DEC 2022 to 29 DEC 2022