

OKLAHOMA CITY, OKLAHOMA

RNAV (GPS) RWY 18

APCH CRS	Rwy Idg	11,100
176°	THRE	1260
	Arpt Elev	1291

AL-299 (USAF)

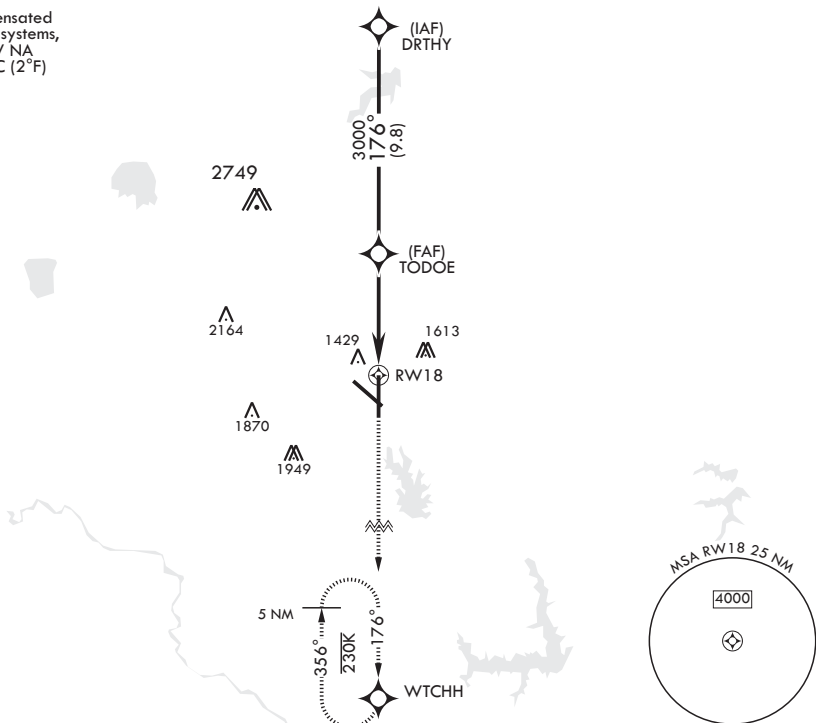
TINKER AFB (KTIK)

⚠ * Cat E Circling not authorized in sector S of Rwy 13-31 and W of Rwy 18-36. **SALSF** MISSED APPROACH: Climb to 4000 direct WTCHH waypoint and hold. **A2**

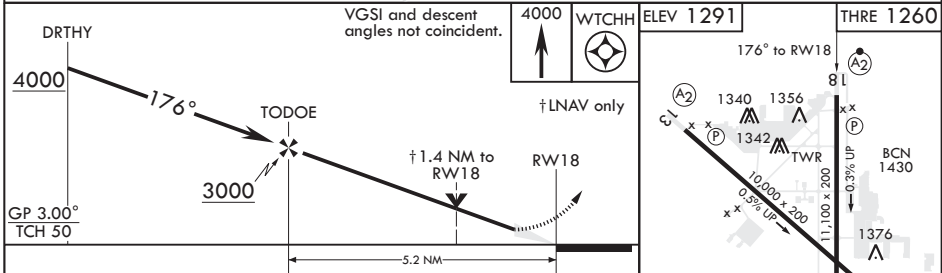
ATIS★	OKC CITY APP CON/DEP CON	TOWER	GND CON	CLNC DEL	ASR
270.1	124.2 336.4	124.45 251.05	121.8 275.8	119.7 335.8	

DME/DME RNP-0.3 NA

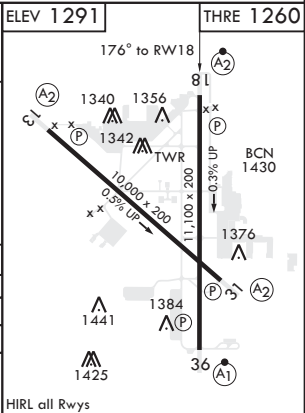
For uncompensated Baro-VNAV systems, LNAV/VNAV NA below -17°C (2°F)



EMERG SAFE ALT 100 NM 4700



CATEGORY	A	B	C	D	E
LNAV/VNAV DA	1720-1¼		460	(500-1¼)	
LNAV MDA	1720/40	460 (500-¾)	1720/55	460	(500-1)
CIRCLING*	1820-1 529 (600-1)		2000-2 709 (800-2)	2040-2½ 749 (800-2½)	2040-2¾ 749 (800-2¾)



OKLAHOMA CITY, OKLAHOMA

35°25'N - 97°23'W

TINKER AFB (KTIK)

Orig 14SEP17

RNAV (GPS) RWY 18

SC-1, 01 DEC 2022 to 29 DEC 2022

SC-1, 01 DEC 2022 to 29 DEC 2022