

# VOR/DME RWY 13

VOR/DME PWA <b>113.4</b> Chan <b>81</b>	APCH CRS <b>110°</b>	Rwy Idg <b>10,000</b> TDZE <b>1241</b> Arpt Elev <b>1291</b>
---	-------------------------	--

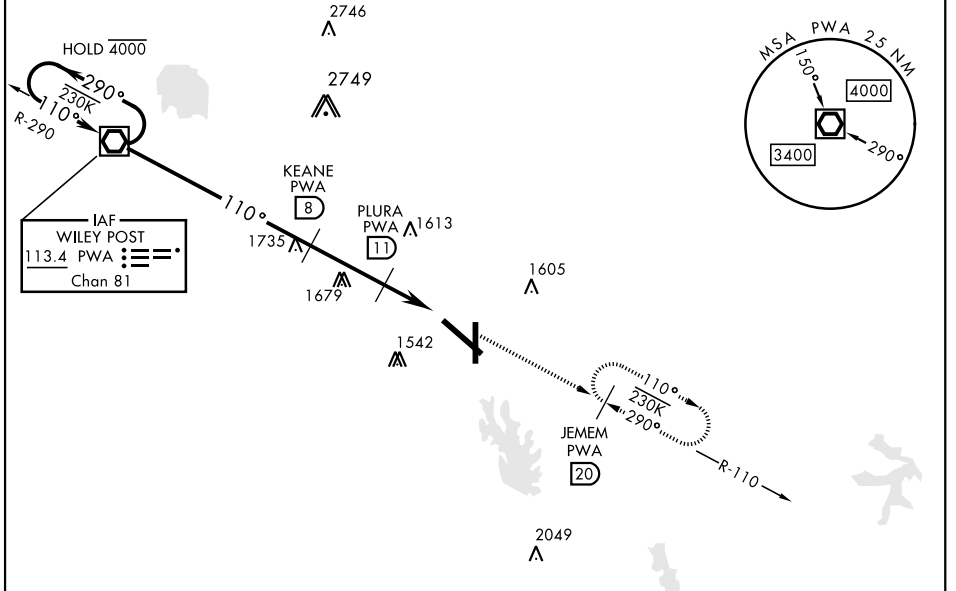
AL-299 [USAF]

TINKER AFB (KTIK)

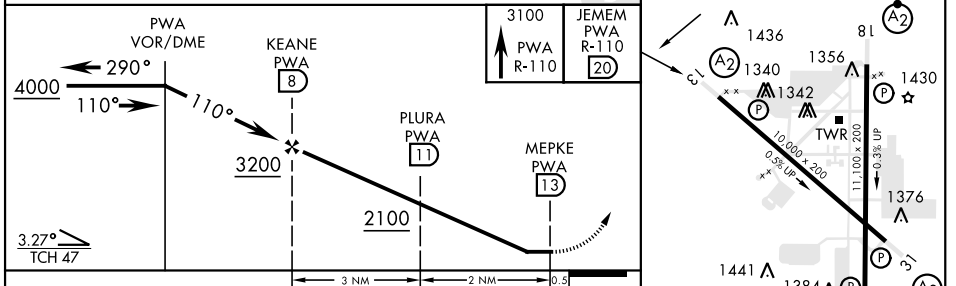
<p>▼ * When ALS inop, increase CAT AB RVR to 50 and vis to 1 mile, CAT C vis to 1 1/4 miles, CAT D vis to 2 miles, CAT E vis to 2 1/4 miles. ** CAT E Circling not authorized in sector S of Rwy 13-31 and W of Rwy 18-36.</p>	<p>SALS <b>(A2)</b></p>	<p>MISSED APPROACH: Climb to 3100 direct to PWA R-110/20 DME (JEMEM) and hold.</p>
--	-----------------------------	--

ATIS * <b>270.1</b>	OKE CITY APP CON <b>124.2 336.4</b>	TOWER <b>124.45 251.05</b>	GND CON <b>121.8 275.8</b>	CLNC DEL <b>119.7 335.8</b>	ASR
------------------------	--	-------------------------------	-------------------------------	--------------------------------	-----

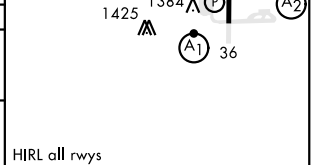
CAUTION: VFR flyway west of TIK, sfc to 3000



ELEV 1291	TDZE 1241
-----------	-----------



CATEGORY	A	B	C	D	E
S-13 *	1900/40 659 (700-3/4)		1900-1 1/2 659 (700-1 1/2)	1900-1 3/4 659 (700-1 3/4)	1900-2 659 (700-2)
CIRCLING **	1900-1 609 (700-1)		1900-1 3/4 609 (700-1 3/4)	1980-2 1/4 689 (700-2 1/4)	2040-2 3/4 749 (800-2 3/4)



# VOR/DME RWY 13

SC-1, 01 DEC 2022 to 29 DEC 2022

SC-1, 01 DEC 2022 to 29 DEC 2022