


WAAS CH 81807 W36A	APP CRS 356°	Rwy Idg 7339 TDZE 1066 Apt Elev 1087
--	------------------------	---

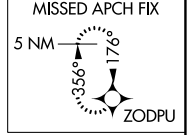
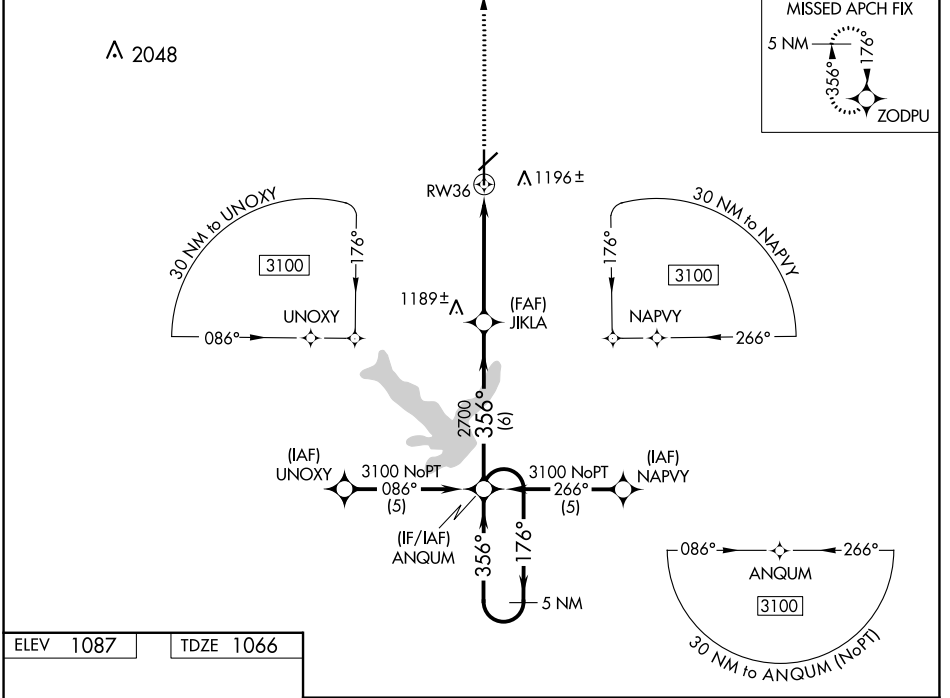
RNAV (GPS) RWY 36

NEW CENTURY AIRCENTER (IXD)

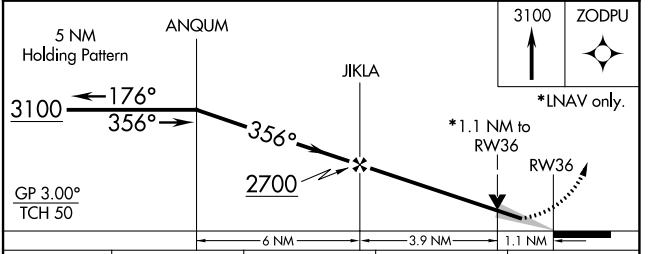
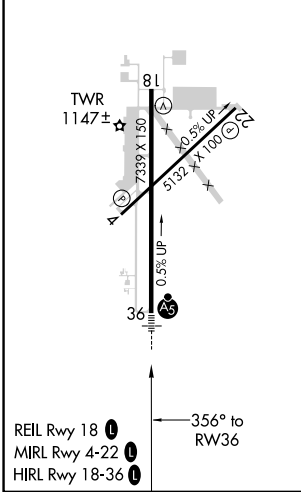
⚠ DME/DME RNP-0.3 NA. For inop MALS, increase LNAV Cat D visibility to 1 1/4 and LPV visibility to 1 all Cats. If local altimeter setting not received, use Johnson County Exec altimeter setting and increase all DA/MDAs 20 feet. VDP NA with Johnson County Exec altimeter setting.

MALS

MISSED APPROACH: Climb to 3100 direct ZODPU and hold.

ASOS 135.325	KANSAS CITY APP CON 118.9 251.075	NEW CENTURY TOWER * 133.0 (CTAF) 0	GND CON 124.3	UNICOM 122.95
------------------------	---	--	-------------------------	-------------------------



ELEV 1087	TDZE 1066
------------------	------------------



CATEGORY	A	B	C	D
LPV DA	1316-1/2 250 (300-1/2)			
LNAV/VNAV DA	NA			
LNAV MDA	1440-1/2 374 (400-1/2)		1440-1 374 (400-1)	
C CIRCLING	1560-1 473 (500-1)		1580-1/2 493 (500-1/2) 1640-2 553 (600-2)	

NC-2, 01 DEC 2022 to 29 DEC 2022

NC-2, 01 DEC 2022 to 29 DEC 2022