

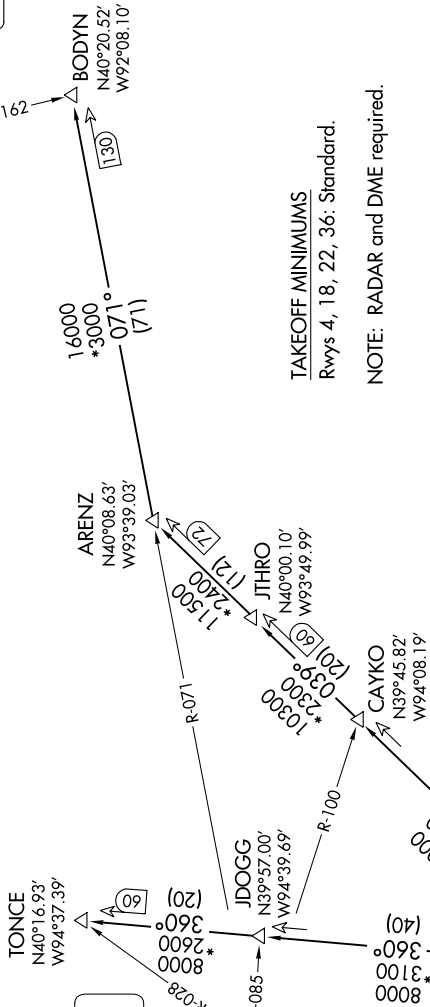
NC-2, 01 DEC 2022 to 29 DEC 2022

KANSAS CITY DEP CON  
118.9 251.075

ST. JOSEPH  
115.5 STJ  
Chan 102

KANSAS CITY  
113.25 MCI  
Chan 79(Y)

OTTUMWA  
111.6 OTM  
Chan 53



TAKEOFF MINIMUMS

Rwys 4, 18, 22, 36: Standard.

NOTE: RADAR and DME required.

DEPARTURE ROUTE DESCRIPTION

TAKEOFF ALL RUNWAYS: Climb on assigned heading for RADAR vectors to appropriate route. Expect filed altitude 10 minutes after departure.

ARENZ TRANSITION (ROYAL9.ARENZ): From over MCI VORTAC on MCI R-039 to ARENZ.

BODYN TRANSITION (ROYAL9.BODYN): From over MCI VORTAC on MCI R-039 to ARENZ, then on STJ R-071 to BODYN.

TONCE TRANSITION (ROYAL9.TONCE): From over MCI VORTAC on MCI R-360 to TONCE.

NOTE: Chart not to scale.

NC-2, 01 DEC 2022 to 29 DEC 2022