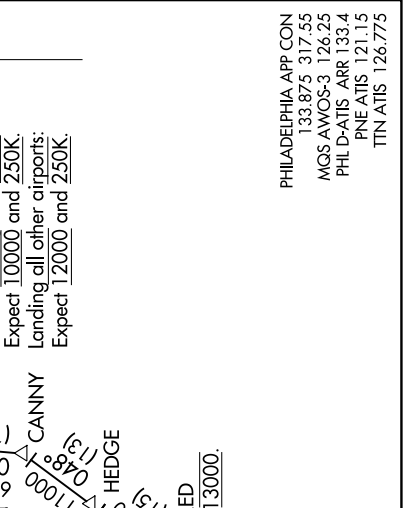
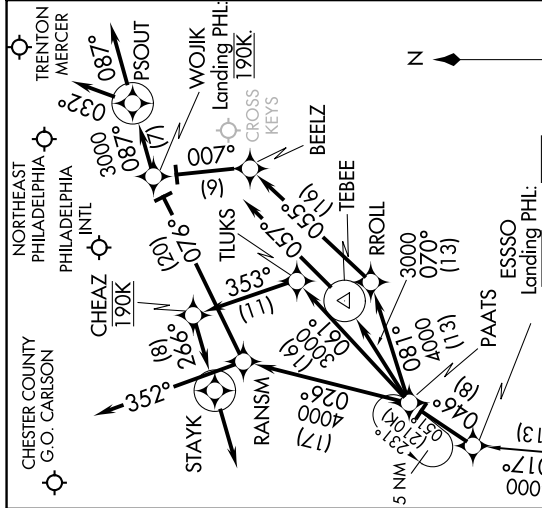


# PAATS THREE ARRIVAL (RNAV)

PHILADELPHIA, PENNSYLVANIA

NE-4, 01 DEC 2022 to 29 DEC 2022



PHILADELPHIA APP CON  
133.875 317.55  
MQS AMWOS-3 126.25  
PHL D-ATIS ARR 133.4  
PNE ATIS 121.15  
ITTN ATIS 126.775

**ARRIVAL ROUTE DESCRIPTION**

**FLAT ROCK TRANSITION (FAK.PAATS3):**  
**GORDONSVILLE TRANSITION (GVE.PAATS3):**  
**PATUXENT TRANSITION (PXT.PAATS3):**

From over ESSO on track 046° to PAATS thence....

Landing MQS: From over PAATS on track 026° to RANSM, then on heading 352°. Expect RADAR vectors to final approach course.

Landing PNE, ITIN: From over PAATS on track 026° to RANSM, then on track 076° to WOJJK, then on track 087° to PSOUT, then on heading 032°. Expect RADAR vectors to final approach course.

Landing PHL Rwy 9L, 9R: From over PAATS on track 061° to TLUKS, then on track 353° to cross CHEAZ at 190K, then on track 266° to STAYK, then on track 266°. Expect RADAR vectors to final approach course.

Landing PHL Rwy 17, 35: From over PAATS on track 070° to TEBEE, then on heading 057°. Expect RADAR vectors to final approach course.

Landing PHL Rwy 26, 27L, 27R: From over PAATS on track 081° to RROLL, then on track 055° to BEELZ, then on track 007° to cross WOJJK at 190K, then on track 087° to PSOUT, then on track 087°. Expect RADAR vectors to final approach course.

**NOTE:** DME/DME/IRU or GPS required.  
**NOTE:** RNAV 1.  
**NOTE:** For turbojets only.  
**NOTE:** PXT transition as assigned by ATC.  
**NOTE:** RADAR required.  
**NOTE:** CAUTION: Parachute Jumping 3.3 NM NE BEELZ, 1.5 NM radius Cross Keys Airport AOB 13,500 (SR-SS).

# PAATS THREE ARRIVAL (RNAV)

PHILADELPHIA, PENNSYLVANIA

NE-4, 01 DEC 2022 to 29 DEC 2022

NOTE: Chart not to scale.