

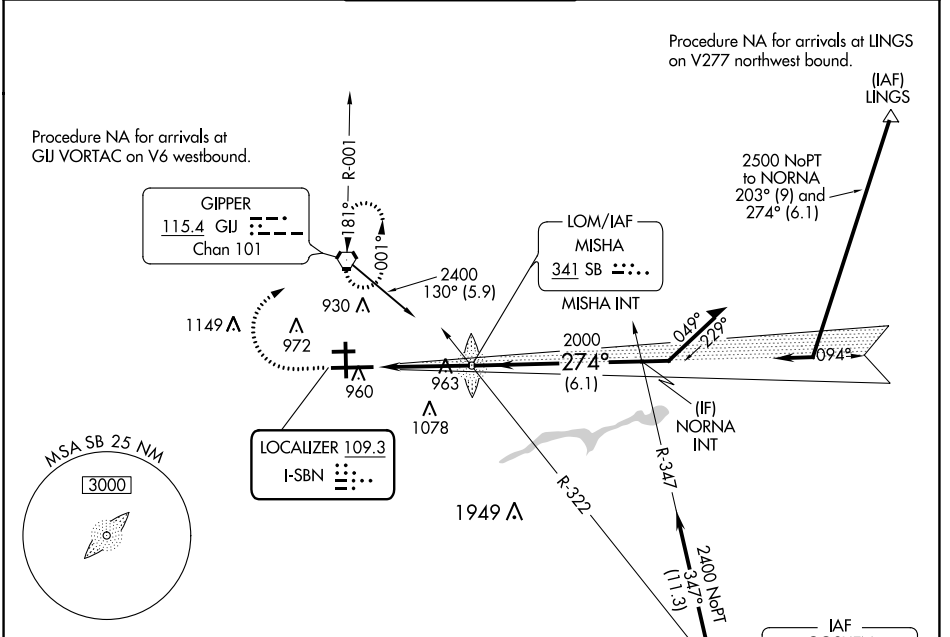
LOC I-SBN 109.3	APP CRS 274°	Rwy Idg TDZE Apt Elev	8412 774 798
---------------------------	------------------------	-----------------------------	---

ILS RWY 27L (SA CAT I & II)

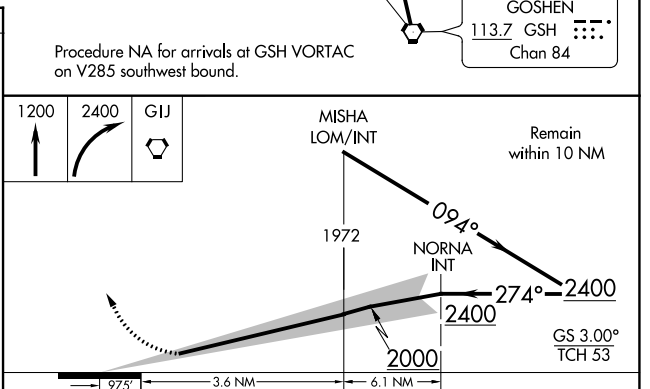
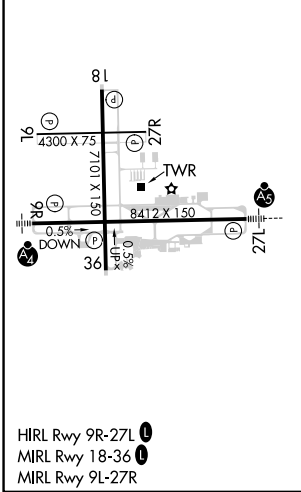
SOUTH BEND INTL (SBN)

<p>SA Cat I: Requires specific OPSPEC, MSPEC, or LOA approval and use of HUD to DH. SA Cat II: Reduced lighting: Requires specific OPSPEC, MSPEC, or LOA approval and use of Autoland or HUD to touchdown.</p>	<p>MALS R</p>	<p>MISSED APPROACH: Climb to 1200 then climbing right turn to 2400 direct GU VORTAC and hold.</p>
--	---------------	---

<p>ATIS 120.675</p>	<p>SOUTH BEND APP CON * 118.55 257.8</p>	<p>SOUTH BEND TOWER * 135.675 (CTAF) 0 257.8</p>	<p>GND CON 121.7</p>	<p>CLNC DEL 121.9</p>
--------------------------------	---	---	---------------------------------	----------------------------------



ELEV 798	D	TDZE 774
----------	----------	----------



CATEGORY	A	B	C	D
S-ILS 27L	SA CAT I	RA 179/14	150 DA 924	
S-ILS 27L	SA CAT II	RA 114/12	100 DA 874	

SA CATEGORY I & II ILS SPECIAL AIRCREW & AIRCRAFT CERTIFICATION REQUIRED

EC-2, 01 DEC 2022 to 29 DEC 2022

EC-2, 01 DEC 2022 to 29 DEC 2022