

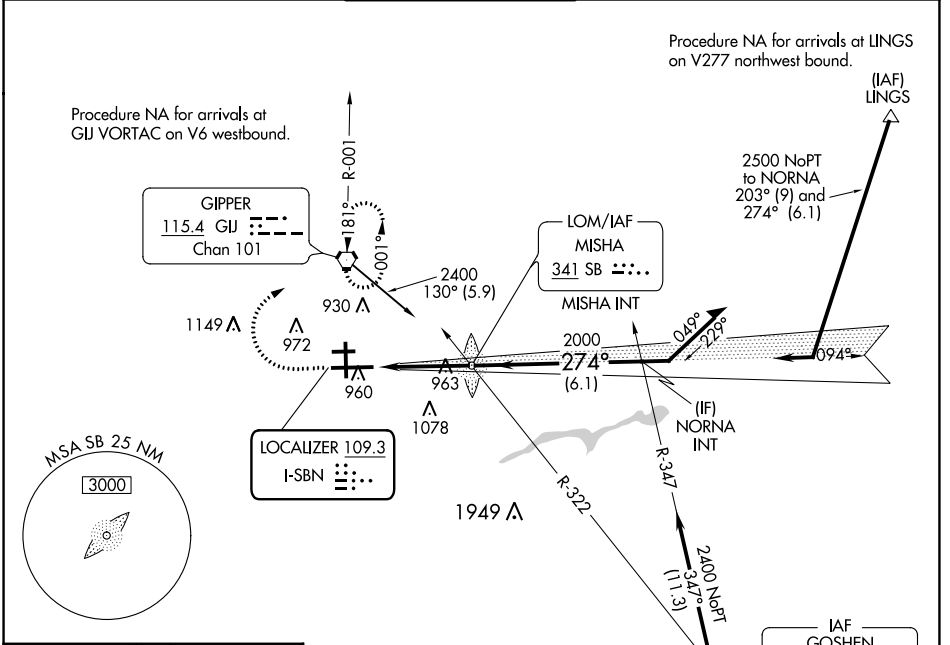
LOC I-SBN <b>109.3</b>	APP CRS <b>274°</b>	Rwy ldg TDZE Apt Elev	<b>8412</b> <b>774</b> <b>798</b>
---------------------------	------------------------	-----------------------------	---

# ILS or LOC RWY 27L

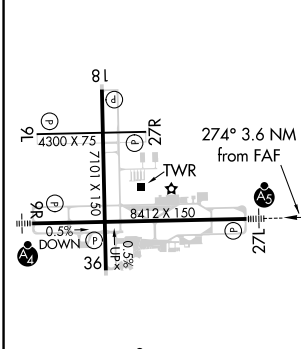
SOUTH BEND INTL (SBN)

<p>▼ *RVR 1800 authorized with the use of FD or AP ▲ or HUD to DA.</p>	<p>MALSR</p>	<p>MISSED APPROACH: Climb to 1200 then climbing right turn to 2400 direct GIJ VORTAC and hold.</p>
--	--------------	--

<p>ATIS <b>120.675</b></p>	<p>SOUTH BEND APP CON * <b>118.55 257.8</b></p>	<p>SOUTH BEND TOWER * <b>135.675 (CTAF) 257.8</b></p>	<p>GND CON <b>121.7</b></p>	<p>CLNC DEL <b>121.9</b></p>
--------------------------------	---	---	---------------------------------	----------------------------------



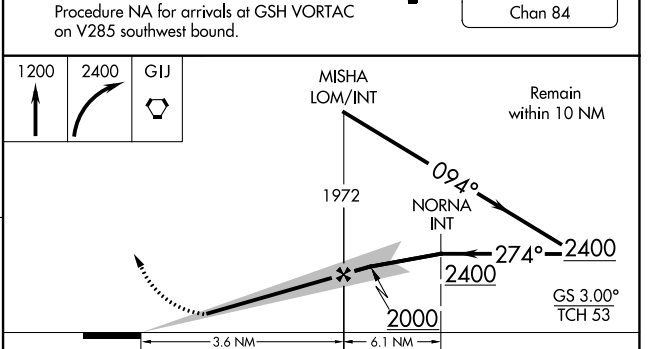
ELEV 798	<b>D</b>	TDZE 774
----------	----------	----------



HIRL Rwy 9R-27L  
MIRL Rwy 18-36  
MIRL Rwy 9L-27R

FAF to MAP 3.6 NM

Knots	60	90	120	150	180
Min:Sec	3:36	2:24	1:48	1:26	1:12



CATEGORY	A	B	C	D
S-ILS 27L *	974/24 200 (200-½)			
S-LOC 27L	1220/24	446 (500-½)	1220/45	446 (500-¾)
<input checked="" type="checkbox"/> CIRCLING	1280-1	482 (500-1)	1440-1¾ 642 (700-1¾)	1500-2¼ 702 (800-2¼)

EC-2, 01 DEC 2022 to 29 DEC 2022

EC-2, 01 DEC 2022 to 29 DEC 2022