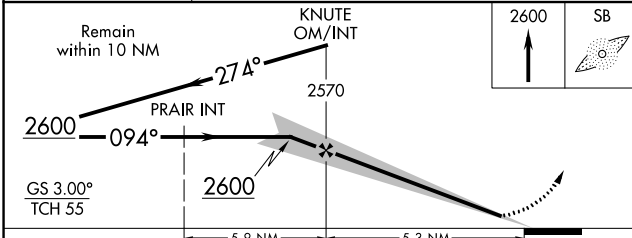
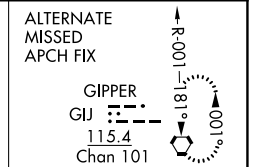
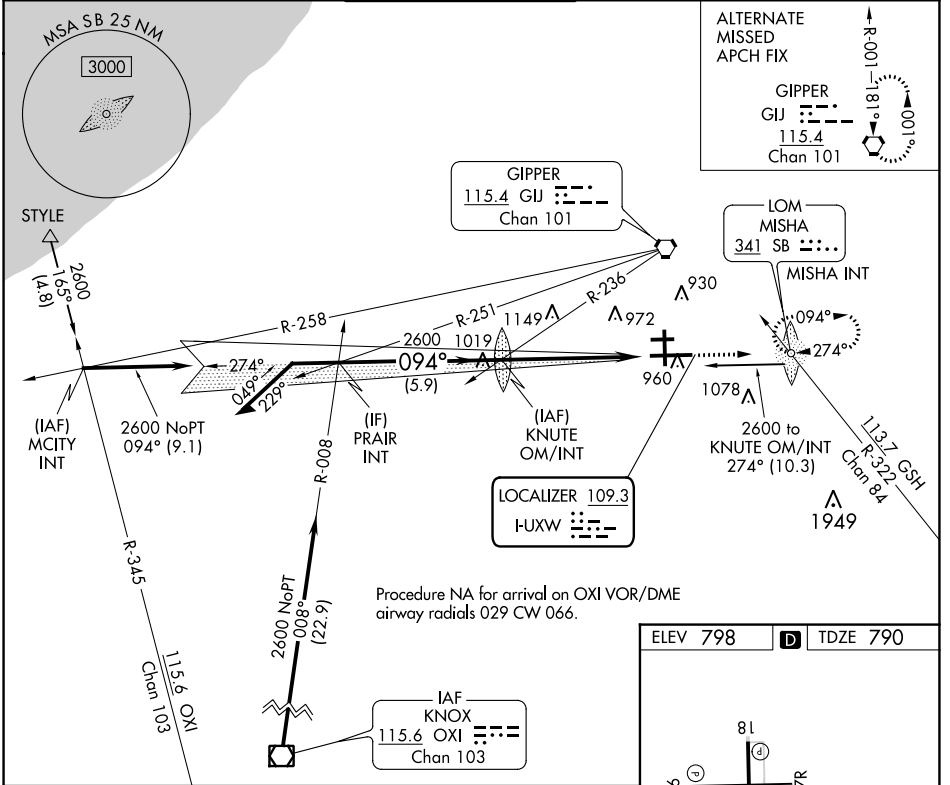


| | | |
|---------------------------|------------------------|------------------------|
| LOC I-UXW 109.3 | APP CRS 094° | Rwy Idg 8412 |
| | | TDZE 790 |
| | | Apt Elev 798 |

ILS or LOC RWY 9R

SOUTH BEND INTL (SBN)

| | | | | |
|---|--|--|---|--------------------------|
| ADF required. | | MALSF | MISSED APPROACH: Climb to 2600 direct MISHA LOM/INT and hold. | |
| ▼ Rwy 9R helicopter visibility reduction below 3/4 SM NA. ▲ Inop table does not apply to S-ILS 9R all Cats. For inop ALS, increase S-LOC 9R Cats C/D visibility to RVR 6000. | | | | |
| ATIS 120.675 | SOUTH BEND APP CON* 118.55 257.8 | SOUTH BEND TOWER* 135.675 (CTAF) 257.8 | GND CON 121.7 | CLNC DEL 121.9 |



| | |
|----------|----------|
| ELEV 798 | TDZE 790 |
|----------|----------|

81

76

4300 X 75

27R

TWR

8412 X 150

0.5% DOWN

36

27L

094° 5.3 NM from FAF

HIRL Rwy 9R-27L
MIRL Rwy 18-36
MIRL Rwy 9L-27R

FAF to MAP 5.3 NM

| | | | | | |
|---------|------|------|------|------|------|
| Knots | 60 | 90 | 120 | 150 | 180 |
| Min:Sec | 5:18 | 3:32 | 2:39 | 2:07 | 1:46 |

| CATEGORY | A | B | C | D |
|----------|--------------------|---------------|-------------------------------|-------------------------------|
| S-ILS 9R | 990/40 | | 200 (200-3/4) | |
| S-LOC 9R | 1200/40 | 410 (500-3/4) | 1200/50 | 410 (500-1) |
| CIRCLING | 1280-1 482 (500-1) | | 1440-1 3/4 642 (700-1 3/4) | 1500-2 1/4 702 (800-2 1/4) |

EC-2, 01 DEC 2022 to 29 DEC 2022

EC-2, 01 DEC 2022 to 29 DEC 2022