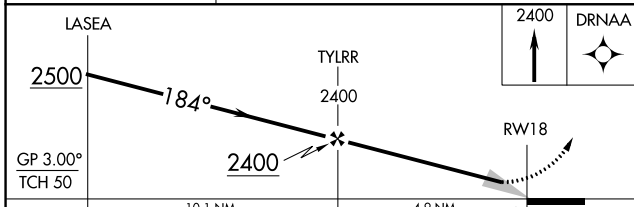
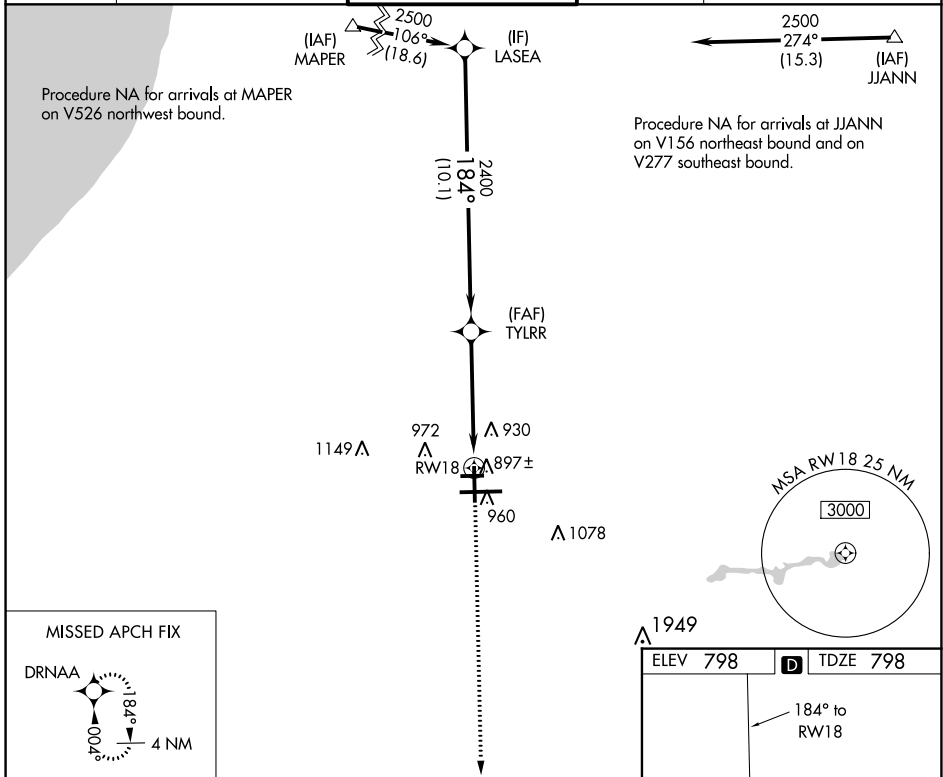


WAAS CH 73021 W18A	APP CRS 184°	Rwy Idg TDZE Apt Elev	7101 798 798
--	------------------------	-----------------------------	---

RNAV (GPS) RWY 18

SOUTH BEND INTL (SBN)

RNP APCH - GPS.		MISSED APPROACH: Climb to 2400 direct DRNAA and hold.		
<p>▼ For uncompensated Baro-VNAV systems, LNAV/VNAV NA below -19°C or above 54°C.</p>				
ATIS 120.675	SOUTH BEND APP CON* 118.55 257.8	SOUTH BEND TOWER* 135.675 (CTAF) 257.8	GND CON 121.7	CLNC DEL 121.9



ELEV 798	TDZE 798
----------	----------

184° to RWY 18

81

16

4300 X 75

27R

TWR

8412 X 150

9R

0.5% DOWN

36

0.5%

27L

HIRL Rwy 9R-27L

MIRL Rwy 18-36

MIRL Rwy 9L-27R

CATEGORY	A	B	C	D
LPV DA		1048-1	250 (300-1)	
LNAV/VNAV DA		1057-1	259 (300-1)	
LNAV MDA		1160-1	362 (400-1)	
CIRCLING	1280-1	482 (500-1)	1440-1¾ 642 (700-1¾)	1500-2¼ 702 (800-2¼)