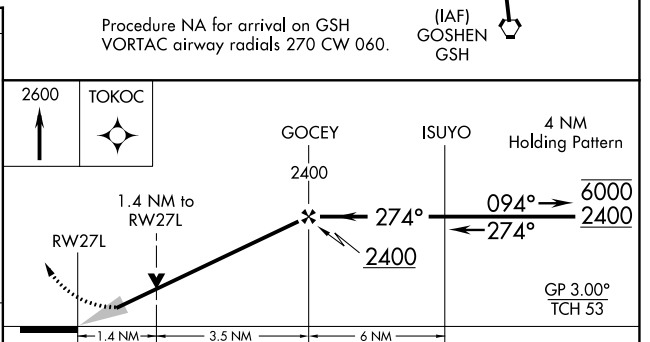
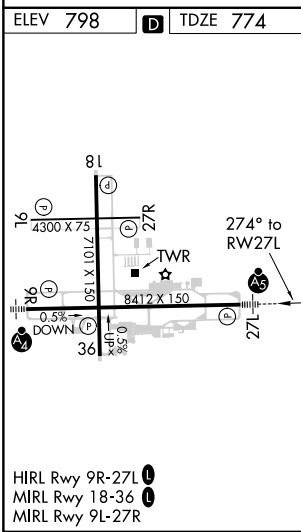
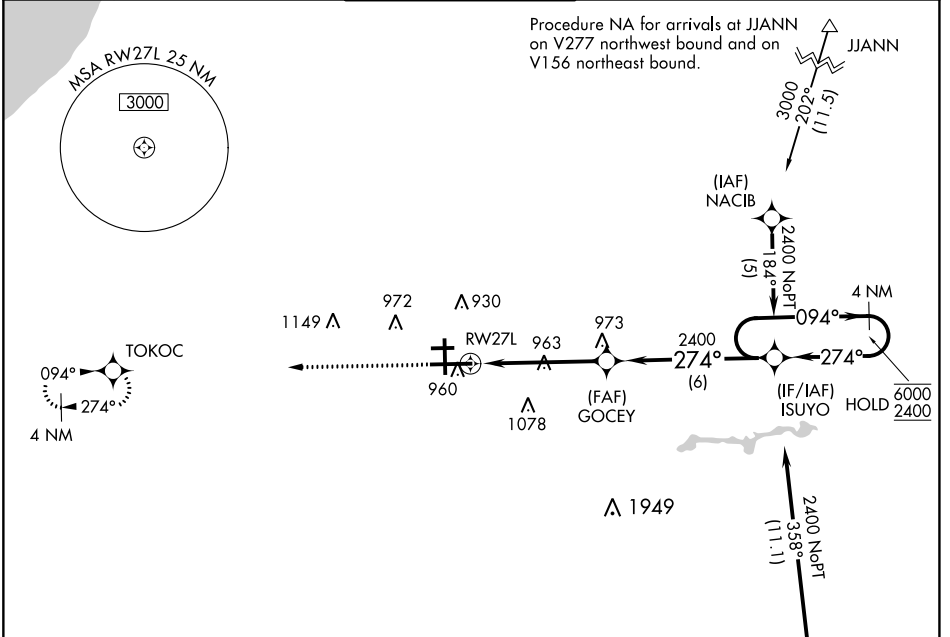


WAAS CH <b>50108</b> <b>W27A</b>	APP CRS <b>274°</b>	Rwy Idg <b>8412</b> TDZE <b>774</b> Apt Elev <b>798</b>
--	------------------------	---

# RNAV (GPS) RWY 27L

SOUTH BEND INTL (SBN)

RNP APCH - GPS.		MALSR	MISSED APPROACH: Climb to 2600 direct TOKOC and hold.	
<p>▼ For uncompensated Baro-VNAV systems, LNAV/VNAV NA below -19°C or above 54°C. For inop ALS, increase LNAV Cat C/D visibility to 1 3/8 SM.</p>				
ATIS <b>120.675</b>	SOUTH BEND APP CON * <b>118.55 257.8</b>	SOUTH BEND TOWER * <b>135.675 (CTAF) 0 257.8</b>	GND CON <b>121.7</b>	CLNC DEL <b>121.9</b>



CATEGORY	A	B	C	D
LPV DA		1030/24	256 (300-1/2)	
LNAV/VNAV DA		1160/40	386 (400-3/4)	
LNAV MDA	1260/24	486 (500-1/2)	1260/50	486 (500-1)
CIRCLING	1280-1	482 (500-1)	1440-1 3/4 642 (700-1 1/4)	1500-2 1/4 702 (800-2 1/4)

EC-2, 01 DEC 2022 to 29 DEC 2022

EC-2, 01 DEC 2022 to 29 DEC 2022