

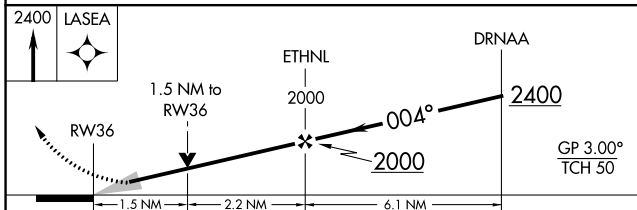
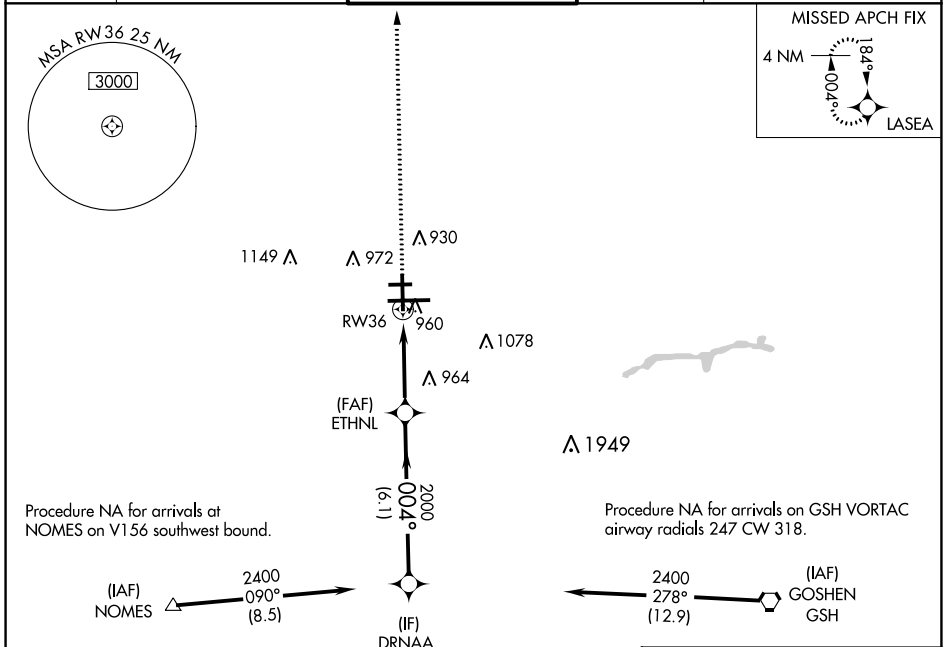
WAAS CH 69514 W36A	APP CRS 004°	Rwy Idg 7101 TDZE 778 Apt Elev 798
--	------------------------	---

RNAV (GPS) RWY 36

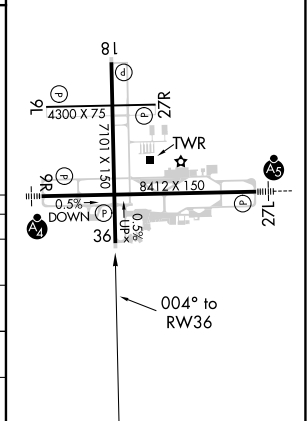
SOUTH BEND INTL (SBN)

RNP APCH - GPS.		MISSED APPROACH: Climb to 2400 direct LASEA and hold.		
For uncompensated Baro-VNAV systems, procedure NA below -16°C or above 46°C.				

ATIS 120.675	SOUTH BEND APP CON * 118.55 257.8	SOUTH BEND TOWER * 135.675 (CTAF) 0 257.8	GND CON 121.7	CLNC DEL 121.9
------------------------	---	---	-------------------------	--------------------------



ELEV 798	D TDZE 778
HIRL Rwy 9R-27L 1	
MIRL Rwy 18-36 1	
MIRL Rwy 9L-27R	



CATEGORY	A	B	C	D
LPV DA	1028-1		250 (300-1)	
LNAV/ VNAV DA	1230-1 $\frac{3}{4}$		452 (500-1 $\frac{3}{4}$)	
LNAV MDA	1280-1	502 (500-1)	1280-1 $\frac{1}{2}$	502 (500-1 $\frac{1}{2}$)
C CIRCLING	1280-1	482 (500-1)	1440-1 $\frac{3}{4}$ 642 (700-1 $\frac{3}{4}$)	1500-2 $\frac{1}{4}$ 702 (800-2 $\frac{1}{4}$)

EC-2, 01 DEC 2022 to 29 DEC 2022

EC-2, 01 DEC 2022 to 29 DEC 2022