

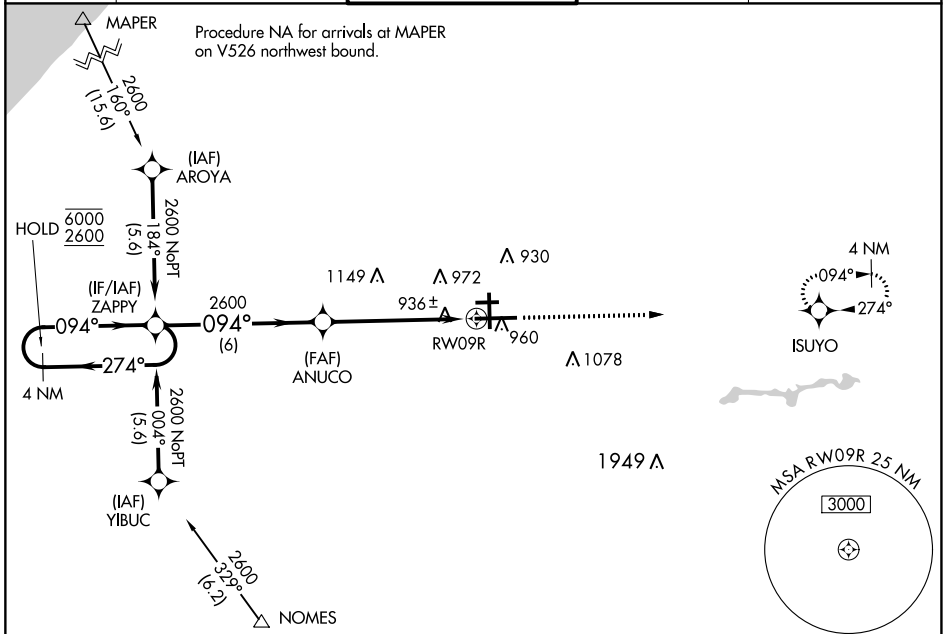
WAAS CH 60908 W09B	APP CRS 094°	Rwy Idg TDZE 790 Apt Elev 798	8412
--	------------------------	---	-------------

RNAV (GPS) RWY 9R

SOUTH BEND INTL (SBN)

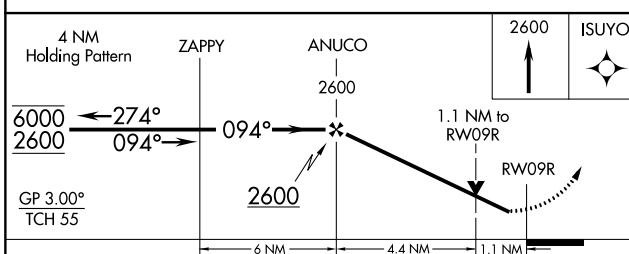
RNP APCH - GPS.			MALSF	MISSED APPROACH: Climb to 2600 direct ISUYO and hold.
▼ Rwy 9R helicopter visibility reduction below 3/4 SM NA. Inop table does not apply to LPV all Cats. For uncompensated Baro-VNAV systems, LNAV/VNAV NA below -19°C or above ▲ 54°C. For inop ALS, increase LNAV Cat A/B visibility to RVR 5500 and Cat C/D to RVR 6000.				

ATIS 120.675	SOUTH BEND APP CON ★	SOUTH BEND TOWER ★	GND CON 121.7	CLNC DEL 121.9
	118.55 257.8	135.675 (CTAF) 257.8		



Procedure NA for arrivals at MAPER on V526 northwest bound.

Procedure NA for arrivals at NOMES on V8-92-126 eastbound and V156 southwest bound.



ELEV 798	TDZE 790
----------	----------

HIRL Rwy 9R-27L MIRL Rwy 18-36 MIRL Rwy 9L-27R
--

EC-2, 01 DEC 2022 to 29 DEC 2022

EC-2, 01 DEC 2022 to 29 DEC 2022