

LOC/DME I-VCT 111.5 Chan 52	APP CRS 128°	Rwy Idg 9111 TDZE 115 Apt Elev 115
---	------------------------	---

ILS or LOC RWY 13

VICTORIA RGNL (VCT)

DME required.

▽
▲

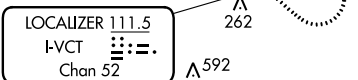
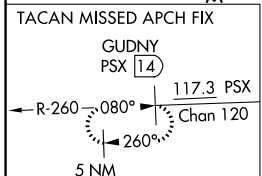
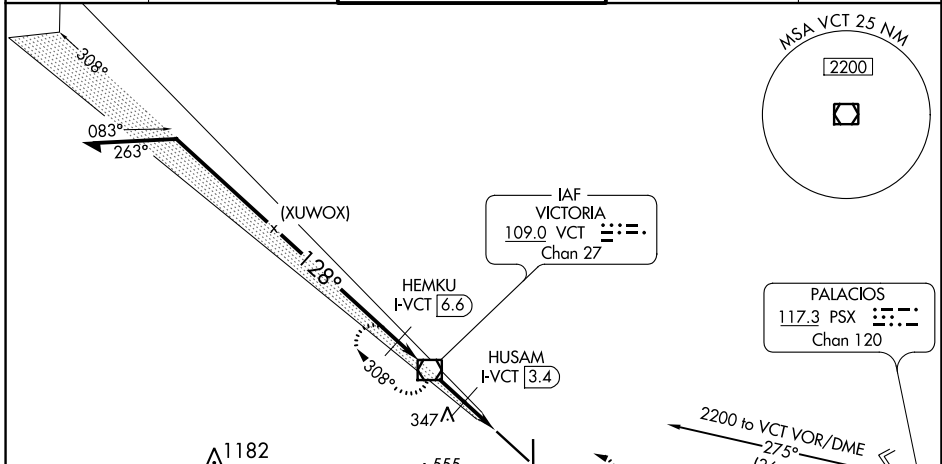
For inop ALS, increase S-ILS 13 Cat E visibility to ¾ SM and S-LOC 13 Cat E visibility to 1 SM.

MALSR

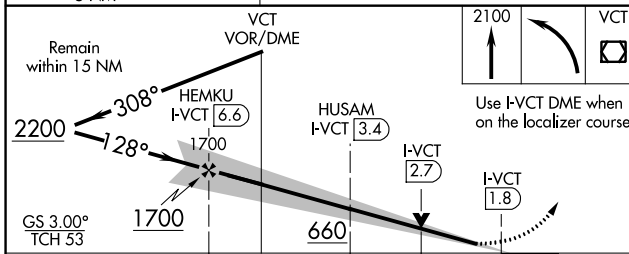


MISSED APPROACH: Climb to 2100 then left turn direct VCT VOR/DME and hold. (TACAN aircraft climb to 2100 then left turn on heading 120° and on PSX VORTAC R-260 to GUDNY/PSX 14 DME and hold W, RT, 080° inbound).

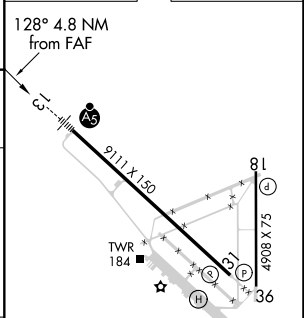
ATIS 119.025	HOUSTON CENTER 135.05 353.6	VICTORIA TOWER ★ 126.075 (CTAF) 257.95	GND CON 120.525 239.25	UNICOM 122.7
------------------------	---------------------------------------	--	----------------------------------	------------------------



Procedure NA for arrival on PSX VORTAC airway radials 218 CW 233.



ELEV 115	D	TDZE 115
----------	----------	----------



CATEGORY	A	B	C	D	E
S-ILS 13		315-½	200 (200-½)		
S-LOC 13		440-½	325 (400-½)		
C CIRCLING	580-1	465 (500-1)	820-2 705 (800-2)	880-2½ 765 (800-2½)	NA



MIRL Rwy 18-36
 REIL Rwy 18 and 36
 HIRL Rwy 13-31

SC-5, 01 DEC 2022 to 29 DEC 2022

SC-5, 01 DEC 2022 to 29 DEC 2022