

VOR/DME VCT	APP CRS	Rwy Idg	9111
109.0	127°	TDZE	115
Chan 27		Apt Elev	115

VOR RWY 13

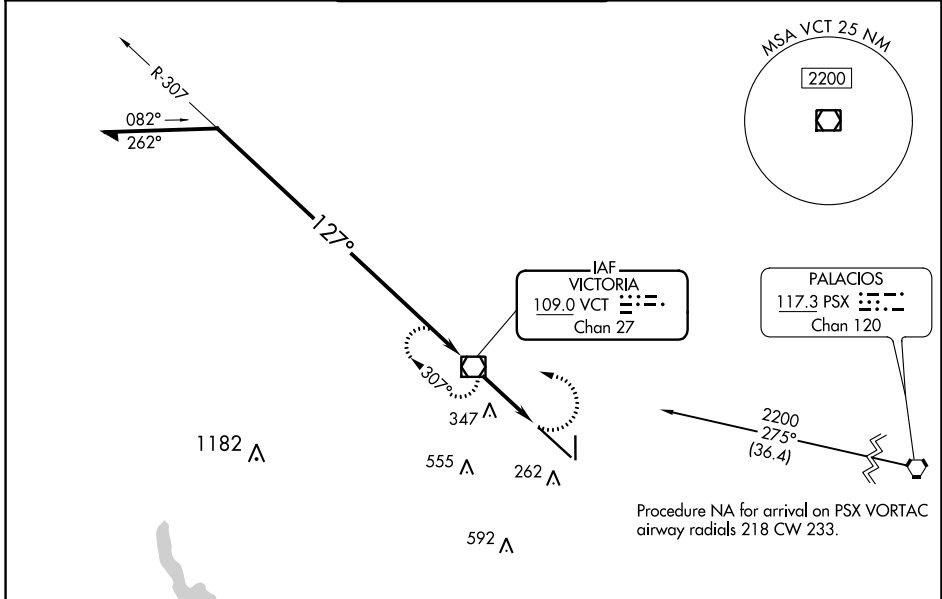
VICTORIA RGNL (VCT)

For inop ALS, increase Cat C/D/E visibility to 1 3/8 SM.

MALSR

MISSED APPROACH:
Climbing left turn to 2200
direct VCT VOR/DME and
hold, continue climb-in-hold
to 2200.

ATIS 119.025	HOUSTON CENTER 135.05 353.6	VICTORIA TOWER ★ 126.075 (CTAF) 0 257.95	GND CON 120.525 239.25	UNICOM 122.7
-----------------	--------------------------------	---	---------------------------	-----------------



ELEV 115	D	TDZE 115
----------	---	----------

Detailed approach diagram showing the final 3.2 NM from the FAF. The heading is 127°. Key features include TWR 184, 2111 X 130, 4908 X 75, 8L, and 36. The diagram also shows the MIRA, REIL, and HIRL lights for Runway 13-31.

MIRA Rwy 18-36
REIL Rwy 18 and 36
HIRL Rwy 13-31

FAF to MAP 3.2 NM					
Knots	60	90	120	150	180
Min:Sec	3:12	2:08	1:36	1:17	1:04

Remain within 15 NM	VCT VOR/DME	2200	VCT
2200	307°	127°	1300
	3.31 TCH 53	VCT 2	VCT 3.2
	2 NM	1.2 NM	

CATEGORY	A	B	C	D	E
S-13	600-1/2	485 (500-1/2)	600-1	485 (500-1)	
CIRCLING	600-1	485 (500-1)	820-2 705 (800-2)	880-2 1/2 765 (800-2 1/2)	NA

SC-5, 01 DEC 2022 to 29 DEC 2022

SC-5, 01 DEC 2022 to 29 DEC 2022