

|                         |                        |                             |   |
|-------------------------|------------------------|-----------------------------|---|
| WAAS<br>CH <b>86405</b> | APP CRS<br><b>204°</b> | Rwy Idg<br>TDZE<br>Apt Elev | <b>8919</b><br><b>270</b><br><b>270</b> |
| <b>W20A</b>             |                        |                             |   |

# RNAV (GPS) RWY 20

WESTFIELD-BARNES RGNL (B.A.F.)

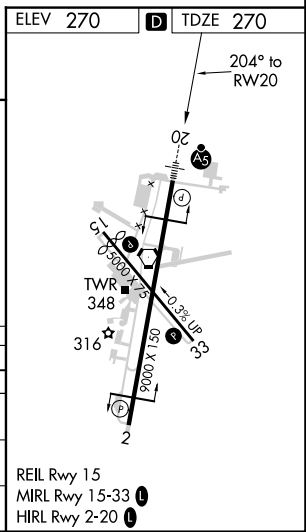
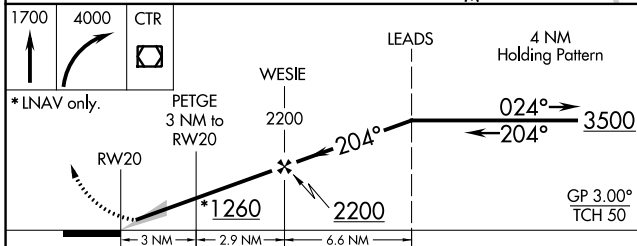
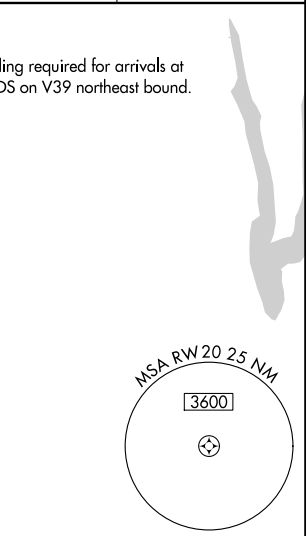
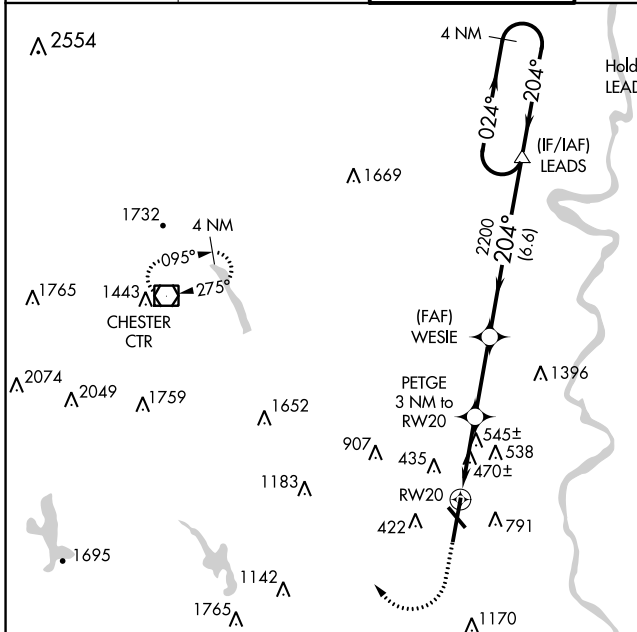
**⚠** Baro-VNAV NA when using Bradley Intl altimeter setting. For uncompensated Baro-VNAV systems, LNAV/VNAV NA below -1.5°C (5°F) or above 54°C (130°F). DME/DME RNP-0.3 NA. When local altimeter setting not received, use Bradley Intl altimeter setting and increase LPV DA to 561; LNAV/VNAV DA to 996 and increase all Cats visibility to 2½; all MDA 60 feet and LNAV Cats B, C, D and E visibility to 1¼. For inoperative MALSR, increase LPV Cat E visibility to RVR 4000, LNAV/VNAV all Cats visibility to 2½, LNAV Cat E visibility to 1½. Night landing: Rwy 15 NA.

**❄** -21°C

**MALSR**

**MISSED APPROACH:**  
Climb to 1700 then climbing right turn to 4000 direct CTR VOR/DME and hold.

|                             |                                       |   |                               |                          |
|-----------------------------|---------------------------------------|---|-------------------------------|--------------------------|
| ATIS<br><b>127.1 263.15</b> | YANKEE APP CON<br><b>125.35 281.5</b> | <b>WESTFIELD TOWER *</b><br><b>118.9 (CTAF) 0 251.1</b> | GND CON<br><b>121.7 289.4</b> | CLNC DEL<br><b>121.7</b> |
|-----------------------------|---------------------------------------|---|-------------------------------|--------------------------|



| CATEGORY          | A       | B            | C                       | D           | E             |
|-------------------|---------|--------------|-------------------------|-------------|---------------|
| LPV DA            |         | 520/24       | 250 (300-½)             |             |               |
| LNAV/VNAV DA      |         | 955-1⅞       | 685 (700-1⅞)            |             |               |
| LNAV MDA          | 800/24  | 530 (600-½)  | 800/55                  | 530 (600-1) |               |
| <b>C</b> CIRCLING | 1160-1¼ | 890 (900-1¼) | 1160-2¾<br>890 (900-2¾) | 1660-3      | 1390 (1400-3) |

NE-1, 01 DEC 2022 to 29 DEC 2022

NE-1, 01 DEC 2022 to 29 DEC 2022

REIL Rwy 15  
MIRL Rwy 15-33  
HIRL Rwy 2-20