

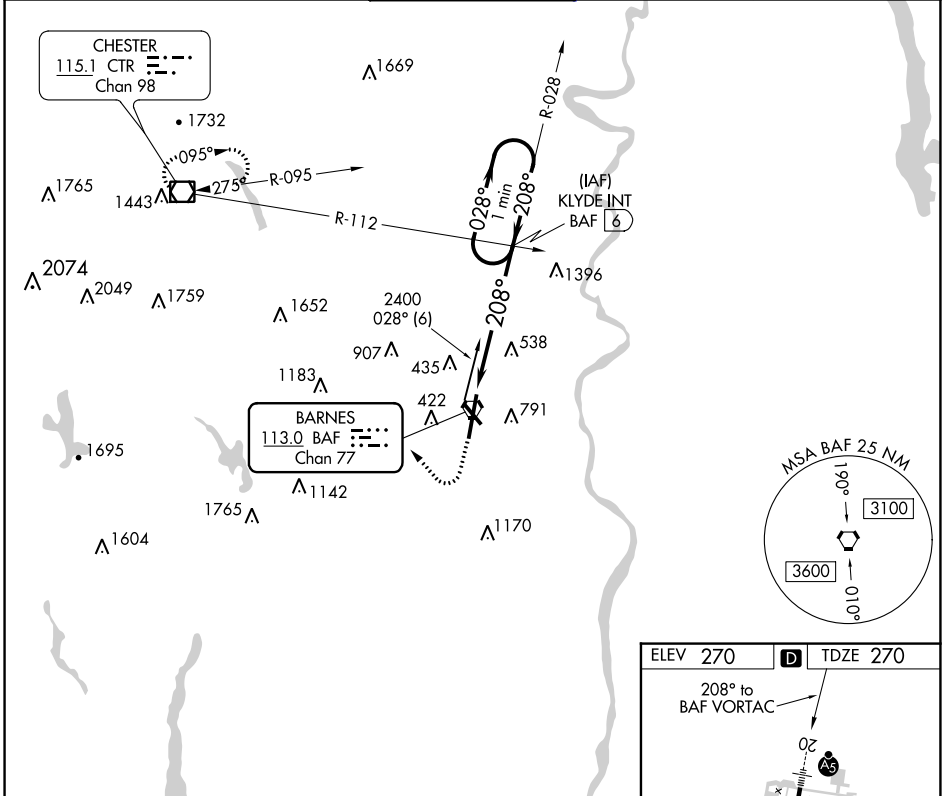
BAF VORTAC 113.0 Chan 77	APP CRS 208°	Rwy Idg 8919 TDZE 270 Apt Elev 270
---------------------------------------	------------------------	---

VOR RWY 20

WESTFIELD-BARNES RGNL (BAF)

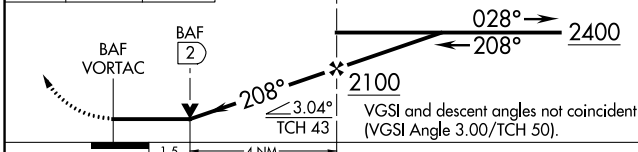
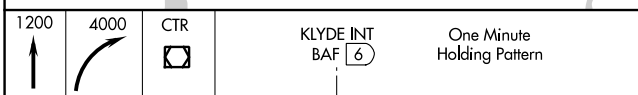
-21°C	For inoperative MALSR, increase Cat A/B visibility to RVR 5000. Night landing: Rwy 15 NA.	MALSR 	MISSED APPROACH: Climb to 1200, then climbing right turn to 4000 direct CTR VOR/DME and hold, continue climb in hold to 4000.

ATIS 127.1 263.15	YANKEE APP CON 125.35 281.5	WESTFIELD TOWER* 118.9 (CTAF) 0 251.1	GND CON 121.7 289.4	CLNC DEL 121.7
-----------------------------	---------------------------------------	---	-------------------------------	--------------------------

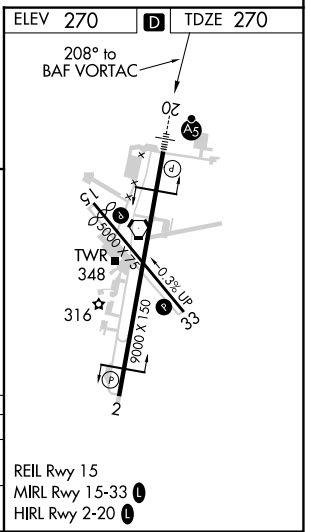


NE-1, 01 DEC 2022 to 29 DEC 2022

NE-1, 01 DEC 2022 to 29 DEC 2022



CATEGORY	A	B	C	D
S-20	940/40	670 (700-¾)	940/60 670 (700-1¼)	940-1½ 670 (700-1½)
CIRCLING	1160-1¼	890 (900-1¼)	1160-2¾ 890 (900-2¾)	1660-3 1390 (1400-3)



REIL Rwy 15
MIRL Rwy 15-33
HIRL Rwy 2-20