

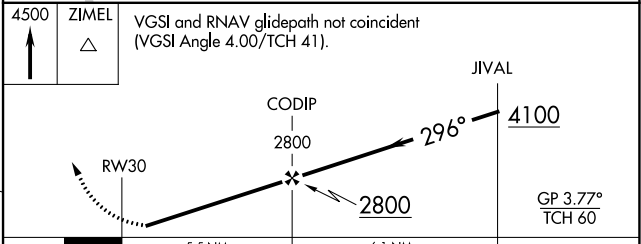
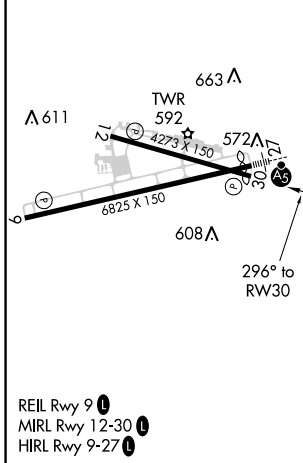
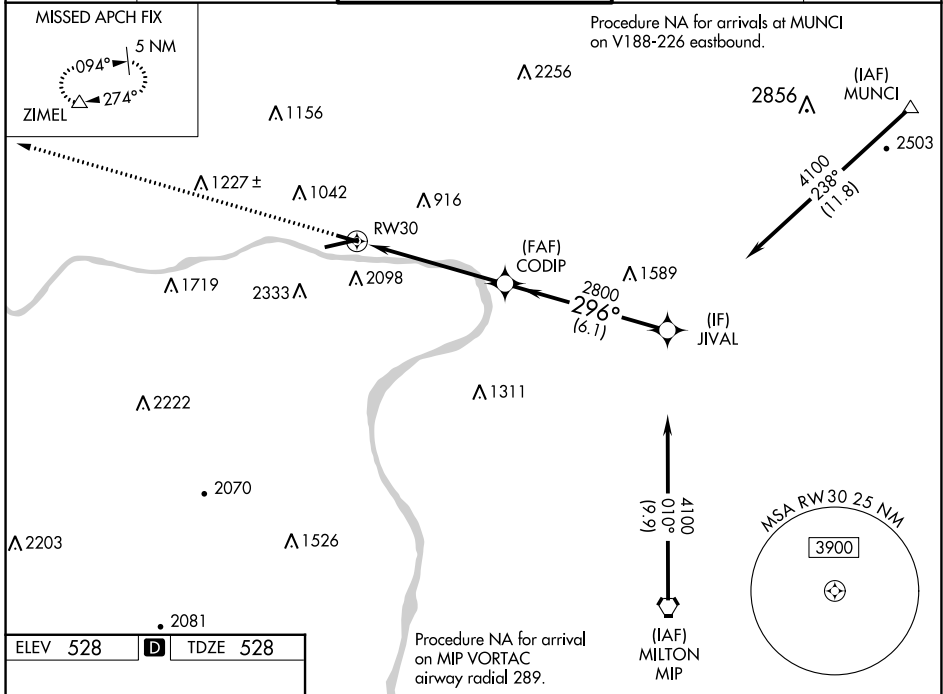
WAAS CH <b>93724</b> <b>W30A</b>	APP CRS <b>296°</b>	Rwy Idg TDZE Apt Elev	<b>4273</b> <b>528</b> <b>528</b>
--	------------------------	-----------------------------	---

# RNAV (GPS) RWY 30

WILLIAMSPORT RGNL (IPT)

    -14°C	DME/DME RNP-0.3 NA. Helicopter visibility reduction below 1 SM NA. Circling NA south of Rwy 9 and southwest of Rwy 30. Night landing: Rwy 12, 30 NA.	MISSED APPROACH: Climb to 4500 direct ZIMEL and hold, continue climb-in-hold to 4500.
-----------------------	--	---

ASOS <b>125.225</b>	NEW YORK CENTER <b>124.9</b>	WILLIAMSPORT TOWER ★ <b>119.1 (CTAF) 257.8</b>	GND CON <b>121.9</b>	UNICOM <b>122.95</b>
------------------------	---------------------------------	---	-------------------------	-------------------------



CATEGORY	A	B	C	D
LPV DA	843-1	315 (400-1)		NA
LNAV/VNAV DA	2212-5	1684 (1700-5)		NA
LNAV MDA	2020-1¼ 1492 (1500-1¼)	2020-1½ 1492 (1500-1½)		NA
CIRCLING	2020-1¼ 1492 (1500-1¼)	2020-1½ 1492 (1500-1½)		NA

NE-4, 01 DEC 2022 to 29 DEC 2022

NE-4, 01 DEC 2022 to 29 DEC 2022