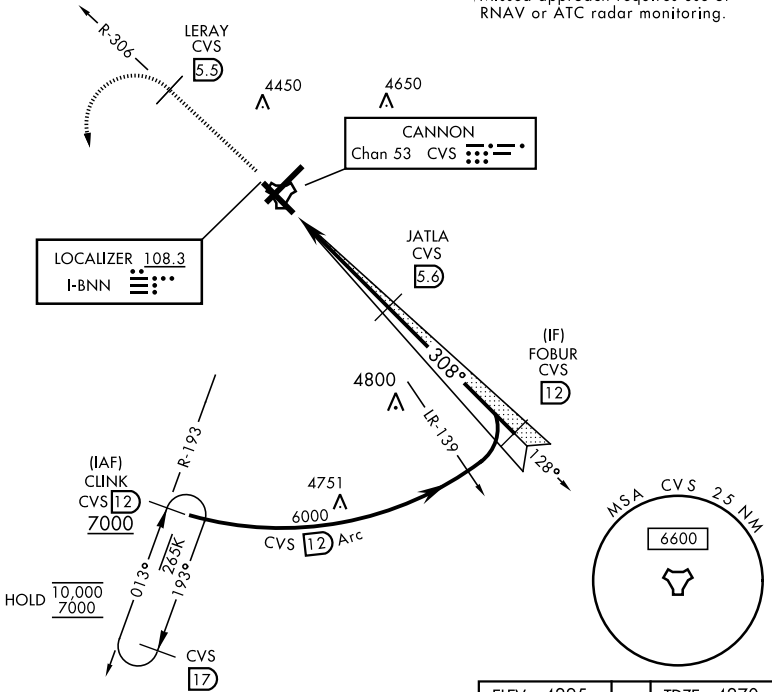


ILS or LOC RWY 31

LOC I-BNN 108.3	APCH CRS 308°	Rwy Idg 8196 TDZE 4270 Arprt Elev 4295	AL-512 [USAF]	CANNON AFB (KCVS)
ATC RADAR or DME required.			SSALR (A3)	† MISSED APPROACH: Climb to 6000 out CVS TACAN R-306 to 5.5 DME (LERAY) then turn left climbing to 7000 intercept CVS R-193 to 12 DME (CLINK) and hold.
* When ALS inop, increase vis to ¼ mile.				
ATIS 119.1 269.9	CANNON APP CON 118.425 352.1	CANNON TOWER 120.4 270.25	GND CON 121.9 275.8	CLNC DEL 120.2 293.225

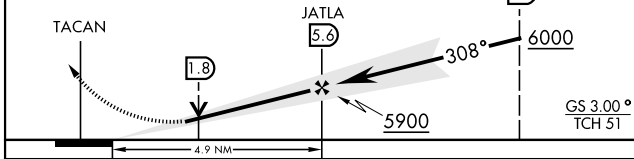
** When ALS inop, increase CAT AB vis to 1 mile, CAT CDE vis to 1 ½ miles.

† Missed approach requires use of RNAV or ATC radar monitoring.

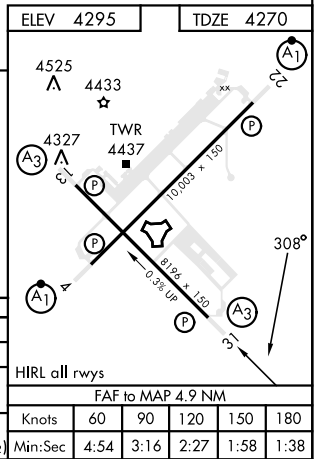


EMERG SAFE ALT 100 NM 9000

6000	LERAY CVS R-306 5.5	7000	CLINK CVS R-193 12	VGSI TCH (41') and the procedure TCH (51') is greater than 3'.
FOBUR 12				



CATEGORY	A	B	C	D	E
S-ILS 31*	4470-½		200	(200-½)	
S-LOC 31**	4660-½ 390 (400-½)		4660-5/8 390 (400-5/8)		
CIRCLING	4840-1 545 (600-1)		4860-1½	5000-2¼	5020-2½ 725 (800-2½)



ILS or LOC RWY 31

SW-1, 01 DEC 2022 to 29 DEC 2022

SW-1, 01 DEC 2022 to 29 DEC 2022