

CLOVIS, NEW MEXICO

# RNAV (GPS) RWY 4

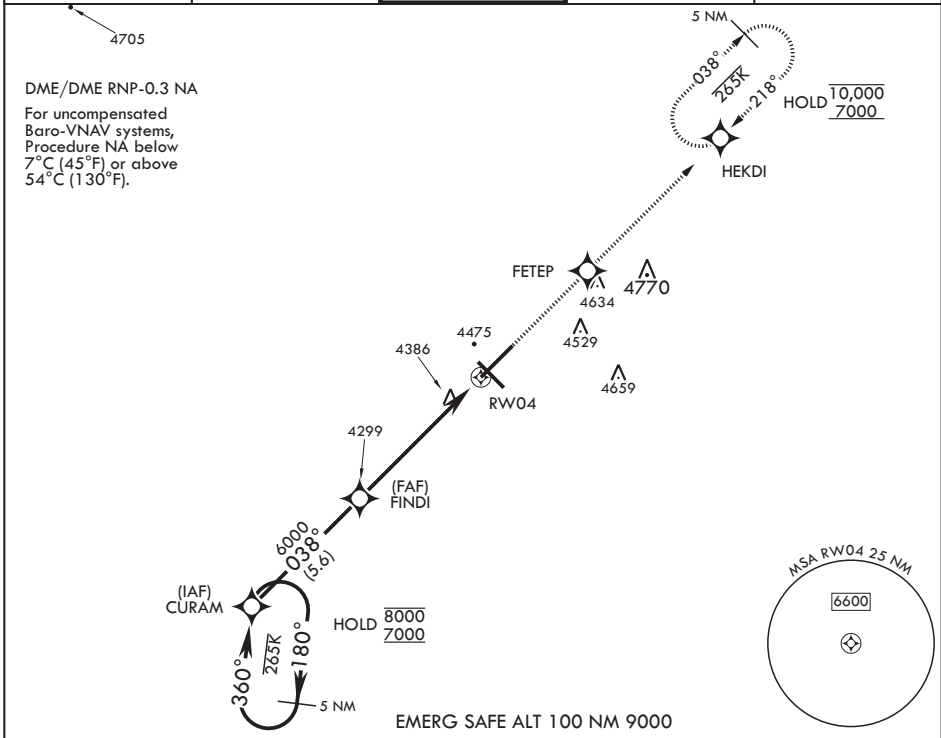
WAAS CH 41172 W04A	APCH CRS 038°	Rwy ldg TDZE Arprt Elev	10,003 4284 4295
--------------------------	------------------	-------------------------------	------------------------

AL-512 (USAF)

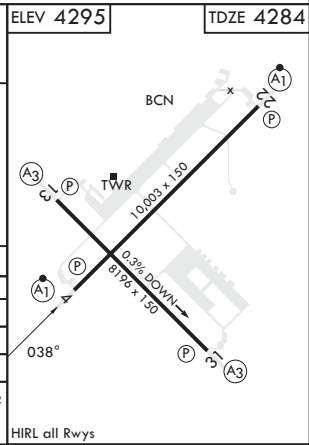
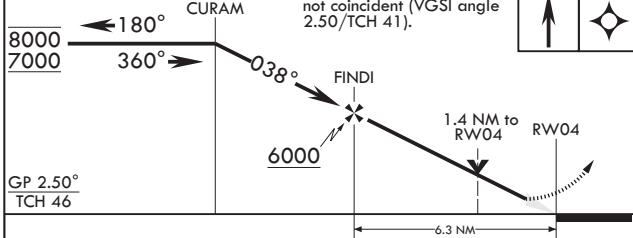
CANNON AFB (KCVS)

**ALSF-1** MISSED APPROACH: Climb to 7000 direct FETEP, then track to HEKDI and hold.

ATIS 119.1 269.9	CANNON APP CON 118.425 352.1	TOWER 120.4 270.25	GND CON 121.9 275.8	CLNC DEL 120.2 293.225
---------------------	---------------------------------	-----------------------	------------------------	---------------------------



5 NM Holding Pattern VGSIs and RNAV glidepath not coincident (VGSIs angle 2.50/TCH 41).



CATEGORY	A	B	C	D	E
LPV DA*	4484/24		200	(200-1/2)	
LNAV/VNAV DA**	4700/40		416	(500-3/4)	
LNAV MDA***	4700/24	416 (500-1/2)	4700/40	416	(500-3/4)
<b>C</b> CIRCLING	4840-1 545 (600-1)		4840-1 1/2 545 (600-1/2)	4980-2 1/4 685 (700-2/4)	5020-2 1/2 725 (800-2/2)

HIRL all Rwy's

CLOVIS, NEW MEXICO  
Amdt 3 07OCT21

34°23'N - 103°19'W

CANNON AFB (KCVS)

# RNAV (GPS) RWY 4

SW-1, 01 DEC 2022 to 29 DEC 2022

SW-1, 01 DEC 2022 to 29 DEC 2022