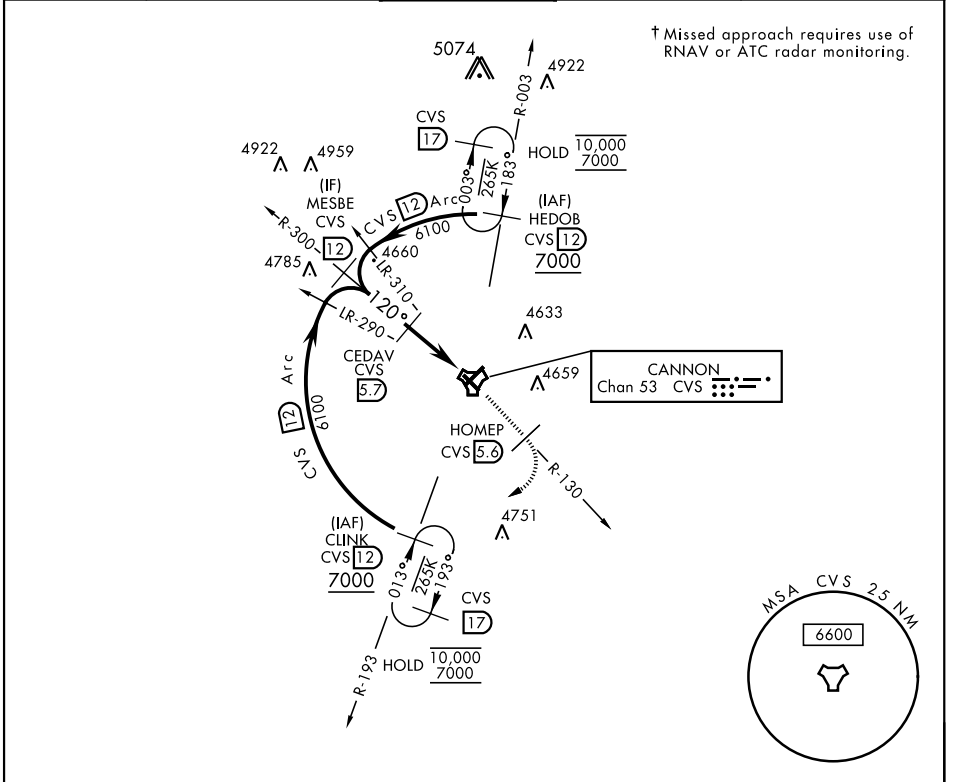


CLOVIS, NEW MEXICO

TACAN RWY 13

| | | | | |
|--|-------------------------|---|---------------|--|
| TACAN CVS Chan 53 | APCH CRS 120° | Rwy Idg 8196 TDZE 4294 Arprt Elev 4295 | AL-512 [USAF] | CANNON AFB (KCVS) |
| ▼ * When ALS inop, increase CAT AB vis to 1 mile, CAT CDE vis to 1½ miles. | | | SSALR | † MISSED APPROACH: Climb to 6000 out CVS TACAN R-130 to 5.6 DME (HOMEP) then turn right climbing to 7000 intercept CVS R-193 to 12 DME (CLINK) and hold. |

| | | | | |
|----------------------------|--|-------------------------------------|-------------------------------|----------------------------------|
| ATIS 119.1 269.9 | CANNON APP CON 118.425 352.1 | CANNON TOWER 120.4 270.25 | GND CON 121.9 275.8 | CLNC DEL 120.2 293.225 |
|----------------------------|--|-------------------------------------|-------------------------------|----------------------------------|



† Missed approach requires use of RNAV or ATC radar monitoring.

CANNON Chan 53 CVS

SW-1, 01 DEC 2022 to 29 DEC 2022

SW-1, 01 DEC 2022 to 29 DEC 2022

EMERG SAFE ALT 100 NM 9000

| | | | |
|---|---|-------------|---|
| | ELEV 4295 | TDZE 4294 | |
| | 6000 CVS R-130 HOMEP CVS R-130 5.6 7000 CLINK CVS R-193 12 | | |
| MESBE R-300 12 6100 120° 6000 3.13° TCH 37 CEDAV 5.7 HASRU 7 TACAN | | | |
| | 5 NM | 0.1 | |
| CATEGORY | A | B | C D E |
| S-13* | 4800-¾ | 506 (600-¾) | 4800-1 506 (600-1) |
| CIRCLING | 4840-1 | 545 (600-1) | 4860-1½ 5000-2¼ 5020-2½ 565 (600-1½) 705 (800-2¼) 725 (800-2½) |
| HIRL all rwys | | | |

CLOVIS, NEW MEXICO 34° 23'N-103° 19'W CANNON AFB (KCVS)

Amdt 2 09NOV17

TACAN RWY 13