

HI-TACAN Z RWY 31

TACAN OFF Chan 54	APCH CRS 316°	Rwy ldg 10,620 TDZE 982 Arprt Elev 1049	AL-544 [USAF]	OFFUTT AFB (KOFF)
-----------------------------	-------------------------	--	---------------	-------------------

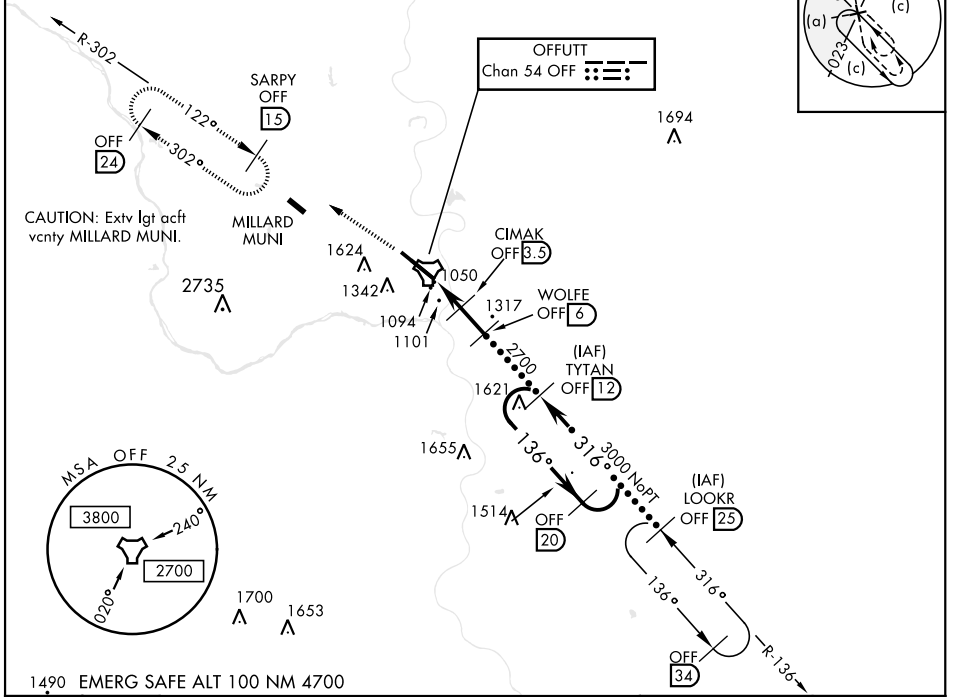
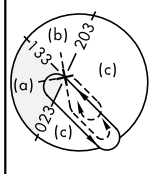
▼ * When ALS inop, increase CAT CDE RVR to 55, vis to 1 mile.
 ** Circling not authorized N of Rwy 13-31.

ALSF-1 

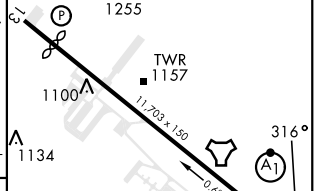
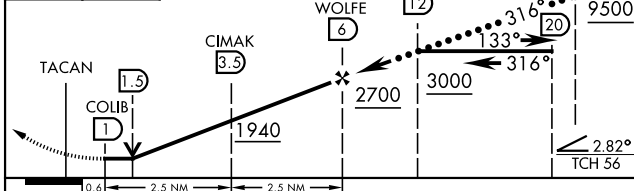
MISSED APPROACH: Climb to 3000 via OFF TACAN R-302 to SARPY and hold.

ATIS 126.025 273.5	OMAHA APP CON 124.5 263.0 (E) 120.1 354.05 (W)	TOWER 123.7 279.625	GND CON 121.7 289.4
------------------------------	--	-------------------------------	-------------------------------

CAUTION: When circling to Rwy 13 at night, operational VGSI required, remain on or above VGSI glidepath until threshold.



3000 OFF R-302	SARPY OFF 15	LOOKR OFF 25	ELEV 1049	TDZE 982
----------------	--------------	--------------	-----------	----------



CATEGORY	C	D	E
S-31*	1360/40	378	(400-¾)
CIRCLING**	1660-1¾ 611 (700-1¾)	1940-3	891 (900-3)

Rwy 13-31 ALS nstd
HIRL Rwy 13-31

HI-TACAN Z RWY 31

NC-2, 01 DEC 2022 to 29 DEC 2022

NC-2, 01 DEC 2022 to 29 DEC 2022