

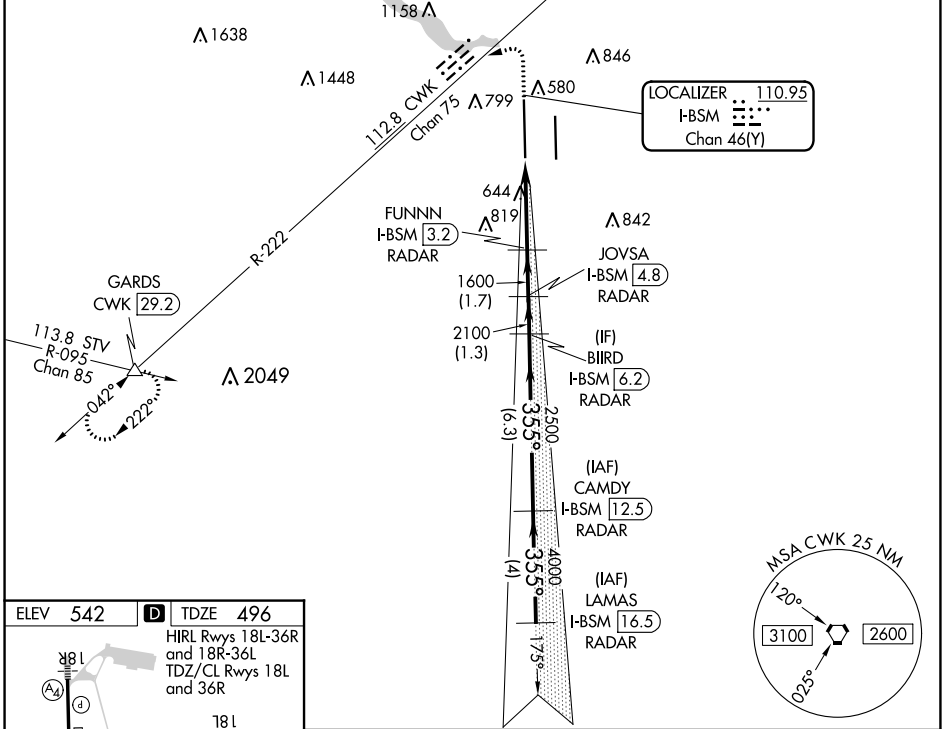
LOC/DME I-BSM 110.95 Chan 46(Y)	APP CRS 355°	Rwy Idg 12250 TDZE 496 Apt Elev 542
---	------------------------	--

ILS or LOC RWY 36L

AUSTIN-BERGSTROM INTL (AUS)

DME or RADAR required.		MALS	MISSED APPROACH: Climb to 1000 then climbing left turn to 3500 on heading 250° and CWK VORTAC R-222 to GARDS INT/CWK 29.2 DME and hold.		
▼ Simultaneous approach authorized. For inop ALS, increase S-LOC 36L Cats C/D/E visibility to RVR 6000. Inop table does not apply to S-ILS 36L all Cats.		(A4)			

D-ATIS 124.4	AUSTIN APP CON 127.225 317.65 120.875 270.25 (SOUTH) 119.0 370.85 (WEST)	AUSTIN TOWER 121.0 281.5	GND CON 121.9 348.6	CLNC DEL 125.5 263.0	CPDLC
------------------------	--	------------------------------------	-------------------------------	--------------------------------	-------



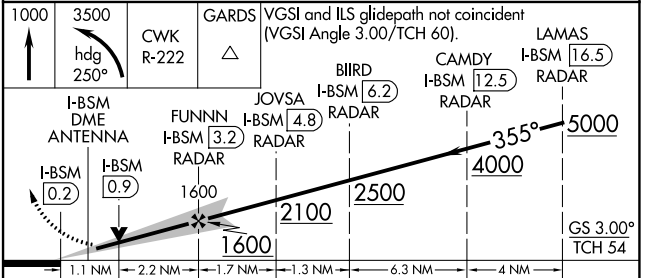
ELEV 542 TDZE 496

HIRL Rwy 18L-36R and 18R-36L
TDZ/CL Rwy 18L and 36R

18R DOWN 0.6%
18L UP 0.3%
TWR 727
680
36L 355° 3.3 NM from FAF
36R

Knots	60	90	120	150	180
Min:Sec	3:18	2:12	1:39	1:19	1:06

FAF to MAP 3.3 NM



CATEGORY	A	B	C	D	E
S-ILS 36L	696/40 200 (200-¾)				
S-LOC 36L	900/40 404 (400-¾)		900/50 404 (400-1)		

SC-3, 01 DEC 2022 to 29 DEC 2022

SC-3, 01 DEC 2022 to 29 DEC 2022