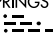
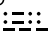


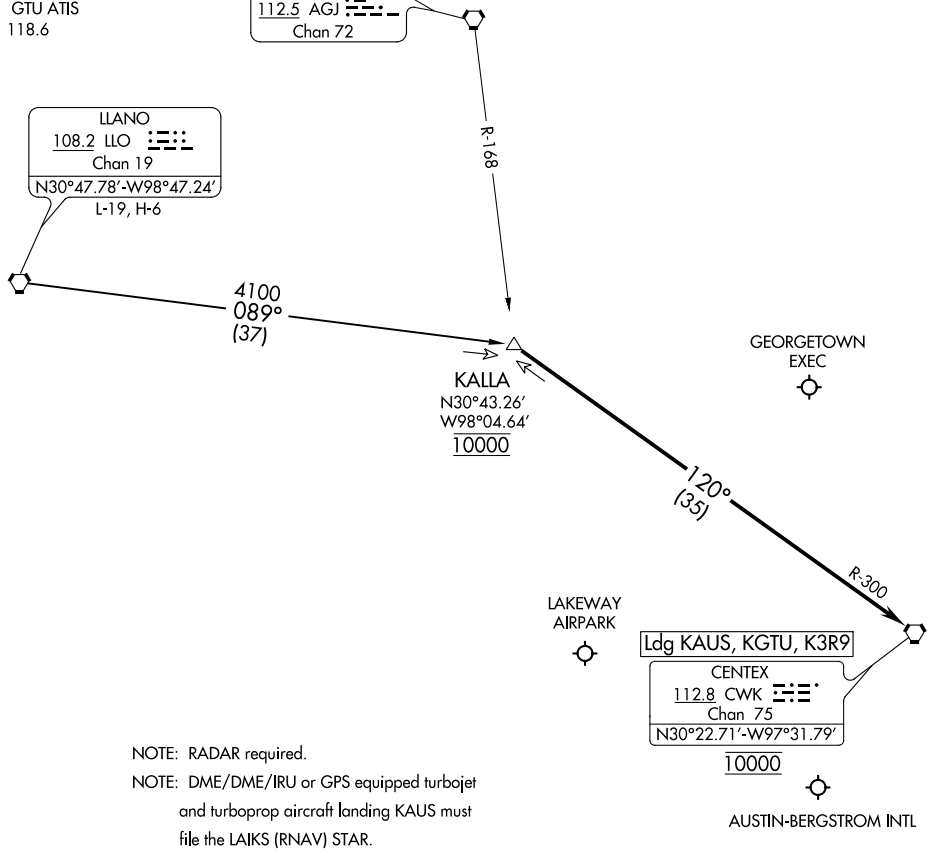
# KALLA FOUR ARRIVAL

AUSTIN, TEXAS

AUSTIN APP CON  
 119.0 370.85  
 AUS D-ATIS  
 124.4  
 GTU ATIS  
 118.6

GOOCH SPRINGS  
 112.5 AGJ   
 Chan 72

LLANO  
 108.2 LLO   
 Chan 19  
 N30°47.78'-W98°47.24'  
 L-19, H-6



NOTE: RADAR required.  
 NOTE: DME/DME/IRU or GPS equipped turbojet and turboprop aircraft landing KAUS must file the LAIKS (RNAV) STAR.

NOTE: Chart not to scale.

## ARRIVAL ROUTE DESCRIPTION

LLANO TRANSITION (LLO.KALLA4): From over LLO VORTAC on LLO R-089 to KALLA. Thence . . . .

. . . . from over KALLA on CWK R-300 to cross CWK VORTAC at 10000. Expect vectors to final approach course.

SC-3, 01 DEC 2022 to 29 DEC 2022

SC-3, 01 DEC 2022 to 29 DEC 2022