

LOC I-GLH 109.1	APP CRS 177°	Rwy Idg TDZE Apt Elev	7981 129 131
---------------------------	------------------------	-----------------------------	---

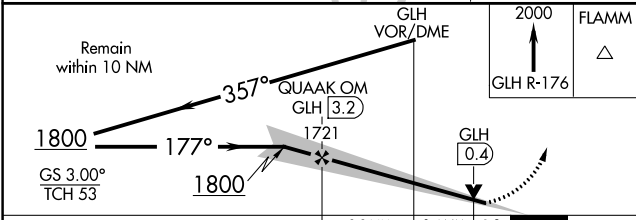
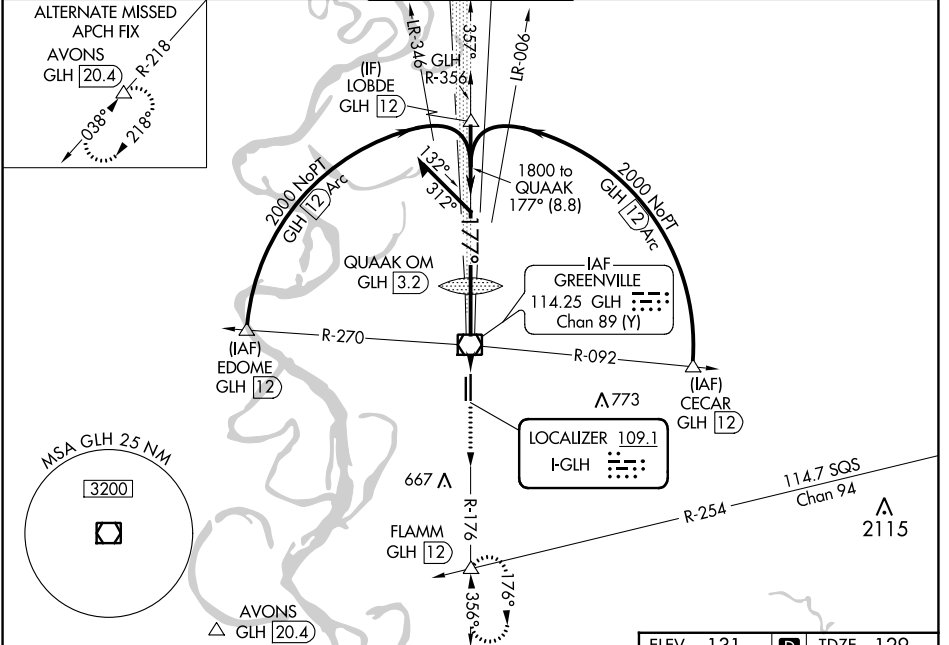
ILS or LOC RWY 18L

GREENVILLE MID-DELTA (GLH)

⚠ When local altimeter setting not received, use Greenwood altimeter setting. For inop ALS when using Greenwood altimeter setting, increase S-ILS 18L all Cats visibility to RVR 4500 and S-LOC 18L Cat C/D visibility to 1/8 SM.

MALSR MISSED APPROACH: Climb to 2000 on GLH VOR/DME R-176 to FLAMM INT/12 DME and hold.

ASOS 125.525	MEMPHIS CENTER 135.875 269.35	GREENVILLE TOWER ★ 119.0 (CTAF) 0 256.9	GND CON 121.8 256.9	UNICOM 122.95
------------------------	---	---	-------------------------------	-------------------------



ELEV 131	D	TDZE 129
----------	----------	----------

177° 4.8 NM from FAF

HIRL Rwy 18L-36R
MIRL Rwy 18R-36L
REIL Rwy 36R

FAF to MAP 4.8 NM					
Knots	60	90	120	150	180
Min:Sec	4:48	3:12	2:24	1:55	1:36

CATEGORY	A	B	C	D
S-ILS 18L		329/24	200 (200-1/2)	
S-LOC 18L	580/24	451 (500-1/2)	580/45	451 (500-7/8)
C CIRCLING	600-1	469 (500-1)	600-1 1/2 469 (500-1 1/2)	800-2 669 (700-2)
GREENWOOD ALTIMETER SETTING MINIMUMS				
S-ILS 18L		438/24	309 (400-1/2)	
S-LOC 18L	700/24	571 (600-1/2)	700-1 1/4	571 (600-1 1/4)
C CIRCLING	720-1	589 (600-1)	720-1 5/8 589 (600-1 5/8)	920-2 1/2 789 (800-2 1/2)

SC-4, 01 DEC 2022 to 29 DEC 2022

SC-4, 01 DEC 2022 to 29 DEC 2022