

WAAS CH 81911 W36B	APP CRS 357°	Rwy Idg 8001 TDZE 129 Apt Elev 131
--	------------------------	---

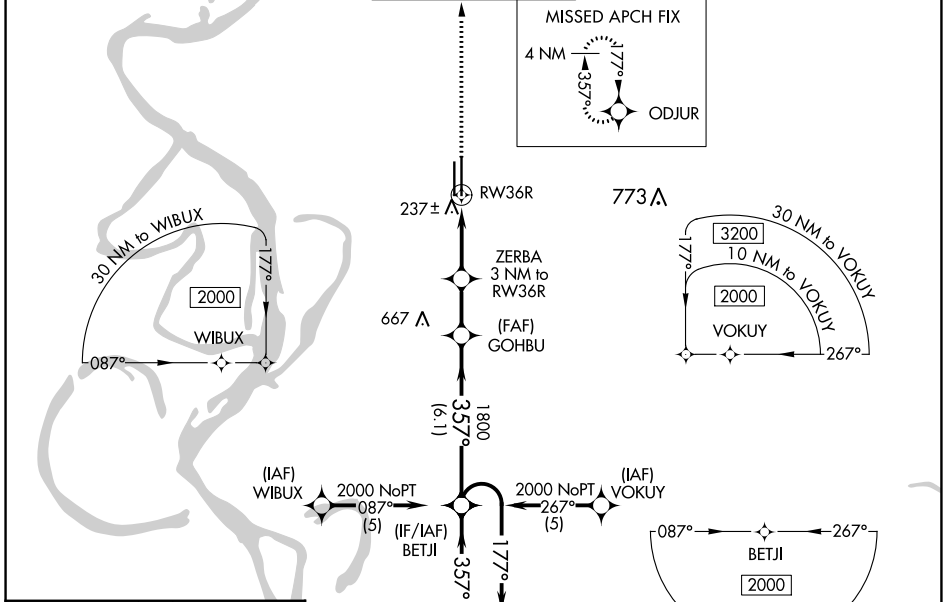
RNAV (GPS) RWY 36R

GREENVILLE MID-DELTA (GLH)

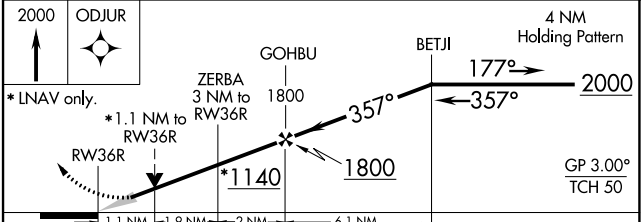
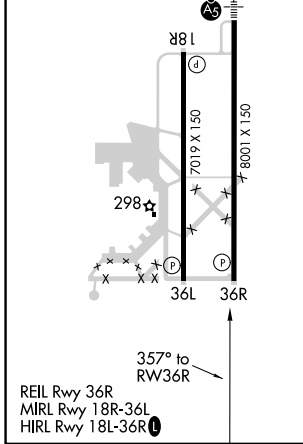
⚠ For uncompensated Baro-VNAV systems, LNAV/VNAV NA below -15°C (5°F) or above 54°C (130°F).
⚠ DME/DME RNP-0.3 NA. When local altimeter setting not received, use Greenwood altimeter setting:
 increase LPV DA to 487 feet and all Cats visibility ¼ SM; increase LNAV/VNAV DA to 620 feet and all
 Cats visibility ½ SM; increase all MDA 120 feet and LNAV Cats C/D visibility ¼ SM and Circling
 Cat D visibility ½ SM. VDP and Baro-VNAV NA when using Greenwood altimeter setting.

MISSED APPROACH:
 Climb to 2000 direct
 ODJUR and hold.

ASOS 125.525	MEMPHIS CENTER 135.875 269.35	GREENVILLE TOWER ★ 119.0 (CTAF) 0 256.9	GND CON 121.8 256.9	UNICOM 122.95
------------------------	---	---	-------------------------------	-------------------------



ELEV 131	D	TDZE 129
-----------------	----------	-----------------



CATEGORY	A	B	C	D
LPV DA		379-1	250 (300-1)	
LNAV/VNAV DA		512-1¼	383 (400-1¼)	
LNAV MDA	540-1	411 (500-1)	540-1¼	411 (500-1¼)
CIRCLING	600-1	469 (500-1)	600-1½	800-2 669 (700-2)

SC-4, 01 DEC 2022 to 29 DEC 2022

SC-4, 01 DEC 2022 to 29 DEC 2022