

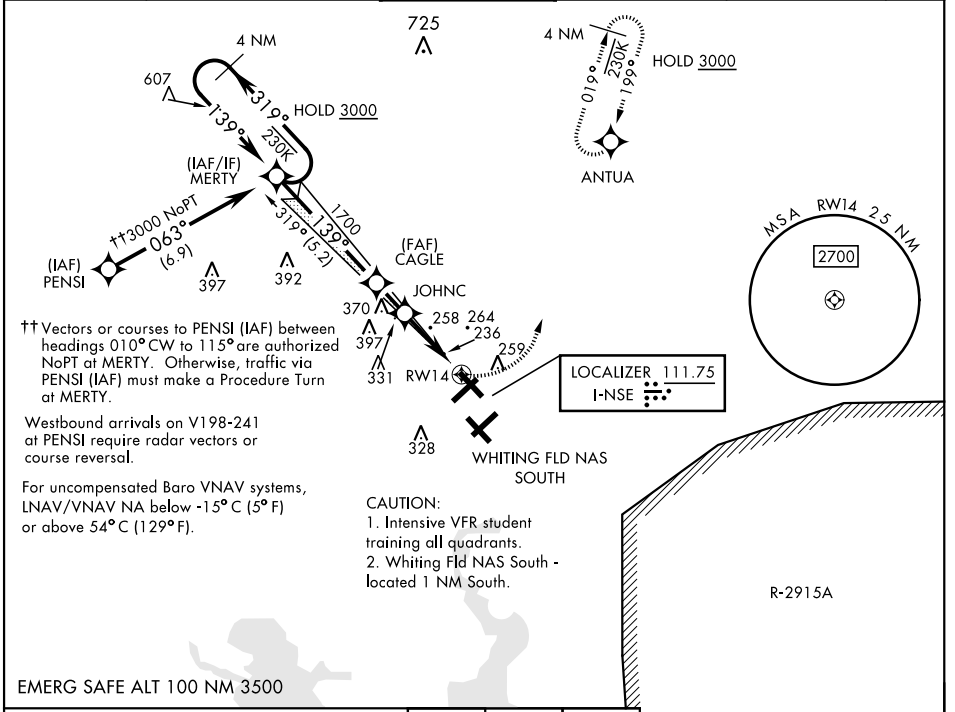
MILTON, FLORIDA

ILS Z or RNAV (GPS) RWY 14

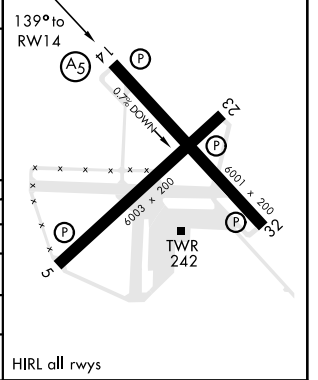
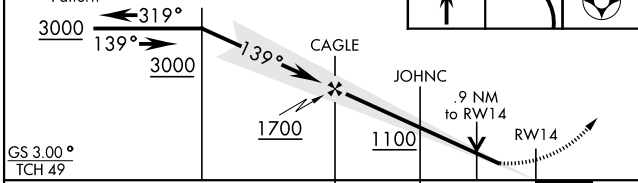
LOC I-NSE 111.75	APCH CRS 139°	Rwy Idg TDZE Arprt Elev 6001 199 199	AL-602 [USN]	WHITING FLD NAS - NORTH (KNSE)
----------------------------	-------------------------	--	--------------	--------------------------------

RNAV1 - GPS for ILS. RNP APCH for LNAV/VNAV, LNAV.	MALSRS (A5)	MISSED APPROACH: Climb to 700, then climbing left turn to 3000 direct to ANTUA and hold. Continue climb in hold. Contact Pensacola APP CON.
---	----------------	---

ATIS ★ 290.325	PENSACOLA APP CON 127.35 278.8	NORTH WHITING TOWER ★ 121.4 306.925	GND CON 251.15	CLNC DEL 257.775	ASR
--------------------------	--	---	--------------------------	----------------------------	-----



4 NM Holding Pattern	700	3000	ANTUA	ELEV 199	TDZE 199
----------------------	-----	------	-------	----------	----------



CATEGORY	A	B	C	D
S-ILS 14 *	399-½	200	(200-½)	
LNAV/VNAV DA *	449-½	250	(300-½)	
LNAV MDA **	520-½	321	(400-½)	
CIRCLING ***	560-1 361 (400-1)	660-1 461 (500-1)	660-1½ 461 (500-1½)	760-2 561 (600-2)

MILTON, FLORIDA 30°43'N-87°01'W WHITING FLD NAS - NORTH (KNSE)

Amtd 4 12AUG21

ILS Z or RNAV (GPS) RWY 14

SE-3, 01 DEC 2022 to 29 DEC 2022

SE-3, 01 DEC 2022 to 29 DEC 2022