

# TACAN RWY 14

TACAN NSE Chan <b>70</b>	APCH CRS <b>127°</b>	Rwy Ldg TDZE Arprt Elev	<b>6001</b> <b>199</b> <b>199</b>
-----------------------------	-------------------------	-------------------------------	---

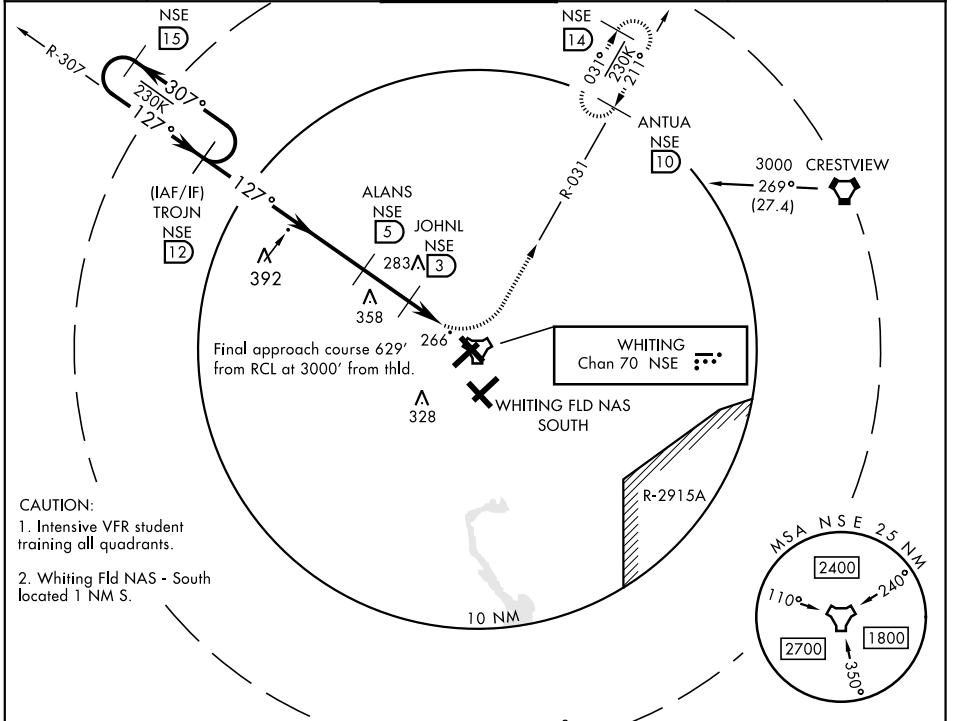
AL-602 [USN]

WHITING FLD NAS - NORTH (KNSE)

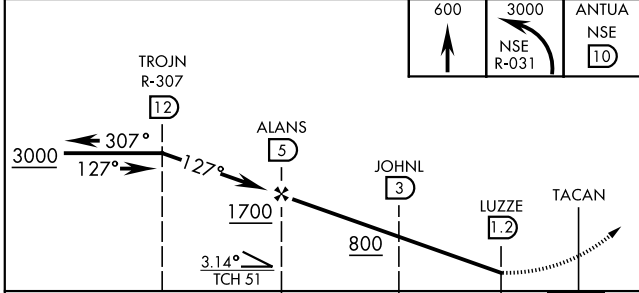
▼ \* Circling not authorized in sector SE of Rwy 5-23 and SW of Rwy 14-32.

MALSR (A5) MISSED APPROACH: Climb to 600, then climbing left turn to 3000, intercept NSE TACAN R-031 to ANTUA and hold. Continue climb in hold. Contact Pensacola APP CON.

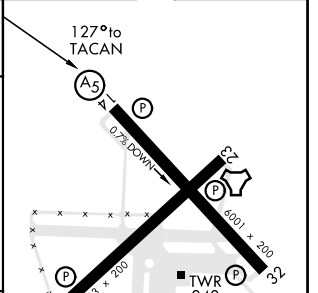
ATIS ★ <b>290.325</b>	PENSACOLA APP CON <b>127.35 278.8</b>	NORTH WHITING TOWER ★ <b>121.4 306.925</b>	GND CON <b>251.15</b>	CLNC DEL <b>257.775</b>	ASR
--------------------------	--	--	--------------------------	----------------------------	-----



EMERG SAFE ALT 100 NM 3500 ENROUTE FACILITIES



ELEV 199	TDZE 199
----------	----------



CATEGORY	A	B	C	D
S-14		520 - 1	321 (400 - 1)	
CIRCLING*	600-1 401 (500-1)	660-1 461 (500-1)	660-1½ 461 (500-1½)	760-2 561 (600-2)

HIRL all Rwy

# TACAN RWY 14

SE-3, 01 DEC 2022 TO 29 DEC 2022

SE-3, 01 DEC 2022 TO 29 DEC 2022