

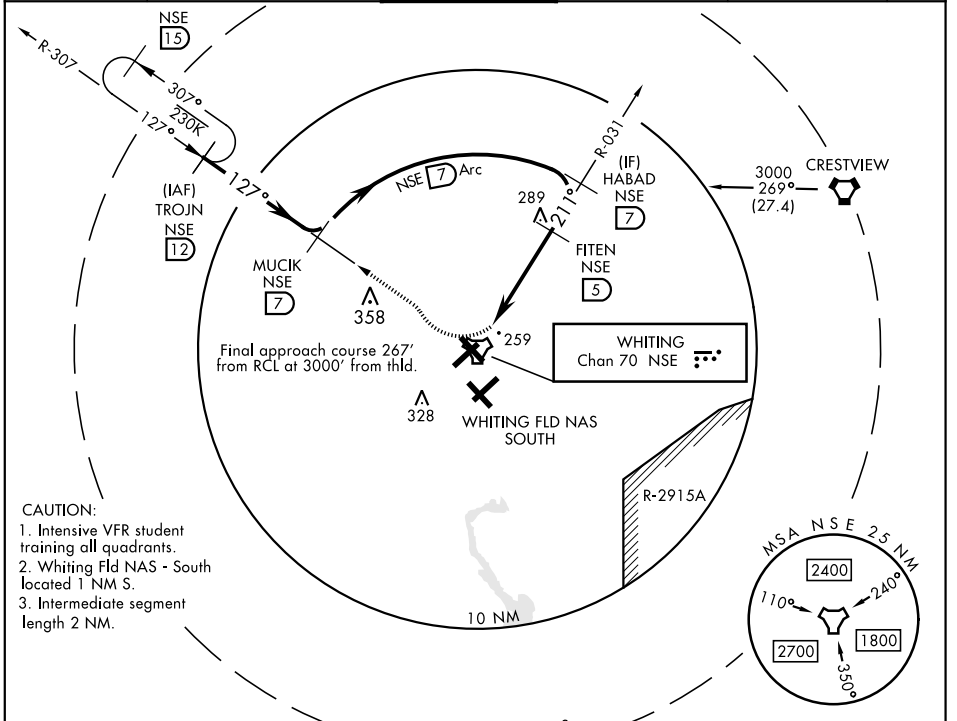
# TACAN RWY 23

TACAN NSE Chan <b>70</b>	APCH CRS <b>211°</b>	Rwy Ldg TDZE Arprt Elev <b>6003</b> <b>183</b> <b>199</b>	AL-602 [USN]	WHITING FLD NAS - NORTH (KNSE)
-----------------------------	-------------------------	--	--------------	--------------------------------

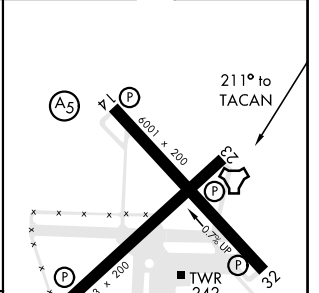
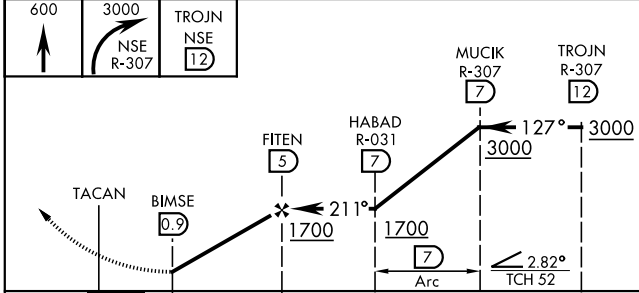
**⚠** \* Circling not authorized in sector SE of Rwy 5-23 and SW of Rwy 14-32.

**MISSED APPROACH:** Climb to 600. Then climbing right turn to 3000. Intercept NSE TACAN R-307 to TROJN and hold. Continue climb in hold. Contact Pensacola APP CON.

ATIS ★ <b>290.325</b>	PENSACOLA APP CON <b>127.35 278.8</b>	NORTH WHITING TOWER ★ <b>121.4 306.925</b>	GND CON <b>251.15</b>	CLNC DEL <b>257.775</b>	ASR
--------------------------	--	--	--------------------------	----------------------------	-----



EMERG SAFE ALT 100 NM 3500	ENROUTE FACILITIES	ELEV 199	TDZE 183
----------------------------	--------------------	----------	----------



CATEGORY	A	B	C	D
S-23	540-1		357	(400-1)
<b>C</b> CIRCLING*	600-1 401 (500-1)	660-1 461 (500-1)	660-1½ 461 (500-1½)	760-2 561 (600-2)

HIRL all Rwy

SE-3, 01 DEC 2022 to 29 DEC 2022

SE-3, 01 DEC 2022 to 29 DEC 2022